

Datasheet for ABIN7429709  
**anti-CRP antibody (AA 20-225)**[Go to Product page](#)

## 2 Images

## Overview

Quantity:	100 µL
Target:	CRP
Binding Specificity:	AA 20-225
Reactivity:	Guinea Pig
Host:	Rabbit
Clonality:	Polyclonal
Conjugate:	This CRP antibody is un-conjugated
Application:	Western Blotting (WB), Immunohistochemistry (IHC), Immunoprecipitation (IP), Immunocytochemistry (ICC)

## Product Details

Purpose:	Polyclonal Antibody to C Reactive Protein (CRP)
Immunogen:	Recombinant C Reactive Protein (CRP) corresponding to Gly20~Pro225 with Two N-terminal Tags, His-tag and SUMO-tag
Isotype:	IgG
Specificity:	The antibody is a rabbit polyclonal antibody raised against CRP. It has been selected for its ability to recognize CRP in immunohistochemical staining and western blotting.
Cross-Reactivity:	Rat
Purification:	Antigen-specific affinity chromatography followed by Protein A affinity chromatography

## Target Details

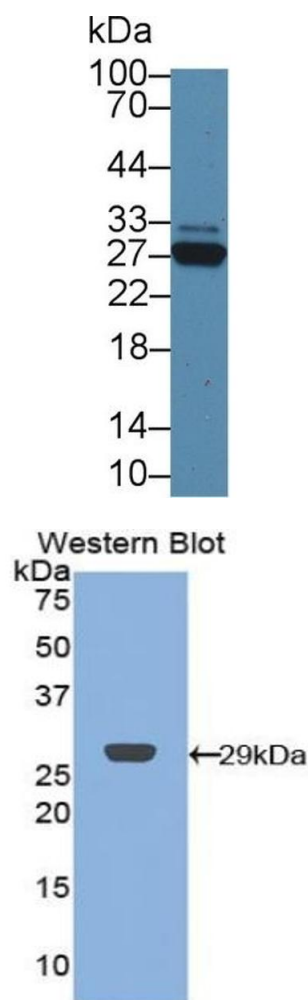
Target:	CRP
Alternative Name:	C Reactive Protein ( <a href="#">CRP Products</a> )
Background:	C-RP, PTX1, Pentraxin-Related, Pentraxin 1
Pathways:	<a href="#">Carbohydrate Homeostasis</a>

## Application Details

Application Notes:	Western blotting: 0.5-2 µg/mL 1:500-2000 Immunohistochemistry: 5-20 µg/mL 1:50-200 Immunocytochemistry: 5-20 µg/mL 1:50-200 Optimal working dilutions must be determined by end user.
Comment:	The thermal stability is described by the loss rate. The loss rate was determined by accelerated thermal degradation test, that is, incubate the protein at 37°C for 48h, and no obvious degradation and precipitation were observed. The loss rate is less than 5% within the expiration date under appropriate storage condition.
Restrictions:	For Research Use only

## Handling

Format:	Liquid
Buffer:	PBS, pH 7.4, containing 0.02 % Sodium azide, 50 % glycerol.
Preservative:	Sodium azide
Precaution of Use:	This product contains Sodium azide: a POISONOUS AND HAZARDOUS SUBSTANCE which should be handled by trained staff only.
Storage:	4 °C, -20 °C
Storage Comment:	Store at 4°C for frequent use. Stored at -20°C in a manual defrost freezer for two year without detectable loss of activity. Avoid repeated freeze-thaw cycles.
Expiry Date:	24 months



Western Blotting

**Image 1.** Detection of CRP in Rat Serum using Polyclonal Antibody to C Reactive Protein (CRP)

Western Blotting

**Image 2.** Detection of Recombinant CRP,Cavia using Polyclonal Antibody to C Reactive Protein (CRP)