

Datasheet for ABIN7429727  
**anti-Endothelin 1 antibody (AA 53-90)**[Go to Product page](#)

## 3 Images

## Overview

Quantity:	100 µL
Target:	Endothelin 1 (EDN1)
Binding Specificity:	AA 53-90
Reactivity:	Human
Host:	Rabbit
Clonality:	Polyclonal
Conjugate:	This Endothelin 1 antibody is un-conjugated
Application:	Western Blotting (WB), Immunohistochemistry (IHC), Immunoprecipitation (IP), Immunocytochemistry (ICC)

## Product Details

Purpose:	Polyclonal Antibody to Endothelin 1 (EDN1)
Immunogen:	Recombinant Endothelin 1 (EDN1) corresponding to Cys53~Ser90 with N-terminal His Tag
Isotype:	IgG
Specificity:	The antibody is a rabbit polyclonal antibody raised against EDN1. It has been selected for its ability to recognize EDN1 in immunohistochemical staining and western blotting.
Purification:	Antigen-specific affinity chromatography followed by Protein A affinity chromatography

## Target Details

Target:	Endothelin 1 (EDN1)
---------	---------------------

## Target Details

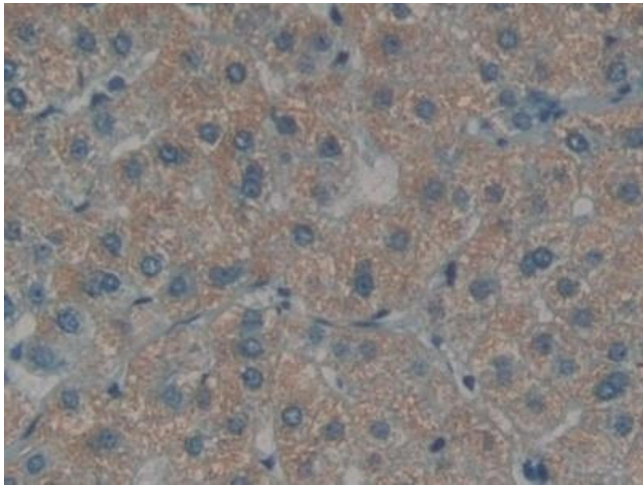
Alternative Name:	Endothelin 1 ( <a href="#">EDN1 Products</a> )
Background:	ET1, PPET1, Preproendothelin-1, Big endothelin-1
Pathways:	<a href="#">Hormone Transport</a> , <a href="#">Negative Regulation of Hormone Secretion</a> , <a href="#">Regulation of Systemic Arterial Blood Pressure by Hormones</a> , <a href="#">cAMP Metabolic Process</a> , <a href="#">Regulation of Muscle Cell Differentiation</a> , <a href="#">Regulation of G-Protein Coupled Receptor Protein Signaling</a> , <a href="#">Regulation of Cell Size</a>

## Application Details

Application Notes:	Western blotting: 1-5 µg/mL Immunocytochemistry in formalin fixed cells: 5-20 µg/mL Immunohistochemistry in formalin fixed frozen section: 5-20 µg/mL Immunohistochemistry in paraffin section: 5-20 µg/mL Enzyme-linked Immunosorbent Assay: 0.05-2 µg/mL Optimal working dilutions must be determined by end user.
Comment:	The thermal stability is described by the loss rate. The loss rate was determined by accelerated thermal degradation test, that is, incubate the protein at 37°C for 48h, and no obvious degradation and precipitation were observed. The loss rate is less than 5% within the expiration date under appropriate storage condition.
Restrictions:	For Research Use only

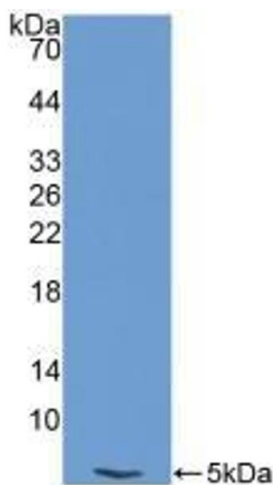
## Handling

Format:	Liquid
Buffer:	0.01M PBS, pH 7.4, containing 0.05 % Proclin-300, 50 % glycerol.
Preservative:	ProClin
Precaution of Use:	This product contains ProClin: a POISONOUS AND HAZARDOUS SUBSTANCE which should be handled by trained staff only.
Storage:	4 °C,-20 °C
Storage Comment:	Store at 4°C for frequent use. Stored at -20°C in a manual defrost freezer for two year without detectable loss of activity. Avoid repeated freeze-thaw cycles.
Expiry Date:	24 months



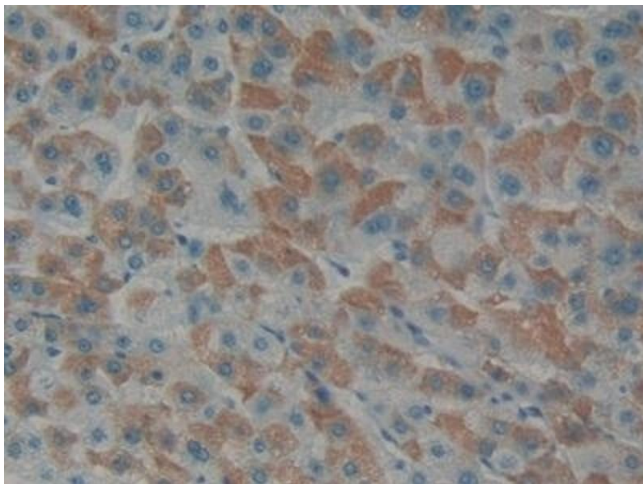
**Immunohistochemistry**

**Image 1.** Detection of EDN1 in Human Liver Tissue using Polyclonal Antibody to Endothelin 1 (EDN1)



**Western Blotting**

**Image 2.** Detection of Recombinant EDN1, Human using Polyclonal Antibody to Endothelin 1 (EDN1)



**Immunohistochemistry**

**Image 3.** Detection of EDN1 in Human Liver cancer Tissue using Polyclonal Antibody to Endothelin 1 (EDN1)