

Datasheet for ABIN7429730

anti-Endothelin 1 antibody (AA 33-202)**6** Images[Go to Product page](#)

Overview

Quantity:	100 µL
Target:	Endothelin 1 (EDN1)
Binding Specificity:	AA 33-202
Reactivity:	Mouse
Host:	Rabbit
Clonality:	Polyclonal
Conjugate:	This Endothelin 1 antibody is un-conjugated
Application:	Western Blotting (WB), Immunohistochemistry (IHC), Immunoprecipitation (IP), Immunocytochemistry (ICC)

Product Details

Purpose:	Polyclonal Antibody to Endothelin 1 (EDN1)
Immunogen:	Recombinant Endothelin 1 (EDN1) corresponding to Glu33~His202 with N-terminal His Tag
Isotype:	IgG
Specificity:	The antibody is a rabbit polyclonal antibody raised against EDN1. It has been selected for its ability to recognize EDN1 in immunohistochemical staining and western blotting.
Purification:	Antigen-specific affinity chromatography followed by Protein A affinity chromatography

Target Details

Target:	Endothelin 1 (EDN1)
---------	---------------------

Target Details

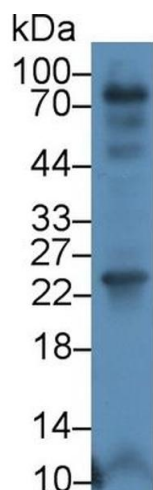
Alternative Name:	Endothelin 1 (EDN1 Products)
Background:	ET1, PPET1, Preproendothelin-1, Big endothelin-1
Pathways:	Hormone Transport , Negative Regulation of Hormone Secretion , Regulation of Systemic Arterial Blood Pressure by Hormones , cAMP Metabolic Process , Regulation of Muscle Cell Differentiation , Regulation of G-Protein Coupled Receptor Protein Signaling , Regulation of Cell Size

Application Details

Application Notes:	Western blotting: 0.5-2 µg/mL 1:220-900 Immunohistochemistry: 5-20 µg/mL 1:22-90 Immunocytochemistry: 5-20 µg/mL 1:22-90 Optimal working dilutions must be determined by end user.
Comment:	The thermal stability is described by the loss rate. The loss rate was determined by accelerated thermal degradation test, that is, incubate the protein at 37°C for 48h, and no obvious degradation and precipitation were observed. The loss rate is less than 5% within the expiration date under appropriate storage condition.
Restrictions:	For Research Use only

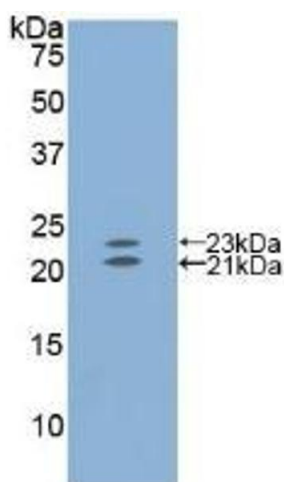
Handling

Format:	Liquid
Buffer:	0.01M PBS, pH 7.4, containing 0.05 % Proclin-300, 50 % glycerol.
Preservative:	ProClin
Precaution of Use:	This product contains ProClin: a POISONOUS AND HAZARDOUS SUBSTANCE which should be handled by trained staff only.
Storage:	4 °C,-20 °C
Storage Comment:	Store at 4°C for frequent use. Stored at -20°C in a manual defrost freezer for two year without detectable loss of activity. Avoid repeated freeze-thaw cycles.
Expiry Date:	24 months



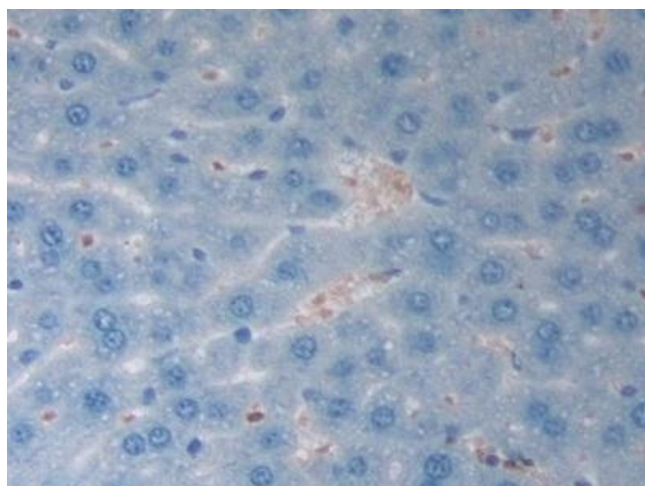
Western Blotting

Image 1. Detection of EDN1 in Mouse Colon lysate using Polyclonal Antibody to Endothelin 1 (EDN1)



Western Blotting

Image 2. Detection of Recombinant EDN1, Mouse using Polyclonal Antibody to Endothelin 1 (EDN1)



Immunohistochemistry

Image 3. Detection of EDN1 in Mouse Liver Tissue using Polyclonal Antibody to Endothelin 1 (EDN1)

Please check the [product details page](#) for more images. Overall 6 images are available for ABIN7429730.