

Datasheet for ABIN7429760
anti-GIP antibody (AA 22-153)

3 Images

[Go to Product page](#)

Overview

Quantity:	100 µL
Target:	GIP
Binding Specificity:	AA 22-153
Reactivity:	Human
Host:	Rabbit
Clonality:	Polyclonal
Conjugate:	This GIP antibody is un-conjugated
Application:	Immunohistochemistry (IHC), Western Blotting (WB), Immunoprecipitation (IP), Immunocytochemistry (ICC)

Product Details

Purpose:	Polyclonal Antibody to Gastric Inhibitory Polypeptide (GIP)
Immunogen:	Recombinant Gastric Inhibitory Polypeptide (GIP) corresponding to Glu22~Arg153 with N-terminal His Tag
Isotype:	IgG
Specificity:	The antibody is a rabbit polyclonal antibody raised against GIP. It has been selected for its ability to recognize GIP in immunohistochemical staining and western blotting.
Cross-Reactivity:	Pig
Purification:	Antigen-specific affinity chromatography followed by Protein A affinity chromatography

Target Details

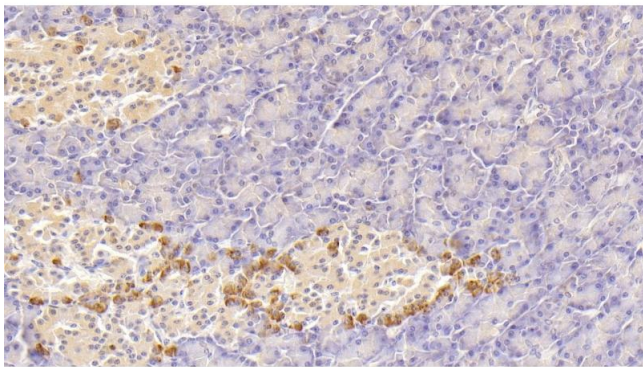
Target:	GIP
Alternative Name:	Gastric Inhibitory Polypeptide (GIP Products)
Background:	Incretin hormone, Glucose Dependent Insulinotropic Peptide
Pathways:	Positive Regulation of Peptide Hormone Secretion , Peptide Hormone Metabolism , Hormone Activity , Regulation of Lipid Metabolism by PPARalpha , Lipid Metabolism

Application Details

Application Notes:	Western blotting: 0.5-2 µg/mL Immunocytochemistry in formalin fixed cells: 5-20 µg/mL Immunohistochemistry in formalin fixed frozen section: 5-20 µg/mL Immunohistochemistry in paraffin section: 5-20 µg/mL Enzyme-linked Immunosorbent Assay: 0.05-2 µg/mL Optimal working dilutions must be determined by end user.
Comment:	The thermal stability is described by the loss rate. The loss rate was determined by accelerated thermal degradation test, that is, incubate the protein at 37°C for 48h, and no obvious degradation and precipitation were observed. The loss rate is less than 5% within the expiration date under appropriate storage condition.
Restrictions:	For Research Use only

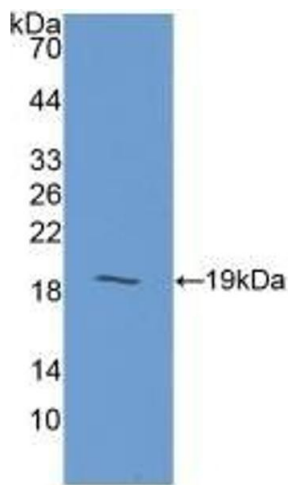
Handling

Format:	Liquid
Buffer:	PBS, pH 7.4, containing 0.01 % SKL, 1 mM DTT, 5 % Trehalose and Proclin300.
Preservative:	Dithiothreitol (DTT), ProClin
Precaution of Use:	This product contains ProClin and Dithiothreitol (DTT): POISONOUS AND HAZARDOUS SUBSTANCES which should be handled by trained staff only.
Storage:	4 °C,-20 °C
Storage Comment:	Store at 4°C for frequent use. Stored at -20°C in a manual defrost freezer for two year without detectable loss of activity. Avoid repeated freeze-thaw cycles.
Expiry Date:	24 months



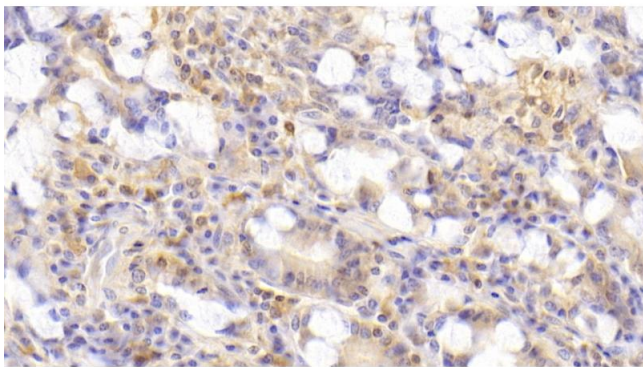
Immunohistochemistry

Image 1. Detection of GIP in Human Pancreas Tissue using Polyclonal Antibody to Gastric Inhibitory Polypeptide (GIP)



Western Blotting

Image 2. Detection of Recombinant GIP, Human using Polyclonal Antibody to Gastric Inhibitory Polypeptide (GIP)



Immunohistochemistry

Image 3. Detection of GIP in Human Small intestine Tissue using Polyclonal Antibody to Gastric Inhibitory Polypeptide (GIP)