



[Go to Product page](#)

Datasheet for ABIN7429769

anti-Growth Hormone 1 antibody (AA 27-216)

2 Images

Overview

Quantity:	100 µL
Target:	Growth Hormone 1 (GH1)
Binding Specificity:	AA 27-216
Reactivity:	Dog
Host:	Rabbit
Clonality:	Polyclonal
Conjugate:	This Growth Hormone 1 antibody is un-conjugated
Application:	Immunohistochemistry (IHC), Western Blotting (WB), Immunoprecipitation (IP), Immunocytochemistry (ICC)

Product Details

Purpose:	Polyclonal Antibody to Growth Hormone (GH)
Immunogen:	Recombinant Growth Hormone (GH) corresponding to Phe27~Phe216
Isotype:	IgG
Specificity:	The antibody is a rabbit polyclonal antibody raised against GH. It has been selected for its ability to recognize GH in immunohistochemical staining and western blotting.
Cross-Reactivity:	Mouse, Rat
Purification:	Antigen-specific affinity chromatography followed by Protein A affinity chromatography

Target Details

Target:	Growth Hormone 1 (GH1)
Alternative Name:	Growth Hormone (GH1 Products)
Background:	GH1, GH-N, GHN, hGH-N, Somatotropin, Hygetropin, Jintropin, Kigtropin, Pituitary Growth Hormone, Growth Hormone, Normal
Pathways:	NF-kappaB Signaling , JAK-STAT Signaling , Intracellular Steroid Hormone Receptor Signaling Pathway , Peptide Hormone Metabolism , Regulation of Intracellular Steroid Hormone Receptor Signaling , Regulation of Hormone Metabolic Process , Response to Growth Hormone Stimulus , Regulation of Hormone Biosynthetic Process

Application Details

Application Notes:	Western blotting: 0.5-3 µg/mL Immunohistochemistry: 5-30 µg/mL Immunocytochemistry: 5-30 µg/mL Optimal working dilutions must be determined by end user.
Comment:	The thermal stability is described by the loss rate. The loss rate was determined by accelerated thermal degradation test, that is, incubate the protein at 37°C for 48h, and no obvious degradation and precipitation were observed. The loss rate is less than 5% within the expiration date under appropriate storage condition.
Restrictions:	For Research Use only

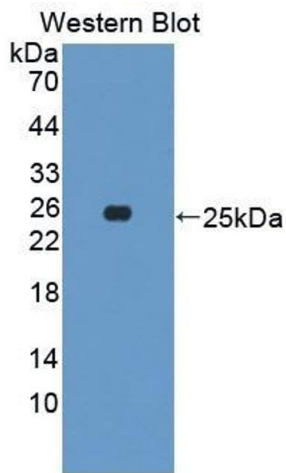
Handling

Format:	Liquid
Buffer:	PBS, pH 7.4, containing 0.02 % Sodium azide, 50 % glycerol.
Preservative:	Sodium azide
Precaution of Use:	This product contains Sodium azide: a POISONOUS AND HAZARDOUS SUBSTANCE which should be handled by trained staff only.
Storage:	4 °C,-20 °C
Storage Comment:	Store at 4°C for frequent use. Stored at -20°C in a manual defrost freezer for two year without detectable loss of activity. Avoid repeated freeze-thaw cycles.
Expiry Date:	24 months



Western Blotting

Image 1. Detection of GH in Rat Cerebellum lysate using Polyclonal Antibody to Growth Hormone (GH)



Western Blotting

Image 2. Detection of Recombinant GH, Canine using Polyclonal Antibody to Growth Hormone (GH)