

Datasheet for ABIN7429778  
**anti-Glucagon antibody (AA 21-180)**

## 5 Images

[Go to Product page](#)

## Overview

Quantity:	100 µL
Target:	Glucagon (GCG)
Binding Specificity:	AA 21-180
Reactivity:	Mouse
Host:	Rabbit
Clonality:	Polyclonal
Conjugate:	This Glucagon antibody is un-conjugated
Application:	Western Blotting (WB), Immunohistochemistry (IHC), Immunoprecipitation (IP), Immunocytochemistry (ICC)

## Product Details

Purpose:	Polyclonal Antibody to Glucagon (GCG)
Immunogen:	Recombinant Glucagon (GCG) corresponding to His21~Lys180
Isotype:	IgG
Specificity:	The antibody is a rabbit polyclonal antibody raised against GCG. It has been selected for its ability to recognize GCG in immunohistochemical staining and western blotting.
Purification:	Antigen-specific affinity chromatography followed by Protein A affinity chromatography

## Target Details

Target:	Glucagon (GCG)
---------	----------------

## Target Details

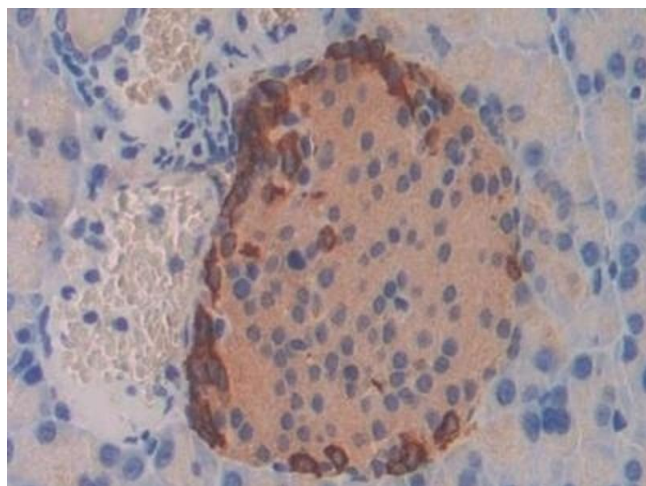
Alternative Name:	Glucagon ( <a href="#">GCG Products</a> )
Background:	GC, GLP1, GLP2, GRPP, Glicentin-Related Polypeptide, Glucagen, Oxyntomodulin, Incretin hormone
Pathways:	<a href="#">Positive Regulation of Peptide Hormone Secretion</a> , <a href="#">Peptide Hormone Metabolism</a> , <a href="#">cAMP Metabolic Process</a> , <a href="#">Regulation of Carbohydrate Metabolic Process</a> , <a href="#">Feeding Behaviour</a> , <a href="#">Negative Regulation of intrinsic apoptotic Signaling</a>

## Application Details

Application Notes:	Western blotting: 0.5-2 µg/mL Immunohistochemistry: 5-20 µg/mL Immunocytochemistry: 5-20 µg/mL Optimal working dilutions must be determined by end user.
Comment:	The thermal stability is described by the loss rate. The loss rate was determined by accelerated thermal degradation test, that is, incubate the protein at 37°C for 48h, and no obvious degradation and precipitation were observed. The loss rate is less than 5% within the expiration date under appropriate storage condition.
Restrictions:	For Research Use only

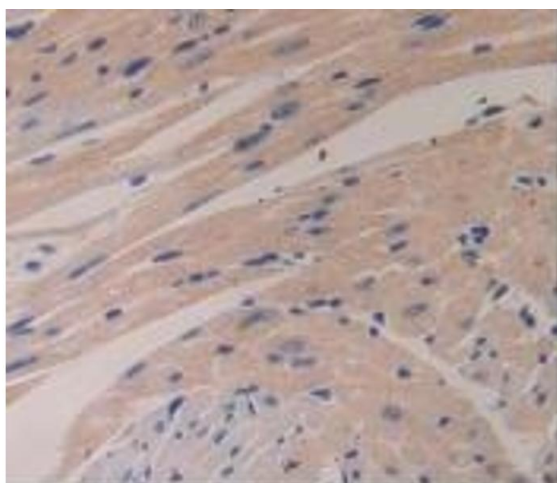
## Handling

Format:	Liquid
Buffer:	0.01M PBS, pH 7.4, containing 0.05 % Proclin-300, 50 % glycerol.
Preservative:	ProClin
Precaution of Use:	This product contains ProClin: a POISONOUS AND HAZARDOUS SUBSTANCE which should be handled by trained staff only.
Storage:	4 °C,-20 °C
Storage Comment:	Store at 4°C for frequent use. Stored at -20°C in a manual defrost freezer for two year without detectable loss of activity. Avoid repeated freeze-thaw cycles.
Expiry Date:	24 months



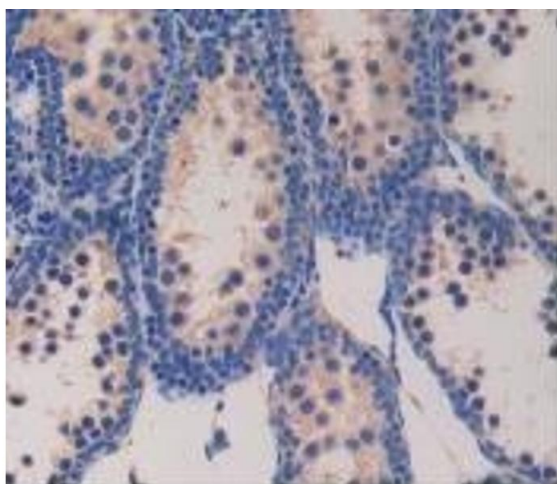
#### Immunohistochemistry

**Image 1.** Detection of GCG in Mouse Pancreas Tissue using Polyclonal Antibody to Glucagon (GCG)



#### Immunohistochemistry

**Image 2.** Detection of GCG in Mouse Heart Tissue using Polyclonal Antibody to Glucagon (GCG)



#### Immunohistochemistry

**Image 3.** Detection of GCG in Mouse Testis Tissue using Polyclonal Antibody to Glucagon (GCG)

Please check the [product details page](#) for more images. Overall 5 images are available for ABIN7429778.