

Datasheet for ABIN7430111
anti-SEMA3E antibody (AA 32-516)

7 Images

[Go to Product page](#)

Overview

Quantity:	100 µL
Target:	SEMA3E
Binding Specificity:	AA 32-516
Reactivity:	Human
Host:	Rabbit
Clonality:	Polyclonal
Application:	Western Blotting (WB), Immunohistochemistry (IHC), Immunoprecipitation (IP), Immunocytochemistry (ICC)

Product Details

Purpose:	Polyclonal Antibody to Semaphorin 3E (SEMA3E)
Immunogen:	Recombinant Semaphorin 3E (SEMA3E) corresponding to Arg32~Phe516 with N-terminal His Tag
Isotype:	IgG
Specificity:	The antibody is a rabbit polyclonal antibody raised against SEMA3E. It has been selected for its ability to recognize SEMA3E in immunohistochemical staining and western blotting.
Purification:	Antigen-specific affinity chromatography followed by Protein A affinity chromatography

Target Details

Target:	SEMA3E
Alternative Name:	Semaphorin 3E (SEMA3E Products)

Target Details

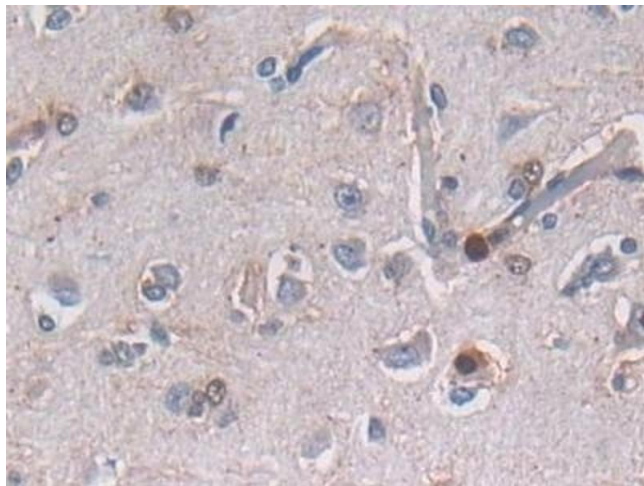
Background:	SEMAH, M-SemaK, M-sema H, coll-5, Sema Domain,Immunoglobulin Domain(Ig),Transmembrane Domain(TM)and Short Cytoplasmic Domain 3E
-------------	---

Application Details

Application Notes:	Western blotting: 0.5-2 µg/mL Immunocytochemistry in formalin fixed cells: 5-20 µg/mL Immunohistochemistry in formalin fixed frozen section: 5-20 µg/mL Immunohistochemistry in paraffin section: 5-20 µg/mL Enzyme-linked Immunosorbent Assay: 0.05-2 µg/mL Optimal working dilutions must be determined by end user.
Comment:	The thermal stability is described by the loss rate. The loss rate was determined by accelerated thermal degradation test, that is, incubate the protein at 37°C for 48h, and no obvious degradation and precipitation were observed. The loss rate is less than 5% within the expiration date under appropriate storage condition.
Restrictions:	For Research Use only

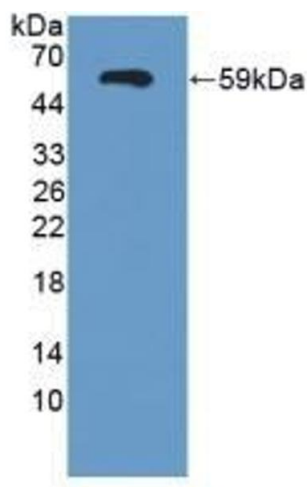
Handling

Format:	Liquid
Buffer:	0.01M PBS, pH 7.4, containing 0.05 % Proclin-300, 50 % glycerol.
Preservative:	ProClin
Precaution of Use:	This product contains ProClin: a POISONOUS AND HAZARDOUS SUBSTANCE which should be handled by trained staff only.
Storage:	4 °C,-20 °C
Storage Comment:	Store at 4°C for frequent use. Stored at -20°C in a manual defrost freezer for two year without detectable loss of activity. Avoid repeated freeze-thaw cycles.
Expiry Date:	24 months



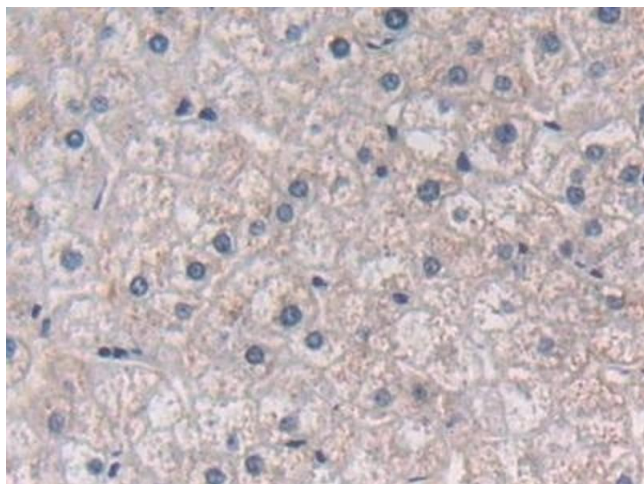
Immunohistochemistry

Image 1. Detection of SEMA3E in Human Cerebrum Tissue using Polyclonal Antibody to Semaphorin 3E (SEMA3E)



Western Blotting

Image 2. Detection of Recombinant SEMA3E, Human using Polyclonal Antibody to Semaphorin 3E (SEMA3E)



Immunohistochemistry

Image 3. Detection of SEMA3E in Human Liver Tissue using Polyclonal Antibody to Semaphorin 3E (SEMA3E)

Please check the [product details page](#) for more images. Overall 7 images are available for ABIN7430111.