



[Go to Product page](#)

Datasheet for ABIN7430168
anti-RBM20 antibody (AA 1089-1227)

2 Images

Overview

Quantity:	100 µL
Target:	RBM20
Binding Specificity:	AA 1089-1227
Reactivity:	Human
Host:	Rabbit
Clonality:	Polyclonal
Conjugate:	This RBM20 antibody is un-conjugated
Application:	Western Blotting (WB), Immunohistochemistry (IHC), Immunoprecipitation (IP), Immunocytochemistry (ICC)

Product Details

Purpose:	Polyclonal Antibody to RNA Binding Motif Protein 20 (RBM20)
Immunogen:	Recombinant RNA Binding Motif Protein 20 (RBM20) corresponding to Pro1089~Leu1227 with N-terminal His Tag
Isotype:	IgG
Specificity:	The antibody is a rabbit polyclonal antibody raised against RBM20. It has been selected for its ability to recognize RBM20 in immunohistochemical staining and western blotting.
Cross-Reactivity:	Pig
Purification:	Antigen-specific affinity chromatography followed by Protein A affinity chromatography

Target Details

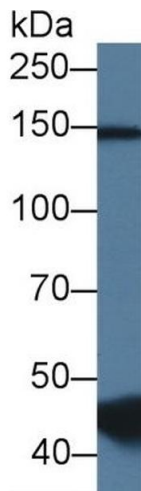
Target:	RBM20
Alternative Name:	RNA Binding Motif Protein 20 (RBM20 Products)

Application Details

Application Notes:	Western blotting: 0.5-2 µg/mL Immunohistochemistry: 5-20 µg/mL Immunocytochemistry: 5-20 µg/mL Optimal working dilutions must be determined by end user.
Comment:	The thermal stability is described by the loss rate. The loss rate was determined by accelerated thermal degradation test, that is, incubate the protein at 37°C for 48h, and no obvious degradation and precipitation were observed. The loss rate is less than 5% within the expiration date under appropriate storage condition.
Restrictions:	For Research Use only

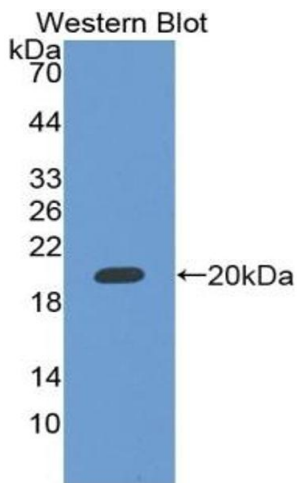
Handling

Format:	Liquid
Buffer:	0.01M PBS, pH 7.4, containing 0.05 % Proclin-300, 50 % glycerol.
Preservative:	ProClin
Precaution of Use:	This product contains ProClin: a POISONOUS AND HAZARDOUS SUBSTANCE which should be handled by trained staff only.
Storage:	4 °C,-20 °C
Storage Comment:	Store at 4°C for frequent use. Stored at -20°C in a manual defrost freezer for two year without detectable loss of activity. Avoid repeated freeze-thaw cycles.
Expiry Date:	24 months



Western Blotting

Image 1. Detection of RBM20 in Porcine Skeletal muscle lysate using Polyclonal Antibody to RNA Binding Motif Protein 20 (RBM20)



Western Blotting

Image 2. Detection of Recombinant RBM20, Human using Polyclonal Antibody to RNA Binding Motif Protein 20 (RBM20)