

Datasheet for ABIN7430177
anti-RGC32 antibody (AA 1-137)

2 Images

[Go to Product page](#)

Overview

Quantity:	100 µL
Target:	RGC32 (C13orf15)
Binding Specificity:	AA 1-137
Reactivity:	Human
Host:	Rabbit
Clonality:	Polyclonal
Conjugate:	This RGC32 antibody is un-conjugated
Application:	Western Blotting (WB), Immunohistochemistry (IHC), Immunoprecipitation (IP), Immunocytochemistry (ICC)

Product Details

Purpose:	Polyclonal Antibody to Response Gene To Complement 32 (RGC32)
Immunogen:	Recombinant Response Gene To Complement 32 (RGC32) corresponding to Met1~Met137
Isotype:	IgG
Specificity:	The antibody is a rabbit polyclonal antibody raised against RGC32. It has been selected for its ability to recognize RGC32 in immunohistochemical staining and western blotting.
Cross-Reactivity:	Mouse, Pig, Rat
Purification:	Antigen-specific affinity chromatography followed by Protein A affinity chromatography

Target Details

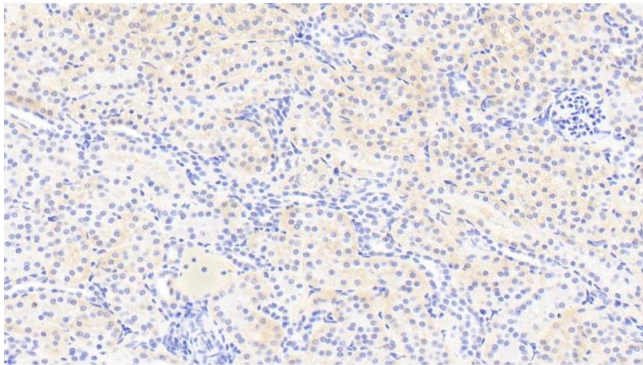
Target:	RGC32 (C13orf15)
Alternative Name:	Response Gene To Complement 32 (C13orf15 Products)
Background:	RGCC, C13orf15, Regulator of cell cycle RGCC

Application Details

Application Notes:	Western blotting: 0.5-2 µg/mL 1:180-720 Immunohistochemistry: 5-20 µg/mL 1:18-72 Immunocytochemistry: 5-20 µg/mL 1:18-72 Optimal working dilutions must be determined by end user.
Comment:	The thermal stability is described by the loss rate. The loss rate was determined by accelerated thermal degradation test, that is, incubate the protein at 37°C for 48h, and no obvious degradation and precipitation were observed. The loss rate is less than 5% within the expiration date under appropriate storage condition.
Restrictions:	For Research Use only

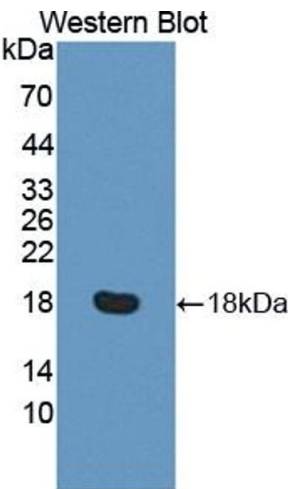
Handling

Format:	Liquid
Buffer:	0.01M PBS, pH 7.4, containing 0.05 % Proclin-300, 50 % glycerol.
Preservative:	ProClin
Precaution of Use:	This product contains ProClin: a POISONOUS AND HAZARDOUS SUBSTANCE which should be handled by trained staff only.
Storage:	4 °C,-20 °C
Storage Comment:	Store at 4°C for frequent use. Stored at -20°C in a manual defrost freezer for two year without detectable loss of activity. Avoid repeated freeze-thaw cycles.
Expiry Date:	24 months



Immunohistochemistry

Image 1. Detection of RGC32 in Human Kidney Tissue using Polyclonal Antibody to Response Gene To Complement 32 (RGC32)



Western Blotting

Image 2. Detection of Recombinant RGC32, Human using Polyclonal Antibody to Response Gene To Complement 32 (RGC32)