

Datasheet for ABIN7430234
anti-BIM antibody (AA 2-120)[Go to Product page](#)

8 Images

Overview

Quantity:	100 µL
Target:	BIM (BCL2L11)
Binding Specificity:	AA 2-120
Reactivity:	Human
Host:	Rabbit
Clonality:	Polyclonal
Conjugate:	This BIM antibody is un-conjugated
Application:	Western Blotting (WB), Immunohistochemistry (IHC), Immunocytochemistry (ICC), Immunoprecipitation (IP)

Product Details

Purpose:	Polyclonal Antibody to Bcl2 Like Protein 11 (BCL2L11)
Immunogen:	Recombinant Bcl2 Like Protein 11 (BCL2L11) corresponding to Ala2~Arg120 (Accession # O43521)
Isotype:	IgG
Specificity:	The antibody is a rabbit polyclonal antibody raised against BCL2L11. It has been selected for its ability to recognize BCL2L11 in immunohistochemical staining and western blotting.
Cross-Reactivity:	Dog, Mouse, Pig, Rat
Purification:	Antigen-specific affinity chromatography followed by Protein A affinity chromatography

Target Details

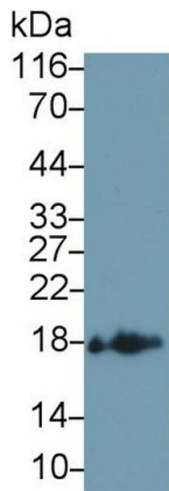
Target:	BIM (BCL2L11)
Alternative Name:	Bcl2 Like Protein 11 (BCL2L11 Products)
Background:	BOD, BimL, BimEL, BIM, Bcl2-interacting mediator of cell death
Pathways:	PI3K-Akt Signaling , Neurotrophin Signaling Pathway , Tube Formation , Positive Regulation of Endopeptidase Activity

Application Details

Application Notes:	Western blotting: 0.5-2 µg/mL Immunohistochemistry: 5-20 µg/mL Immunocytochemistry: 5-20 µg/mL Optimal working dilutions must be determined by end user.
Comment:	The thermal stability is described by the loss rate. The loss rate was determined by accelerated thermal degradation test, that is, incubate the protein at 37°C for 48h, and no obvious degradation and precipitation were observed. The loss rate is less than 5% within the expiration date under appropriate storage condition.
Restrictions:	For Research Use only

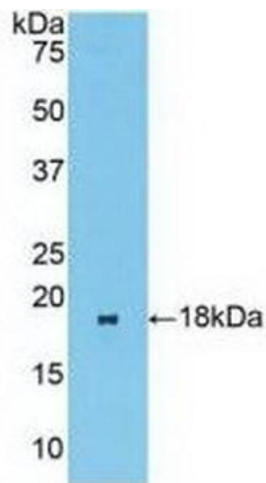
Handling

Format:	Liquid
Buffer:	0.01M PBS, pH 7.4, containing 0.05 % Proclin-300, 50 % glycerol.
Preservative:	ProClin
Precaution of Use:	This product contains ProClin: a POISONOUS AND HAZARDOUS SUBSTANCE which should be handled by trained staff only.
Storage:	4 °C,-20 °C
Storage Comment:	Store at 4°C for frequent use. Stored at -20°C in a manual defrost freezer for two year without detectable loss of activity. Avoid repeated freeze-thaw cycles.
Expiry Date:	24 months



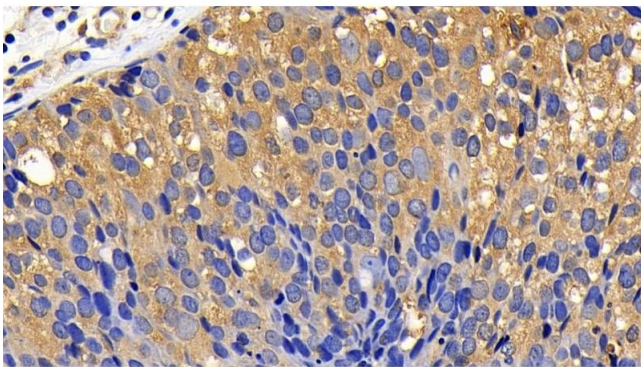
Western Blotting

Image 1. Detection of BCL2L11 in Canine Uterus lysate using Polyclonal Antibody to Bcl2 Like Protein 11 (BCL2L11)



Western Blotting

Image 2. Detection of Recombinant BCL2L11, Human using Polyclonal Antibody to Bcl2 Like Protein 11 (BCL2L11)



Immunohistochemistry

Image 3. Detection of BCL2L11 in Human Breast cancer Tissue using Polyclonal Antibody to Bcl2 Like Protein 11 (BCL2L11)

Please check the [product details page](#) for more images. Overall 8 images are available for ABIN7430234.