

Datasheet for ABIN7430297

anti-Angiotensin I Converting Enzyme 1 antibody (AA 814-1071)[Go to Product page](#)

5 Images

Overview

Quantity:	100 µL
Target:	Angiotensin I Converting Enzyme 1 (ACE)
Binding Specificity:	AA 814-1071
Reactivity:	Human
Host:	Rabbit
Clonality:	Polyclonal
Conjugate:	This Angiotensin I Converting Enzyme 1 antibody is un-conjugated
Application:	Western Blotting (WB), ELISA, Immunohistochemistry (Paraffin-embedded Sections) (IHC (p)), Immunocytochemistry (ICC), Immunohistochemistry (Frozen Sections) (IHC (fro))

Product Details

Purpose:	Polyclonal Antibody to Angiotensin I Converting Enzyme (ACE)
Immunogen:	Recombinant Angiotensin I Converting Enzyme (ACE) corresponding to Arg814~Gln1071 with N-terminal His and GST Tag
Isotype:	IgG
Specificity:	The antibody is a rabbit polyclonal antibody raised against ACE. It has been selected for its ability to recognize ACE in immunohistochemical staining and western blotting.
Purification:	Antigen-specific affinity chromatography followed by Protein A affinity chromatography

Target Details

Target:	Angiotensin I Converting Enzyme 1 (ACE)
---------	---

Target Details

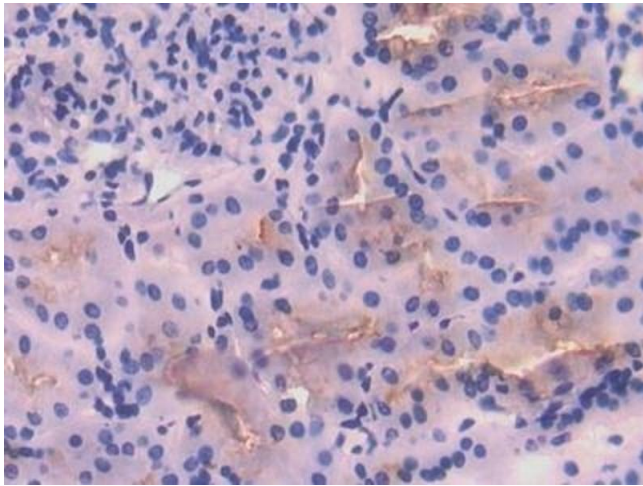
Alternative Name:	Angiotensin I Converting Enzyme (ACE Products)
Background:	CD143, ACE1, DCP1, ACEI, ACE-I, Kininase II, Angiotensin-Converting Enzyme, Peptidyl-Dipeptidase A, Dipeptidyl Carboxypeptidase 1, Angiotensin-converting enzyme, soluble form
Pathways:	ACE Inhibitor Pathway , Peptide Hormone Metabolism , Regulation of Systemic Arterial Blood Pressure by Hormones , Feeding Behaviour , Smooth Muscle Cell Migration

Application Details

Application Notes:	Western blotting: 0.5-2 µg/mL Immunohistochemistry: 5-20 µg/mL Immunocytochemistry: 5-20 µg/mL Optimal working dilutions must be determined by end user.
Comment:	The thermal stability is described by the loss rate. The loss rate was determined by accelerated thermal degradation test, that is, incubate the protein at 37°C for 48h, and no obvious degradation and precipitation were observed. The loss rate is less than 5% within the expiration date under appropriate storage condition.
Restrictions:	For Research Use only

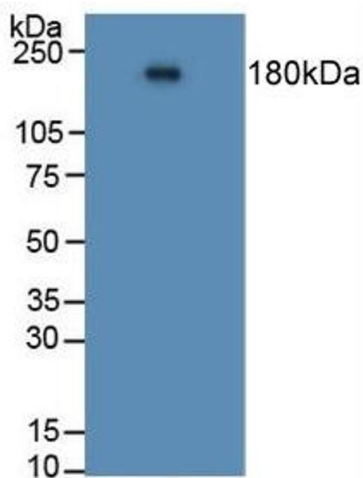
Handling

Format:	Liquid
Buffer:	0.01M PBS, pH 7.4, containing 0.05 % Proclin-300, 50 % glycerol.
Preservative:	ProClin
Precaution of Use:	This product contains ProClin: a POISONOUS AND HAZARDOUS SUBSTANCE which should be handled by trained staff only.
Storage:	4 °C,-20 °C
Storage Comment:	Store at 4°C for frequent use. Stored at -20°C in a manual defrost freezer for two year without detectable loss of activity. Avoid repeated freeze-thaw cycles.
Expiry Date:	24 months



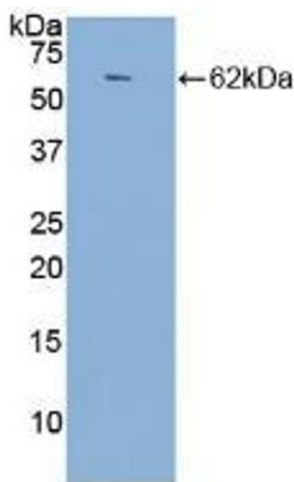
Immunohistochemistry

Image 1. Detection of ACE in Human Kidney Tissue using Polyclonal Antibody to Angiotensin I Converting Enzyme (ACE)



Western Blotting

Image 2. Detection of ACE in Human Lung Tissue using Polyclonal Antibody to Angiotensin I Converting Enzyme (ACE)



Western Blotting

Image 3. Detection of Recombinant ACE, Human using Polyclonal Antibody to Angiotensin I Converting Enzyme (ACE)

Please check the [product details page](#) for more images. Overall 5 images are available for ABIN7430297.