

Datasheet for ABIN7430444

anti-Selectin E/CD62e antibody (AA 108-238)[Go to Product page](#)**2** Images

Overview

Quantity:	100 µL
Target:	Selectin E/CD62e (SELE)
Binding Specificity:	AA 108-238
Reactivity:	Human
Host:	Rabbit
Clonality:	Polyclonal
Conjugate:	This Selectin E/CD62e antibody is un-conjugated
Application:	Western Blotting (WB), Immunohistochemistry (IHC), Immunoprecipitation (IP), Immunocytochemistry (ICC)

Product Details

Purpose:	Polyclonal Antibody to E-selectin
Immunogen:	Recombinant E-selectin corresponding to Asp108~Asn238 with N-terminal His Tag
Isotype:	IgG
Specificity:	The antibody is a rabbit polyclonal antibody raised against E-selectin. It has been selected for its ability to recognize E-selectin in immunohistochemical staining and western blotting.
Purification:	Antigen-specific affinity chromatography followed by Protein A affinity chromatography

Target Details

Target:	Selectin E/CD62e (SELE)
---------	-------------------------

Target Details

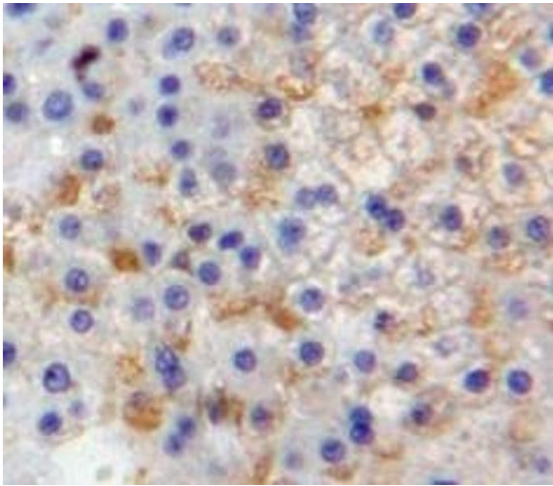
Alternative Name:	E-selectin (SELE Products)
Background:	CD62E, CD62-E, E-Selectin, ELAM, ELAM1, ESEL, SEL-E, E-LAM, E-LAM1, E-SEL, LECAM2, Endothelial Leukocyte Adhesion Molecule 1, CD62 Antigen-Like Family Member E
Pathways:	Thromboxane A2 Receptor Signaling

Application Details

Application Notes:	Western blotting: 0.5-2 µg/mL Immunohistochemistry: 5-20 µg/mL Immunocytochemistry: 5-20 µg/mL Optimal working dilutions must be determined by end user.
Comment:	The thermal stability is described by the loss rate. The loss rate was determined by accelerated thermal degradation test, that is, incubate the protein at 37°C for 48h, and no obvious degradation and precipitation were observed. The loss rate is less than 5% within the expiration date under appropriate storage condition.
Restrictions:	For Research Use only

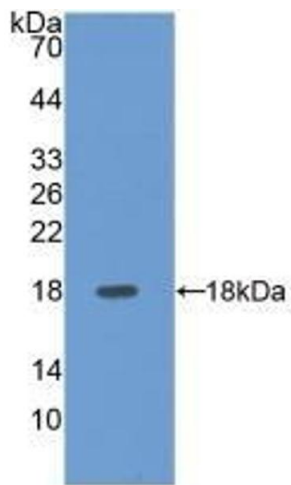
Handling

Format:	Liquid
Buffer:	0.01M PBS, pH 7.4, containing 0.05 % Proclin-300, 50 % glycerol.
Preservative:	ProClin
Precaution of Use:	This product contains ProClin: a POISONOUS AND HAZARDOUS SUBSTANCE which should be handled by trained staff only.
Storage:	4 °C, -20 °C
Storage Comment:	Store at 4°C for frequent use. Stored at -20°C in a manual defrost freezer for two year without detectable loss of activity. Avoid repeated freeze-thaw cycles.
Expiry Date:	24 months



Immunohistochemistry

Image 1. #VALUE!



Western Blotting

Image 2. Detection of Recombinant SELE, Human using Polyclonal Antibody to E-selectin