



[Go to Product page](#)

Datasheet for ABIN7430546  
**anti-GM-CSF antibody (AA 18-144)**

3 Images

### Overview

Quantity:	100 µL
Target:	GM-CSF (CSF2)
Binding Specificity:	AA 18-144
Reactivity:	Human
Host:	Rabbit
Clonality:	Polyclonal
Conjugate:	This GM-CSF antibody is un-conjugated
Application:	Western Blotting (WB), Immunohistochemistry (IHC), Immunoprecipitation (IP), Immunocytochemistry (ICC)

### Product Details

Purpose:	Polyclonal Antibody to Colony Stimulating Factor 2, Granulocyte Macrophage (GM-CSF)
Immunogen:	Recombinant Colony Stimulating Factor 2, Granulocyte Macrophage (GM-CSF) corresponding to Ala18~Glu144 with N-terminal His and GST Tag
Isotype:	IgG
Specificity:	The antibody is a rabbit polyclonal antibody raised against GM-CSF. It has been selected for its ability to recognize GM-CSF in immunohistochemical staining and western blotting.
Purification:	Antigen-specific affinity chromatography followed by Protein A affinity chromatography

### Target Details

Target:	GM-CSF (CSF2)
---------	---------------

## Target Details

---

Alternative Name:	Colony Stimulating Factor 2, Granulocyte Macrophage ( <a href="#">CSF2 Products</a> )
Background:	CSF2, GMCSF, Sargramostim, Molgramostin, Granulocyte-Macrophage Colony Stimulating Factor
Pathways:	<a href="#">JAK-STAT Signaling</a> , <a href="#">Cellular Response to Molecule of Bacterial Origin</a>

## Application Details

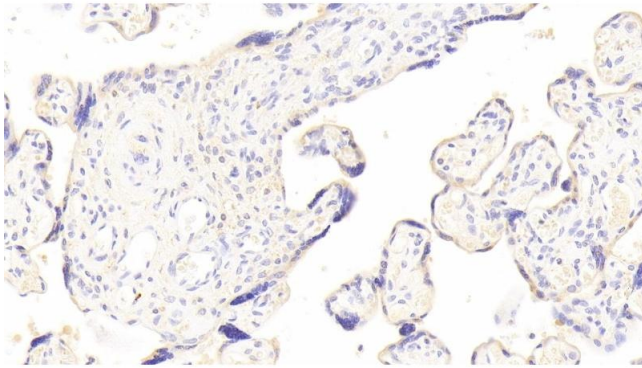
---

Application Notes:	Western blotting: 0.5-2 µg/mL Immunohistochemistry: 5-20 µg/mL Immunocytochemistry: 5-20 µg/mL Optimal working dilutions must be determined by end user.
Comment:	The thermal stability is described by the loss rate. The loss rate was determined by accelerated thermal degradation test, that is, incubate the protein at 37°C for 48h, and no obvious degradation and precipitation were observed. The loss rate is less than 5% within the expiration date under appropriate storage condition.
Restrictions:	For Research Use only

## Handling

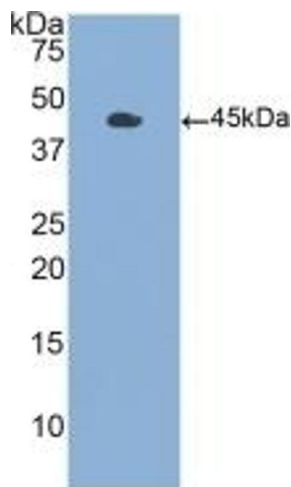
---

Format:	Liquid
Buffer:	0.01M PBS, pH 7.4, containing 0.05 % Proclin-300, 50 % glycerol.
Preservative:	ProClin
Precaution of Use:	This product contains ProClin: a POISONOUS AND HAZARDOUS SUBSTANCE which should be handled by trained staff only.
Storage:	4 °C, -20 °C
Storage Comment:	Store at 4°C for frequent use. Stored at -20°C in a manual defrost freezer for two year without detectable loss of activity. Avoid repeated freeze-thaw cycles.
Expiry Date:	24 months



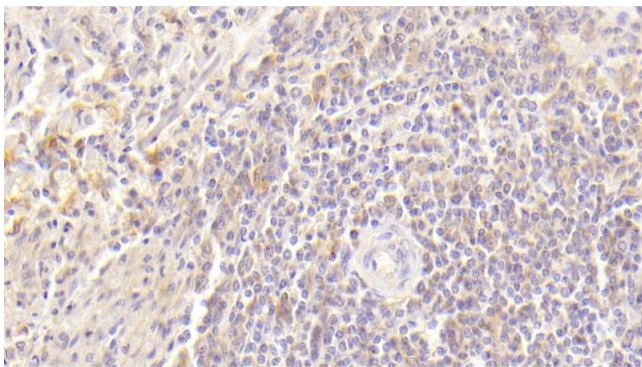
### Immunohistochemistry

**Image 1.** Detection of GM-CSF in Human Placenta Tissue using Polyclonal Antibody to Colony Stimulating Factor 2, Granulocyte Macrophage (GM-CSF)



### Western Blotting

**Image 2.** Detection of Recombinant GMCSF, Human using Polyclonal Antibody to Colony Stimulating Factor 2, Granulocyte Macrophage (GM-CSF)



### Immunohistochemistry

**Image 3.** Detection of GM-CSF in Human Spleen Tissue using Polyclonal Antibody to Colony Stimulating Factor 2, Granulocyte Macrophage (GM-CSF)