

Datasheet for ABIN7430678
anti-IL-15 antibody (AA 50-162)

5 Images

[Go to Product page](#)

Overview

Quantity:	100 µL
Target:	IL-15 (IL15)
Binding Specificity:	AA 50-162
Reactivity:	Human
Host:	Rabbit
Clonality:	Polyclonal
Conjugate:	This IL-15 antibody is un-conjugated
Application:	Western Blotting (WB), Immunohistochemistry (IHC), Immunoprecipitation (IP), Immunocytochemistry (ICC)

Product Details

Purpose:	Polyclonal Antibody to Interleukin 15 (IL15)
Immunogen:	Recombinant Interleukin 15 (IL15) corresponding to Trp50~Ser162 with N-terminal His Tag
Isotype:	IgG
Specificity:	The antibody is a rabbit polyclonal antibody raised against IL15. It has been selected for its ability to recognize IL15 in immunohistochemical staining and western blotting.
Purification:	Antigen-specific affinity chromatography followed by Protein A affinity chromatography

Target Details

Target:	IL-15 (IL15)
---------	--------------

Target Details

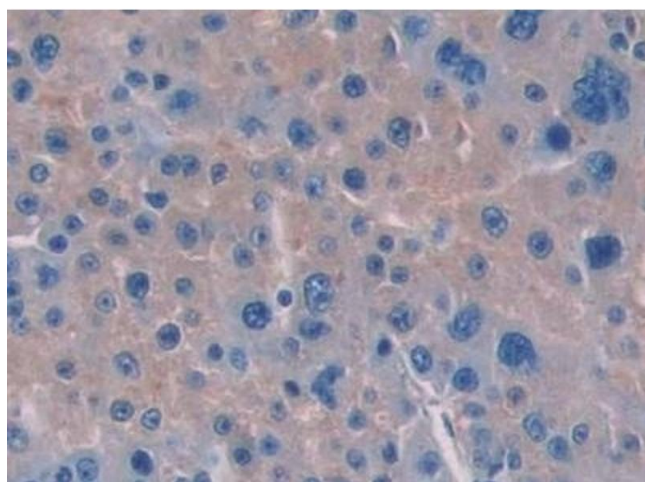
Alternative Name:	Interleukin 15 (IL15 Products)
Pathways:	JAK-STAT Signaling , Glycosaminoglycan Metabolic Process

Application Details

Application Notes:	Western blotting: 0.5-2 µg/mL Immunohistochemistry: 5-20 µg/mL Immunocytochemistry: 5-20 µg/mL Optimal working dilutions must be determined by end user.
Comment:	The thermal stability is described by the loss rate. The loss rate was determined by accelerated thermal degradation test, that is, incubate the protein at 37°C for 48h, and no obvious degradation and precipitation were observed. The loss rate is less than 5% within the expiration date under appropriate storage condition.
Restrictions:	For Research Use only

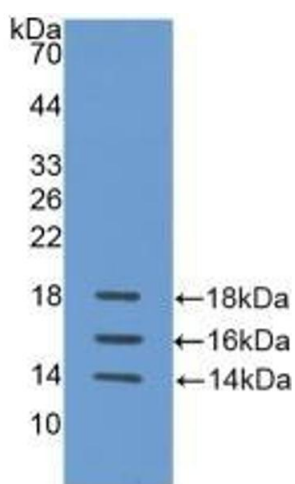
Handling

Format:	Liquid
Buffer:	0.01M PBS, pH 7.4, containing 0.05 % Proclin-300, 50 % glycerol.
Preservative:	ProClin
Precaution of Use:	This product contains ProClin: a POISONOUS AND HAZARDOUS SUBSTANCE which should be handled by trained staff only.
Storage:	4 °C,-20 °C
Storage Comment:	Store at 4°C for frequent use. Stored at -20°C in a manual defrost freezer for two year without detectable loss of activity. Avoid repeated freeze-thaw cycles.
Expiry Date:	24 months



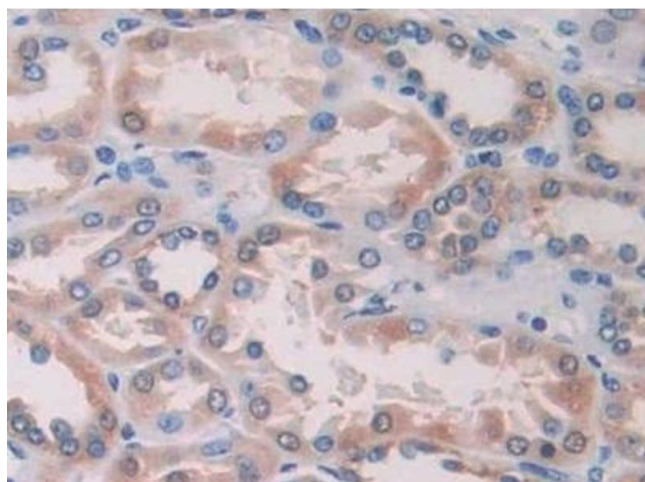
Immunohistochemistry

Image 1. Detection of IL15 in Human Liver cancer Tissue using Polyclonal Antibody to Interleukin 15 (IL15)



Western Blotting

Image 2. Detection of Recombinant IL15, Human using Polyclonal Antibody to Interleukin 15 (IL15)



Immunohistochemistry

Image 3. Detection of IL15 in Human Kidney Tissue using Polyclonal Antibody to Interleukin 15 (IL15)

Please check the [product details page](#) for more images. Overall 5 images are available for ABIN7430678.