

Datasheet for ABIN7430696
anti-IL16 antibody (AA 1203-1322)[Go to Product page](#)

3 Images

Overview

| | |
|----------------------|--|
| Quantity: | 100 µL |
| Target: | IL16 |
| Binding Specificity: | AA 1203-1322 |
| Reactivity: | Mouse |
| Host: | Rabbit |
| Clonality: | Polyclonal |
| Conjugate: | This IL16 antibody is un-conjugated |
| Application: | Western Blotting (WB), Immunohistochemistry (IHC), Immunoprecipitation (IP), Immunocytochemistry (ICC) |

Product Details

| | |
|-------------------|--|
| Purpose: | Polyclonal Antibody to Interleukin 16 (IL16) |
| Immunogen: | Recombinant Interleukin 16 (IL16) corresponding to Thr1203~Ser1322 (Accession # 054824) |
| Isotype: | IgG |
| Specificity: | The antibody is a rabbit polyclonal antibody raised against IL16. It has been selected for its ability to recognize IL16 in immunohistochemical staining and western blotting. |
| Cross-Reactivity: | Rat |
| Purification: | Antigen-specific affinity chromatography followed by Protein A affinity chromatography |

Target Details

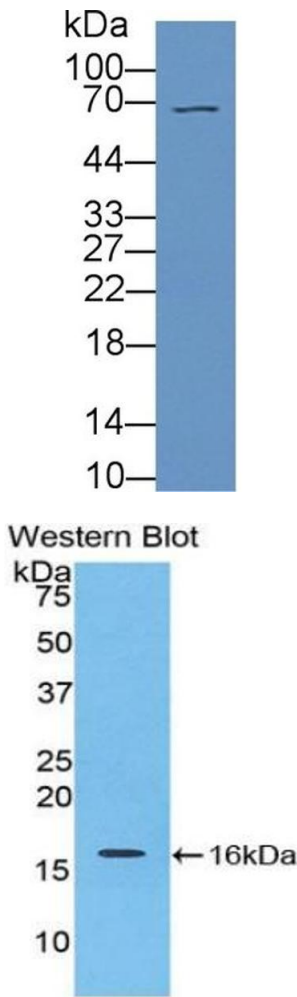
| | |
|-------------------|---|
| Target: | IL16 |
| Alternative Name: | Interleukin 16 (IL16 Products) |
| Background: | LCF, PrIL-16, Lymphocyte Chemoattractant Factor, Pro-Interleukin 16 |

Application Details

| | |
|--------------------|---|
| Application Notes: | Western blotting: 0.5-2 µg/mL 1:470-1900 Immunohistochemistry: 5-20 µg/mL 1:47-190 Immunocytochemistry: 5-20 µg/mL 1:47-190 Optimal working dilutions must be determined by end user. |
| Comment: | The thermal stability is described by the loss rate. The loss rate was determined by accelerated thermal degradation test, that is, incubate the protein at 37°C for 48h, and no obvious degradation and precipitation were observed. The loss rate is less than 5% within the expiration date under appropriate storage condition. |
| Restrictions: | For Research Use only |

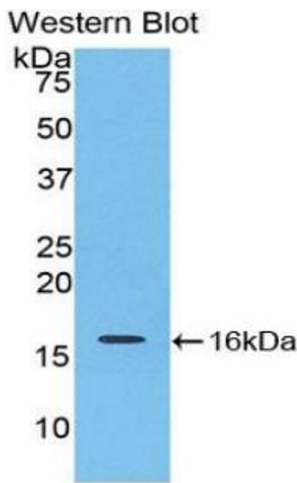
Handling

| | |
|--------------------|---|
| Format: | Liquid |
| Buffer: | 0.01M PBS, pH 7.4, containing 0.05 % Proclin-300, 50 % glycerol. |
| Preservative: | ProClin |
| Precaution of Use: | This product contains ProClin: a POISONOUS AND HAZARDOUS SUBSTANCE which should be handled by trained staff only. |
| Storage: | 4 °C,-20 °C |
| Storage Comment: | Store at 4°C for frequent use. Stored at -20°C in a manual defrost freezer for two year without detectable loss of activity. Avoid repeated freeze-thaw cycles. |
| Expiry Date: | 24 months |



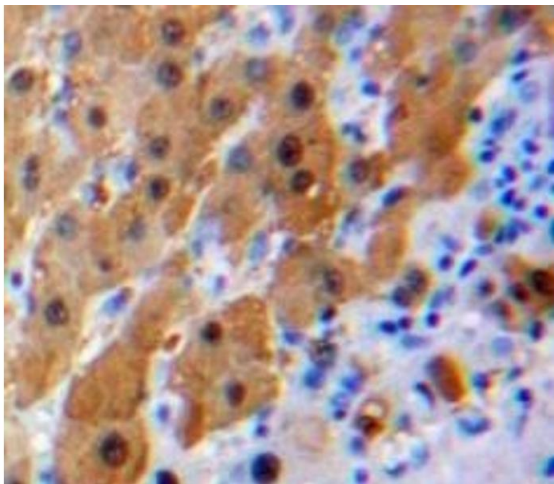
Western Blotting

Image 1. Detection of IL16 in Mouse Spleen lysate using Polyclonal Antibody to Interleukin 16 (IL16)



Western Blotting

Image 2. Detection of Recombinant IL16, Mouse using Polyclonal Antibody to Interleukin 16 (IL16)



Immunohistochemistry

Image 3. #VALUE!