

Datasheet for ABIN7430873
anti-Leptin Receptor antibody (AA 310-539)[Go to Product page](#)

7 Images

Overview

| | |
|----------------------|--|
| Quantity: | 100 µL |
| Target: | Leptin Receptor (LEPR) |
| Binding Specificity: | AA 310-539 |
| Reactivity: | Human |
| Host: | Rabbit |
| Clonality: | Polyclonal |
| Conjugate: | This Leptin Receptor antibody is un-conjugated |
| Application: | Western Blotting (WB), ELISA, Immunohistochemistry (Paraffin-embedded Sections) (IHC (p)), Immunocytochemistry (ICC), Immunohistochemistry (Frozen Sections) (IHC (fro)) |

Product Details

| | |
|-------------------|--|
| Purpose: | Polyclonal Antibody to Leptin Receptor (LEPR) |
| Immunogen: | Recombinant Leptin Receptor (LEPR) corresponding to Gly310~Pro539 |
| Isotype: | IgG |
| Specificity: | The antibody is a rabbit polyclonal antibody raised against LEPR. It has been selected for its ability to recognize LEPR in immunohistochemical staining and western blotting. |
| Cross-Reactivity: | Pig |
| Purification: | Antigen-specific affinity chromatography followed by Protein A affinity chromatography |

Target Details

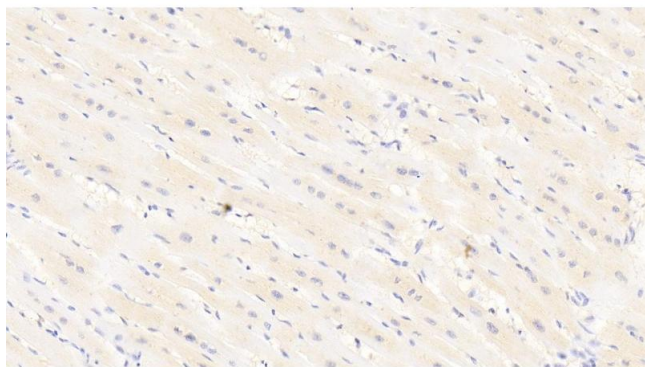
| | |
|-------------------|---|
| Target: | Leptin Receptor (LEPR) |
| Alternative Name: | Leptin Receptor (LEPR Products) |
| Background: | CD295, LEPR, OBR, LR |
| Pathways: | JAK-STAT Signaling , AMPK Signaling , Feeding Behaviour |

Application Details

| | |
|--------------------|---|
| Application Notes: | Western blotting: 0.5-2 µg/mL Immunohistochemistry: 5-20 µg/mL Immunocytochemistry: 5-20 µg/mL Optimal working dilutions must be determined by end user. |
| Comment: | The thermal stability is described by the loss rate. The loss rate was determined by accelerated thermal degradation test, that is, incubate the protein at 37°C for 48h, and no obvious degradation and precipitation were observed. The loss rate is less than 5% within the expiration date under appropriate storage condition. |
| Restrictions: | For Research Use only |

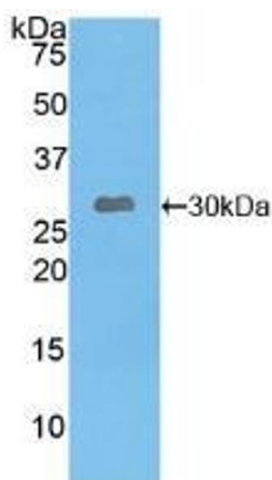
Handling

| | |
|--------------------|---|
| Format: | Liquid |
| Buffer: | 0.01M PBS, pH 7.4, containing 0.05 % Proclin-300, 50 % glycerol. |
| Preservative: | ProClin |
| Precaution of Use: | This product contains ProClin: a POISONOUS AND HAZARDOUS SUBSTANCE which should be handled by trained staff only. |
| Storage: | 4 °C, -20 °C |
| Storage Comment: | Store at 4°C for frequent use. Stored at -20°C in a manual defrost freezer for two year without detectable loss of activity. Avoid repeated freeze-thaw cycles. |
| Expiry Date: | 24 months |



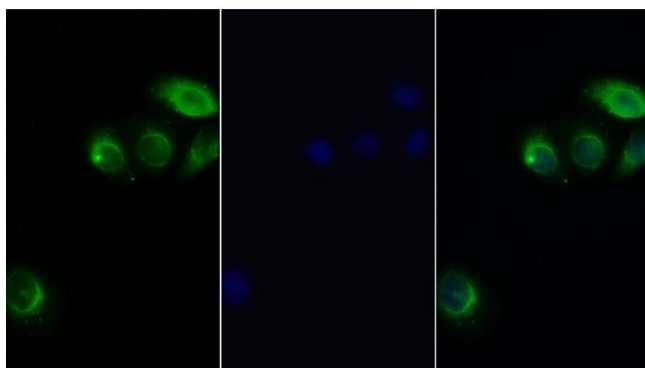
Immunohistochemistry

Image 1. Detection of LEPR in Human Cardiac Muscle Tissue using Polyclonal Antibody to Leptin Receptor (LEPR)



Western Blotting

Image 2. Detection of Recombinant LEPR, Human using Polyclonal Antibody to Leptin Receptor (LEPR)



Immunofluorescence

Image 3. Detection of LEPR in Human HeLa cell using Polyclonal Antibody to Leptin Receptor (LEPR)

Please check the [product details page](#) for more images. Overall 7 images are available for ABIN7430873.