

Datasheet for ABIN7430879

anti-Leptin Receptor antibody (AA 238-375)**6** Images[Go to Product page](#)

Overview

Quantity:	100 µL
Target:	Leptin Receptor (LEPR)
Binding Specificity:	AA 238-375
Reactivity:	Rat
Host:	Rabbit
Clonality:	Polyclonal
Conjugate:	This Leptin Receptor antibody is un-conjugated
Application:	Western Blotting (WB), Immunohistochemistry (IHC), Immunoprecipitation (IP), Immunocytochemistry (ICC)

Product Details

Purpose:	Polyclonal Antibody to Leptin Receptor (LEPR)
Immunogen:	Recombinant Leptin Receptor (LEPR) corresponding to Pro238~Pro375
Isotype:	IgG
Specificity:	The antibody is a rabbit polyclonal antibody raised against LEPR. It has been selected for its ability to recognize LEPR in immunohistochemical staining and western blotting.
Purification:	Antigen-specific affinity chromatography followed by Protein A affinity chromatography

Target Details

Target:	Leptin Receptor (LEPR)
---------	------------------------

Target Details

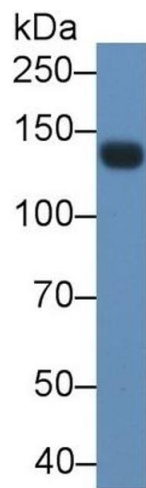
Alternative Name:	Leptin Receptor (LEPR Products)
Background:	CD295, LEPR, OBR, LR
Pathways:	JAK-STAT Signaling , AMPK Signaling , Feeding Behaviour

Application Details

Application Notes:	Western blotting: 0.5-2 µg/mL 1:500-2000 Immunohistochemistry: 5-20 µg/mL 1:50-200 Immunocytochemistry: 5-20 µg/mL 1:50-200 Optimal working dilutions must be determined by end user.
Comment:	The thermal stability is described by the loss rate. The loss rate was determined by accelerated thermal degradation test, that is, incubate the protein at 37°C for 48h, and no obvious degradation and precipitation were observed. The loss rate is less than 5% within the expiration date under appropriate storage condition.
Restrictions:	For Research Use only

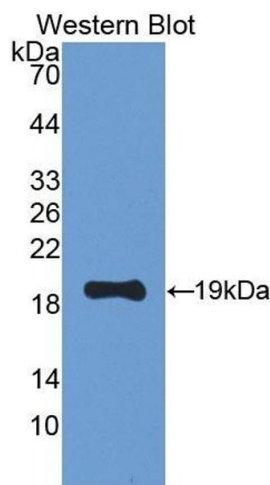
Handling

Format:	Liquid
Buffer:	PBS, pH 7.4, containing 0.02 % Sodium azide, 50 % glycerol.
Preservative:	Sodium azide
Precaution of Use:	This product contains Sodium azide: a POISONOUS AND HAZARDOUS SUBSTANCE which should be handled by trained staff only.
Storage:	4 °C,-20 °C
Storage Comment:	Store at 4°C for frequent use. Stored at -20°C in a manual defrost freezer for two year without detectable loss of activity. Avoid repeated freeze-thaw cycles.
Expiry Date:	24 months



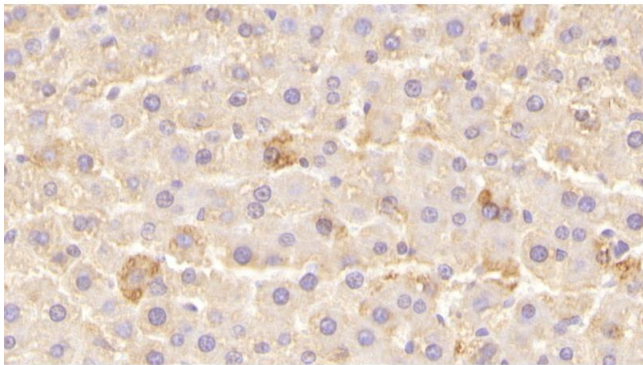
Western Blotting

Image 1. Detection of LEPR in Rat Serum using Polyclonal Antibody to Leptin Receptor (LEPR)



Western Blotting

Image 2. Detection of Recombinant LEPR, Rat using Polyclonal Antibody to Leptin Receptor (LEPR)



Immunohistochemistry

Image 3. Detection of LEPR in Rat Liver Tissue using Polyclonal Antibody to Leptin Receptor (LEPR)

Please check the [product details page](#) for more images. Overall 6 images are available for ABIN7430879.