



Datasheet for ABIN7430912
anti-CCL8 antibody (AA 1-99)



[Go to Product page](#)

3 Images

Overview

| | |
|----------------------|--|
| Quantity: | 100 µL |
| Target: | CCL8 |
| Binding Specificity: | AA 1-99 |
| Reactivity: | Human |
| Host: | Rabbit |
| Clonality: | Polyclonal |
| Conjugate: | This CCL8 antibody is un-conjugated |
| Application: | Western Blotting (WB), Immunohistochemistry (IHC), Immunoprecipitation (IP), Immunocytochemistry (ICC) |

Product Details

| | |
|-------------------|--|
| Purpose: | Polyclonal Antibody to Monocyte Chemotactic Protein 2 (MCP2) |
| Immunogen: | Recombinant Monocyte Chemotactic Protein 2 (MCP2) corresponding to Met1~Pro99 (Accession # P80075) |
| Isotype: | IgG |
| Specificity: | The antibody is a rabbit polyclonal antibody raised against MCP2. It has been selected for its ability to recognize MCP2 in immunohistochemical staining and western blotting. |
| Cross-Reactivity: | Mouse, Rat |
| Purification: | Antigen-specific affinity chromatography followed by Protein A affinity chromatography |

Target Details

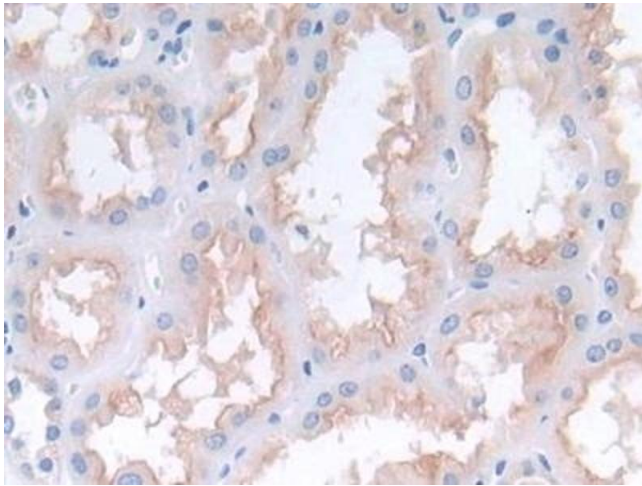
| | |
|-------------------|--|
| Target: | CCL8 |
| Alternative Name: | Monocyte Chemotactic Protein 2 (CCL8 Products) |
| Background: | CCL8, CCL-8, SCYA8, MCP-2, HC14, Chemokine C-C-Motif Ligand 8, Small Inducible Cytokine Subfamily A(Cys-Cys)Member 8, Monocyte Chemoattractant Protein 2 |

Application Details

| | |
|--------------------|---|
| Application Notes: | Western blotting: 0.5-2 µg/mL 1:200-800 Immunohistochemistry: 5-20 µg/mL 1:20-80 Immunocytochemistry: 5-20 µg/mL 1:20-80 Optimal working dilutions must be determined by end user. |
| Comment: | The thermal stability is described by the loss rate. The loss rate was determined by accelerated thermal degradation test, that is, incubate the protein at 37°C for 48h, and no obvious degradation and precipitation were observed. The loss rate is less than 5% within the expiration date under appropriate storage condition. |
| Restrictions: | For Research Use only |

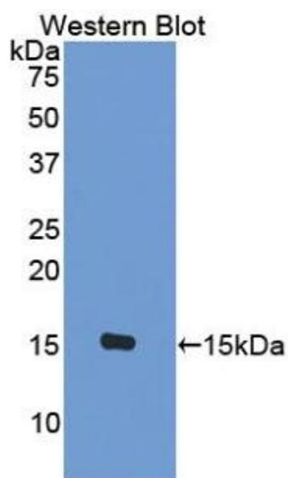
Handling

| | |
|--------------------|---|
| Format: | Liquid |
| Buffer: | 0.01M PBS, pH 7.4, containing 0.05 % Proclin-300, 50 % glycerol. |
| Preservative: | ProClin |
| Precaution of Use: | This product contains ProClin: a POISONOUS AND HAZARDOUS SUBSTANCE which should be handled by trained staff only. |
| Storage: | 4 °C, -20 °C |
| Storage Comment: | Store at 4°C for frequent use. Stored at -20°C in a manual defrost freezer for two year without detectable loss of activity. Avoid repeated freeze-thaw cycles. |
| Expiry Date: | 24 months |



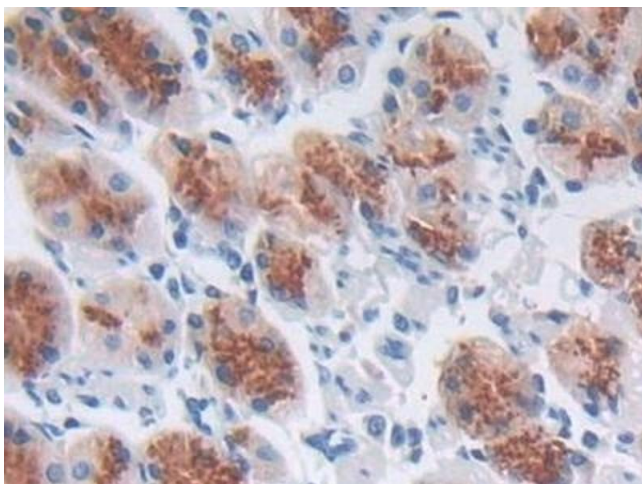
Immunohistochemistry

Image 1. Detection of MCP2 in Human Kidney Tissue using Polyclonal Antibody to Monocyte Chemotactic Protein 2 (MCP2)



Western Blotting

Image 2. Detection of Recombinant MCP2, Human using Polyclonal Antibody to Monocyte Chemotactic Protein 2 (MCP2)



Immunohistochemistry

Image 3. Detection of MCP2 in Human Stomach Tissue using Polyclonal Antibody to Monocyte Chemotactic Protein 2 (MCP2)