

Datasheet for ABIN7430951  
**anti-CCL20 antibody (AA 24-97)**[Go to Product page](#)

## 3 Images

## Overview

Quantity:	100 µL
Target:	CCL20
Binding Specificity:	AA 24-97
Reactivity:	Mouse
Host:	Rabbit
Clonality:	Polyclonal
Conjugate:	This CCL20 antibody is un-conjugated
Application:	Western Blotting (WB), Immunohistochemistry (IHC), Immunoprecipitation (IP), Immunocytochemistry (ICC)

## Product Details

Purpose:	Polyclonal Antibody to Macrophage Inflammatory Protein 3 Alpha (MIP3a)
Immunogen:	Recombinant Macrophage Inflammatory Protein 3 Alpha (MIP3a) corresponding to Gln24~Met97 (Accession # O89093)
Isotype:	IgG
Specificity:	The antibody is a rabbit polyclonal antibody raised against MIP3a. It has been selected for its ability to recognize MIP3a in immunohistochemical staining and western blotting.
Purification:	Antigen-specific affinity chromatography followed by Protein A affinity chromatography

## Target Details

Target:	CCL20
---------	-------

## Target Details

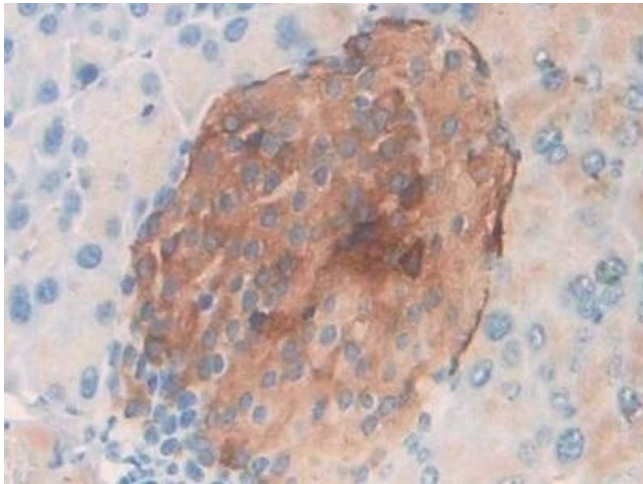
Alternative Name:	Macrophage Inflammatory Protein 3 Alpha ( <a href="#">CCL20 Products</a> )
Background:	CCL20, Ckb4, LARC, MIP3-A, SCYA20, ST38, Small Inducible Cytokine Subfamily A(Cys-Cys)Member 20, Beta-Chemokine Exodus-1, Liver And Activation-Regulated Chemokine
Pathways:	<a href="#">The Global Phosphorylation Landscape of SARS-CoV-2 Infection</a>

## Application Details

Application Notes:	Western blotting: 0.5-2 µg/mL 1:500-2000 Immunohistochemistry: 5-20 µg/mL 1:50-200 Immunocytochemistry: 5-20 µg/mL 1:50-200 Optimal working dilutions must be determined by end user.
Comment:	The thermal stability is described by the loss rate. The loss rate was determined by accelerated thermal degradation test, that is, incubate the protein at 37°C for 48h, and no obvious degradation and precipitation were observed. The loss rate is less than 5% within the expiration date under appropriate storage condition.
Restrictions:	For Research Use only

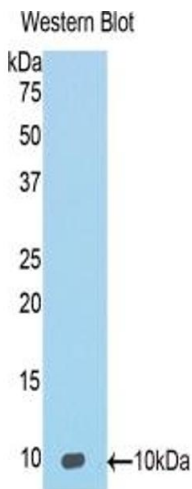
## Handling

Format:	Liquid
Buffer:	0.01M PBS, pH 7.4, containing 0.05 % Proclin-300, 50 % glycerol.
Preservative:	ProClin
Precaution of Use:	This product contains ProClin: a POISONOUS AND HAZARDOUS SUBSTANCE which should be handled by trained staff only.
Storage:	4 °C,-20 °C
Storage Comment:	Store at 4°C for frequent use. Stored at -20°C in a manual defrost freezer for two year without detectable loss of activity. Avoid repeated freeze-thaw cycles.
Expiry Date:	24 months



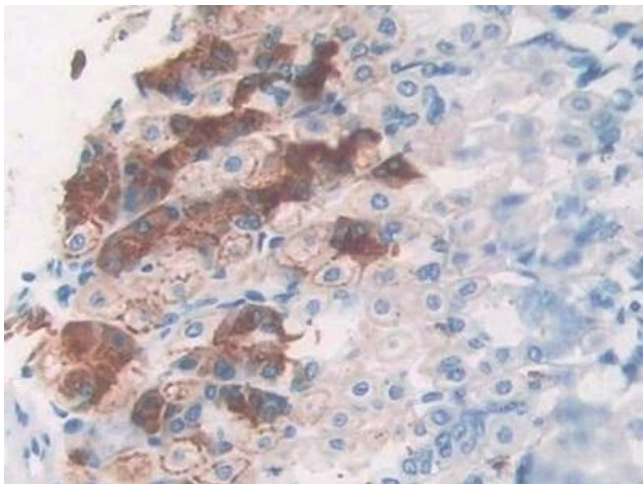
#### Immunohistochemistry

**Image 1.** Detection of MIP3a in Mouse Pancreas Tissue using Polyclonal Antibody to Macrophage Inflammatory Protein 3 Alpha (MIP3a)



#### Western Blotting

**Image 2.** Detection of Recombinant MIP3a, Mouse using Polyclonal Antibody to Macrophage Inflammatory Protein 3 Alpha (MIP3a)



#### Immunohistochemistry

**Image 3.** Detection of MIP3a in Mouse Stomach Tissue using Polyclonal Antibody to Macrophage Inflammatory Protein 3 Alpha (MIP3a)