

Datasheet for ABIN7431074  
**anti-PLGF antibody (AA 24-158)**[Go to Product page](#)

## 2 Images

## Overview

Quantity:	100 µL
Target:	PLGF (PGF)
Binding Specificity:	AA 24-158
Reactivity:	Rat
Host:	Rabbit
Clonality:	Polyclonal
Conjugate:	This PLGF antibody is un-conjugated
Application:	Western Blotting (WB), Immunohistochemistry (IHC), Immunoprecipitation (IP), Immunocytochemistry (ICC)

## Product Details

Purpose:	Polyclonal Antibody to Placenta Growth Factor (PLGF)
Immunogen:	Recombinant Placenta Growth Factor (PLGF) corresponding to Ala24~Leu158 (Accession # Q63434)
Isotype:	IgG
Specificity:	The antibody is a rabbit polyclonal antibody raised against PLGF. It has been selected for its ability to recognize PLGF in immunohistochemical staining and western blotting.
Purification:	Antigen-specific affinity chromatography followed by Protein A affinity chromatography

## Target Details

Target:	PLGF (PGF)
---------	------------

## Target Details

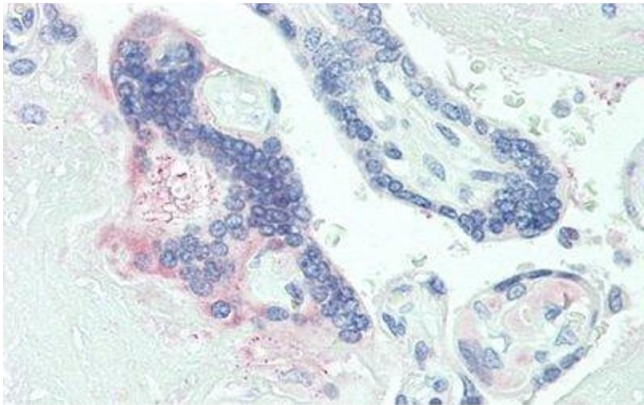
Alternative Name:	Placenta Growth Factor ( <a href="#">PGF Products</a> )
Background:	PlGF2, PGF, PGFL, Placental Growth Factor-Like, Vascular Endothelial Growth Factor-Related Protein
Pathways:	<a href="#">VEGFR1 Specific Signals</a>

## Application Details

Application Notes:	Western blotting: 0.5-2 µg/mL Immunohistochemistry: 5-20 µg/mL Immunocytochemistry: 5-20 µg/mL Optimal working dilutions must be determined by end user.
Comment:	The thermal stability is described by the loss rate. The loss rate was determined by accelerated thermal degradation test, that is, incubate the protein at 37°C for 48h, and no obvious degradation and precipitation were observed. The loss rate is less than 5% within the expiration date under appropriate storage condition.
Restrictions:	For Research Use only

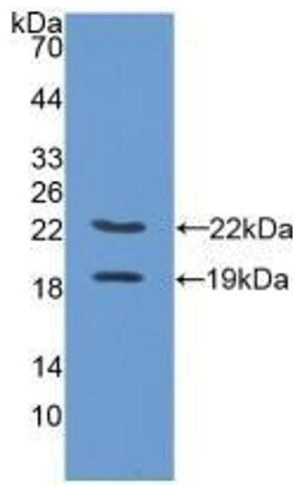
## Handling

Format:	Liquid
Buffer:	PBS, pH 7.4, containing 0.02 % Sodium azide, 50 % glycerol.
Preservative:	Sodium azide
Precaution of Use:	This product contains Sodium azide: a POISONOUS AND HAZARDOUS SUBSTANCE which should be handled by trained staff only.
Storage:	4 °C, -20 °C
Storage Comment:	Store at 4°C for frequent use. Stored at -20°C in a manual defrost freezer for two year without detectable loss of activity. Avoid repeated freeze-thaw cycles.
Expiry Date:	24 months



Immunohistochemistry

**Image 1.** Detection of PLGF in Human Placenta Tissue using Polyclonal Antibody to Placenta Growth Factor (PLGF)



Western Blotting

**Image 2.** Detection of Recombinant PLGF, Rat using Polyclonal Antibody to Placenta Growth Factor (PLGF)