

Datasheet for ABIN7431104  
**anti-KIT Ligand antibody (AA 24-219)**



[Go to Product page](#)

1 Image

## Overview

Quantity:	100 µL
Target:	KIT Ligand (KITLG)
Binding Specificity:	AA 24-219
Reactivity:	Mouse
Host:	Rabbit
Clonality:	Polyclonal
Conjugate:	This KIT Ligand antibody is un-conjugated
Application:	Western Blotting (WB), Immunohistochemistry (IHC), Immunocytochemistry (ICC), Immunoprecipitation (IP)

## Product Details

Purpose:	Polyclonal Antibody to Stem Cell Factor (SCF)
Immunogen:	Recombinant Stem Cell Factor (SCF) corresponding to Lys24~Ala219 with N-terminal His Tag
Isotype:	IgG
Specificity:	The antibody is a rabbit polyclonal antibody raised against SCF. It has been selected for its ability to recognize SCF in immunohistochemical staining and western blotting.
Purification:	Antigen-specific affinity chromatography followed by Protein A affinity chromatography

## Target Details

Target:	KIT Ligand (KITLG)
---------	--------------------

## Target Details

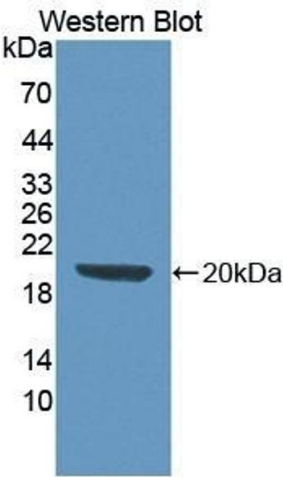
Alternative Name:	Stem Cell Factor ( <a href="#">KITLG Products</a> )
Background:	KITLG, MGF, SF, KL1, Kitl, FPH2, Kit-Ligand, Steel Factor, Mast Cell Growth Factor, Steel factor, Familial Progressive Hyperpigmentation 2
UniProt:	<a href="#">P20826</a>
Pathways:	<a href="#">RTK Signaling</a> , <a href="#">Fc-epsilon Receptor Signaling Pathway</a> , <a href="#">EGFR Signaling Pathway</a> , <a href="#">Neurotrophin Signaling Pathway</a>

## Application Details

Application Notes:	Western blotting: 0.01-2 µg/mL, Immunohistochemistry: 5-20 µg/mL, Immunocytochemistry: 5-20 µg/mL, Optimal working dilutions must be determined by end user.
Comment:	The thermal stability is described by the loss rate. The loss rate was determined by accelerated thermal degradation test, that is, incubate the protein at 37°C for 48h, and no obvious degradation and precipitation were observed. The loss rate is less than 5% within the expiration date under appropriate storage condition.
Restrictions:	For Research Use only

## Handling

Format:	Liquid
Concentration:	0.5 mg/mL
Buffer:	PBS, pH 7.4, containing 0.02 % Sodium azide, 50 % glycerol.
Preservative:	Sodium azide
Precaution of Use:	This product contains Sodium azide: a POISONOUS AND HAZARDOUS SUBSTANCE which should be handled by trained staff only.
Storage:	4 °C, -20 °C
Storage Comment:	Store at 4°C for frequent use. Stored at -20°C in a manual defrost freezer for two year without detectable loss of activity. Avoid repeated freeze-thaw cycles.
Expiry Date:	24 months



Western Blotting

**Image 1.** Detection of Recombinant SCF, Mouse using Polyclonal Antibody to Stem Cell Factor (SCF)