

Datasheet for ABIN7431215

**anti-Prostate Specific Antigen antibody (AA 39-261)****3** Images[Go to Product page](#)

## Overview

Quantity:	100 µL
Target:	Prostate Specific Antigen (PSA)
Binding Specificity:	AA 39-261
Reactivity:	Mouse
Host:	Rabbit
Clonality:	Polyclonal
Conjugate:	This Prostate Specific Antigen antibody is un-conjugated
Application:	Western Blotting (WB), Immunohistochemistry (IHC), Immunoprecipitation (IP), Immunocytochemistry (ICC)

## Product Details

Purpose:	Polyclonal Antibody to Prostate Specific Antigen (PSA)
Immunogen:	Recombinant Prostate Specific Antigen (PSA) corresponding to His39~Pro261 with N-terminal His Tag
Isotype:	IgG
Specificity:	The antibody is a rabbit polyclonal antibody raised against PSA. It has been selected for its ability to recognize PSA in immunohistochemical staining and western blotting.
Cross-Reactivity:	Pig, Rat
Purification:	Antigen-specific affinity chromatography followed by Protein A affinity chromatography

## Target Details

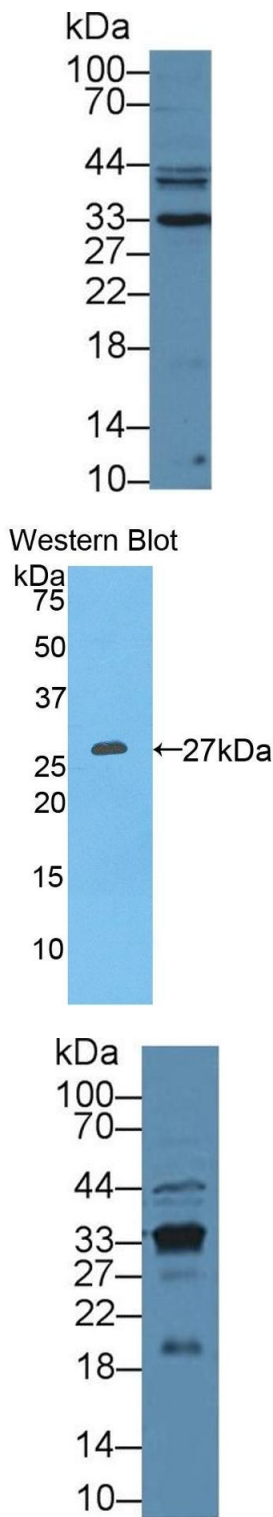
Target:	Prostate Specific Antigen (PSA)
Alternative Name:	Prostate Specific Antigen ( <a href="#">PSA Products</a> )
Background:	KLK3, APS, KLK2A1, HK3, KLKB1, Semin, Prostate Specific Antigen, Kallikrein-Related Peptidase 3, Semenogelase, g-Seminoprotein, P-30 Antigen, Plasma kallikrein
Pathways:	<a href="#">Complement System</a>

## Application Details

Application Notes:	Western blotting: 0.5-3 µg/mL Immunohistochemistry: 5-30 µg/mL Immunocytochemistry: 5-30 µg/mL Optimal working dilutions must be determined by end user.
Comment:	The thermal stability is described by the loss rate. The loss rate was determined by accelerated thermal degradation test, that is, incubate the protein at 37°C for 48h, and no obvious degradation and precipitation were observed. The loss rate is less than 5% within the expiration date under appropriate storage condition.
Restrictions:	For Research Use only

## Handling

Format:	Liquid
Buffer:	PBS, pH 7.4, containing 0.02 % Sodium azide, 50 % glycerol.
Preservative:	Sodium azide
Precaution of Use:	This product contains Sodium azide: a POISONOUS AND HAZARDOUS SUBSTANCE which should be handled by trained staff only.
Storage:	4 °C, -20 °C
Storage Comment:	Store at 4°C for frequent use. Stored at -20°C in a manual defrost freezer for two year without detectable loss of activity. Avoid repeated freeze-thaw cycles.
Expiry Date:	24 months



**Western Blotting**

**Image 1.** Detection of PSA in Mouse Liver lysate using Polyclonal Antibody to Prostate Specific Antigen (PSA)

**Western Blotting**

**Image 2.** Detection of Recombinant KLK3, Mouse using Polyclonal Antibody to Prostate Specific Antigen (PSA)

**Western Blotting**

**Image 3.** Detection of PSA in Mouse Kidney lysate using Polyclonal Antibody to Prostate Specific Antigen (PSA)