

Datasheet for ABIN7431227
anti-alpha 2 Antiplasmin antibody

3 Images

[Go to Product page](#)

Overview

Quantity:	100 µL
Target:	alpha 2 Antiplasmin (SERPINF2)
Reactivity:	Human
Host:	Rabbit
Clonality:	Polyclonal
Conjugate:	This alpha 2 Antiplasmin antibody is un-conjugated
Application:	Western Blotting (WB), Immunohistochemistry (IHC), Immunoprecipitation (IP), Immunocytochemistry (ICC)

Product Details

Purpose:	Polyclonal Antibody to Alpha 2-Antiplasmin (a2PI)
Immunogen:	Recombinant Alpha 2-Antiplasmin (a2PI) corresponding to N-terminal His Tag
Isotype:	IgG
Specificity:	The antibody is a rabbit polyclonal antibody raised against a2PI. It has been selected for its ability to recognize a2PI in immunohistochemical staining and western blotting.
Cross-Reactivity:	Mouse, Pig
Purification:	Antigen-specific affinity chromatography followed by Protein A affinity chromatography

Target Details

Target:	alpha 2 Antiplasmin (SERPINF2)
---------	--------------------------------

Target Details

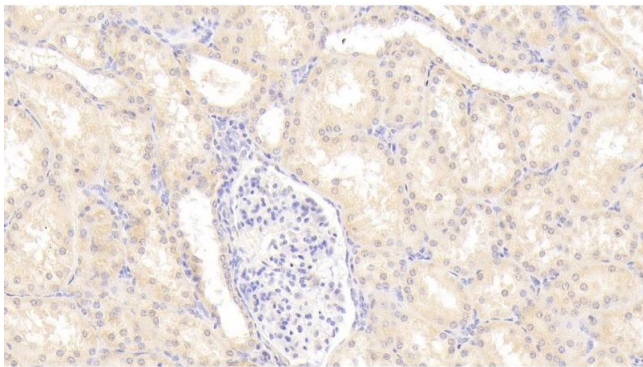
Alternative Name:	Alpha 2-Antiplasmin (SERPINF2 Products)
Background:	SERPINF2, AAP, A2-PI, API, PLI, A2AP, Alpha-2-Plasmin Inhibitor, Serpin Peptidase Inhibitor Clade F Member 2, Pigment Epithelium Derived Factor
Pathways:	Regulation of Systemic Arterial Blood Pressure by Hormones

Application Details

Application Notes:	Western blotting: 0.5-2 µg/mL Immunocytochemistry in formalin fixed cells: 5-20 µg/mL Immunohistochemistry in formalin fixed frozen section: 5-20 µg/mL Immunohistochemistry in paraffin section: 5-20 µg/mL Enzyme-linked Immunosorbent Assay: 0.05-2 µg/mL Optimal working dilutions must be determined by end user.
Comment:	The thermal stability is described by the loss rate. The loss rate was determined by accelerated thermal degradation test, that is, incubate the protein at 37°C for 48h, and no obvious degradation and precipitation were observed. The loss rate is less than 5% within the expiration date under appropriate storage condition.
Restrictions:	For Research Use only

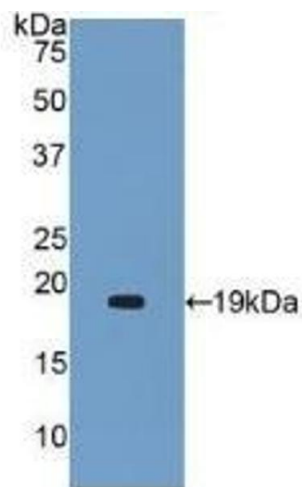
Handling

Format:	Liquid
Buffer:	0.01M PBS, pH 7.4, containing 0.05 % Proclin-300, 50 % glycerol.
Preservative:	ProClin
Precaution of Use:	This product contains ProClin: a POISONOUS AND HAZARDOUS SUBSTANCE which should be handled by trained staff only.
Storage:	4 °C, -20 °C
Storage Comment:	Store at 4°C for frequent use. Stored at -20°C in a manual defrost freezer for two year without detectable loss of activity. Avoid repeated freeze-thaw cycles.
Expiry Date:	24 months



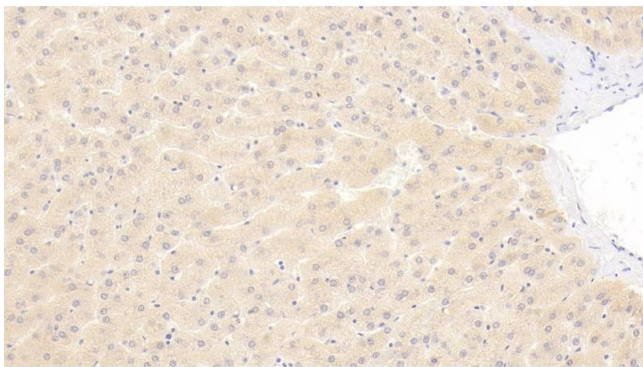
Immunohistochemistry

Image 1. Detection of a2PI in Human Kidney Tissue using Polyclonal Antibody to Alpha 2-Antiplasmin (a2PI)



Western Blotting

Image 2. Detection of Recombinant a2PI, Human using Polyclonal Antibody to Alpha 2-Antiplasmin (a2PI)



Immunohistochemistry

Image 3. Detection of a2PI in Human Liver Tissue using Polyclonal Antibody to Alpha 2-Antiplasmin (a2PI)