

Datasheet for ABIN7431245
anti-PGC antibody (AA 17-392)

3 Images

[Go to Product page](#)

Overview

Quantity:	100 µL
Target:	PGC
Binding Specificity:	AA 17-392
Reactivity:	Mouse
Host:	Rabbit
Clonality:	Polyclonal
Conjugate:	This PGC antibody is un-conjugated
Application:	Western Blotting (WB), Immunohistochemistry (IHC), Immunoprecipitation (IP), Immunocytochemistry (ICC)

Product Details

Purpose:	Polyclonal Antibody to Pepsinogen C (PGC)
Immunogen:	Recombinant Pepsinogen C (PGC) corresponding to Ala17~Val392 with N-terminal His and GST Tag
Isotype:	IgG
Specificity:	The antibody is a rabbit polyclonal antibody raised against PGC. It has been selected for its ability to recognize PGC in immunohistochemical staining and western blotting.
Cross-Reactivity:	Rat
Purification:	Antigen-specific affinity chromatography followed by Protein A affinity chromatography

Target Details

Target:	PGC
Alternative Name:	Pepsinogen C (PGC Products)
Background:	PG-C, Progastricsin, Gastricsin

Application Details

Application Notes:	Western blotting: 0.5-2 µg/mL 1:500-2000 Immunohistochemistry: 5-20 µg/mL 1:50-200 Immunocytochemistry: 5-20 µg/mL 1:50-200 Optimal working dilutions must be determined by end user.
Comment:	The thermal stability is described by the loss rate. The loss rate was determined by accelerated thermal degradation test, that is, incubate the protein at 37°C for 48h, and no obvious degradation and precipitation were observed. The loss rate is less than 5% within the expiration date under appropriate storage condition.
Restrictions:	For Research Use only

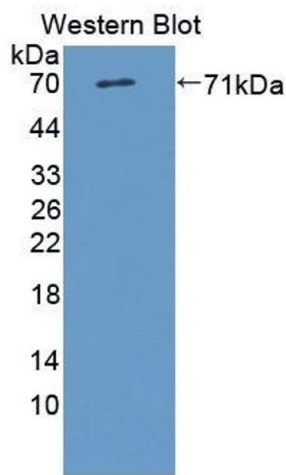
Handling

Format:	Liquid
Buffer:	0.01M PBS, pH 7.4, containing 0.05 % Proclin-300, 50 % glycerol.
Preservative:	ProClin
Precaution of Use:	This product contains ProClin: a POISONOUS AND HAZARDOUS SUBSTANCE which should be handled by trained staff only.
Storage:	4 °C,-20 °C
Storage Comment:	Store at 4°C for frequent use. Stored at -20°C in a manual defrost freezer for two year without detectable loss of activity. Avoid repeated freeze-thaw cycles.
Expiry Date:	24 months



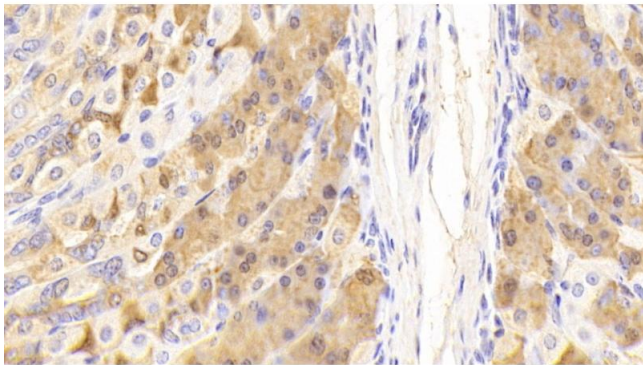
Western Blotting

Image 1. Detection of PGC in Rat Stomach lysate using Polyclonal Antibody to Pepsinogen C (PGC)



Western Blotting

Image 2. Detection of Recombinant PGC, Mouse using Polyclonal Antibody to Pepsinogen C (PGC)



Immunohistochemistry

Image 3. Detection of PGC in Mouse Stomach Tissue using Polyclonal Antibody to Pepsinogen C (PGC)