

Datasheet for ABIN7431290
anti-GLB1 antibody (AA 192-432)[Go to Product page](#)

3 Images

Overview

Quantity:	100 µL
Target:	GLB1
Binding Specificity:	AA 192-432
Reactivity:	Mouse
Host:	Rabbit
Clonality:	Polyclonal
Conjugate:	This GLB1 antibody is un-conjugated
Application:	Western Blotting (WB), Immunohistochemistry (IHC), Immunoprecipitation (IP), Immunocytochemistry (ICC)

Product Details

Purpose:	Polyclonal Antibody to Galactosidase Beta (GLb)
Immunogen:	Recombinant Galactosidase Beta (GLb) corresponding to Ser192~Pro432 (Accession # P23780)
Isotype:	IgG
Specificity:	The antibody is a rabbit polyclonal antibody raised against GLb. It has been selected for its ability to recognize GLb in immunohistochemical staining and western blotting.
Purification:	Antigen-specific affinity chromatography followed by Protein A affinity chromatography

Target Details

Target:	GLB1
---------	------

Target Details

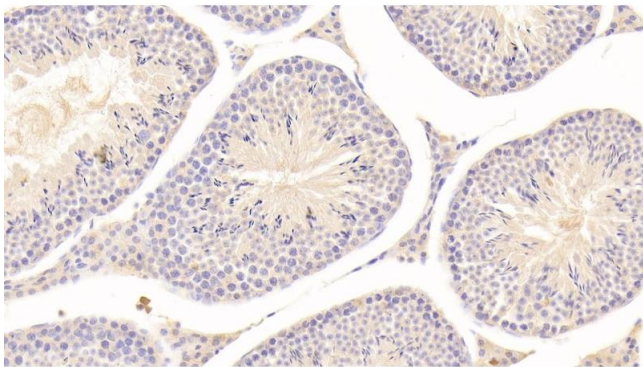
Alternative Name:	Galactosidase Beta (GLB1 Products)
Background:	GL-B, b-GAL, bGAL, ELNR1, EBP, GLB1, Lactase, Elastin Receptor 1,67 kDa, Elastin Receptor 1(67kD), Acid Beta-Galactosidase
Pathways:	Glycosaminoglycan Metabolic Process

Application Details

Application Notes:	Western blotting: 0.5-2 µg/mL Immunohistochemistry: 5-20 µg/mL Immunocytochemistry: 5-20 µg/mL Optimal working dilutions must be determined by end user.
Comment:	The thermal stability is described by the loss rate. The loss rate was determined by accelerated thermal degradation test, that is, incubate the protein at 37°C for 48h, and no obvious degradation and precipitation were observed. The loss rate is less than 5% within the expiration date under appropriate storage condition.
Restrictions:	For Research Use only

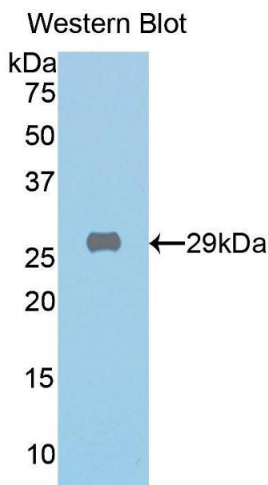
Handling

Format:	Liquid
Buffer:	0.01M PBS, pH 7.4, containing 0.05 % Proclin-300, 50 % glycerol.
Preservative:	ProClin
Precaution of Use:	This product contains ProClin: a POISONOUS AND HAZARDOUS SUBSTANCE which should be handled by trained staff only.
Storage:	4 °C, -20 °C
Storage Comment:	Store at 4°C for frequent use. Stored at -20°C in a manual defrost freezer for two year without detectable loss of activity. Avoid repeated freeze-thaw cycles.
Expiry Date:	24 months



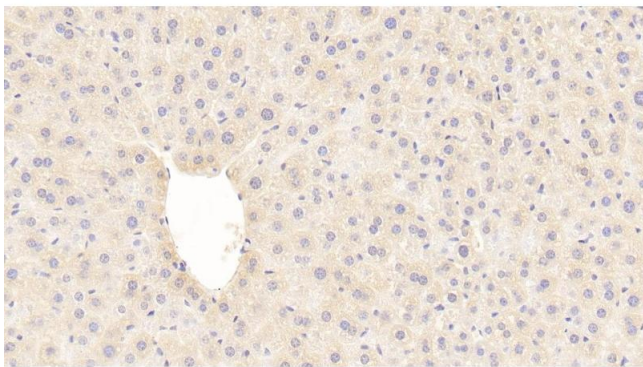
Immunohistochemistry

Image 1. Detection of GLb in Mouse Testis Tissue using Polyclonal Antibody to Galactosidase Beta (GLb)



Western Blotting

Image 2. Detection of recombinant GLb using Polyclonal Antibody to Galactosidase Beta (GLb)



Immunohistochemistry

Image 3. Detection of GLb in Mouse Liver Tissue using Polyclonal Antibody to Galactosidase Beta (GLb)