

Datasheet for ABIN7431305
anti-PKLR antibody (AA 114-323)

6 Images

[Go to Product page](#)

Overview

Quantity:	100 µL
Target:	PKLR
Binding Specificity:	AA 114-323
Reactivity:	Mouse
Host:	Rabbit
Clonality:	Polyclonal
Conjugate:	This PKLR antibody is un-conjugated
Application:	Western Blotting (WB), Immunohistochemistry (IHC), Immunoprecipitation (IP), Immunocytochemistry (ICC)

Product Details

Purpose:	Polyclonal Antibody to Pyruvate kinase isozymes R/L (PKLR)
Immunogen:	Recombinant Pyruvate kinase isozymes R/L (PKLR) corresponding to Ile114~Phe323 (Accession # P53657)
Isotype:	IgG
Specificity:	The antibody is a rabbit polyclonal antibody raised against PKLR. It has been selected for its ability to recognize PKLR in immunohistochemical staining and western blotting.
Purification:	Antigen-specific affinity chromatography followed by Protein A affinity chromatography

Target Details

Target:	PKLR
---------	------

Target Details

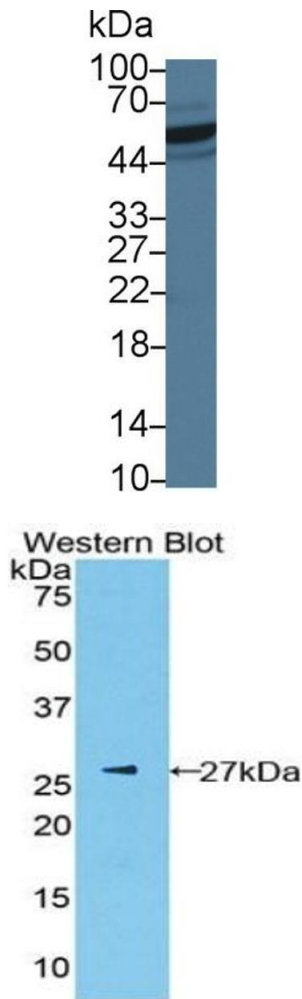
Alternative Name:	Pyruvate kinase isozymes R/L (PKLR Products)
Background:	PK, PyK, PK1, PKL, Pyruvate Kinase Isozymes R/L, Glutamic--pyruvic transaminase 1, R-type/L-type pyruvate kinase, Red cell/liver pyruvate kinase
Pathways:	Ribonucleoside Biosynthetic Process

Application Details

Application Notes:	Western blotting: 0.5-2 µg/mL 1:220-900 Immunohistochemistry: 5-20 µg/mL 1:22-90 Immunocytochemistry: 5-20 µg/mL 1:22-90 Optimal working dilutions must be determined by end user.
Comment:	The thermal stability is described by the loss rate. The loss rate was determined by accelerated thermal degradation test, that is, incubate the protein at 37°C for 48h, and no obvious degradation and precipitation were observed. The loss rate is less than 5% within the expiration date under appropriate storage condition.
Restrictions:	For Research Use only

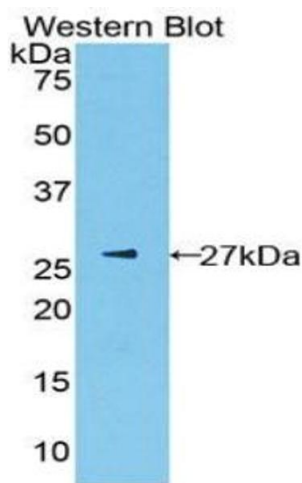
Handling

Format:	Liquid
Buffer:	PBS, pH 7.4, containing 0.02 % Sodium azide, 50 % glycerol.
Preservative:	Sodium azide
Precaution of Use:	This product contains Sodium azide: a POISONOUS AND HAZARDOUS SUBSTANCE which should be handled by trained staff only.
Storage:	4 °C, -20 °C
Storage Comment:	Store at 4°C for frequent use. Stored at -20°C in a manual defrost freezer for two year without detectable loss of activity. Avoid repeated freeze-thaw cycles.
Expiry Date:	24 months



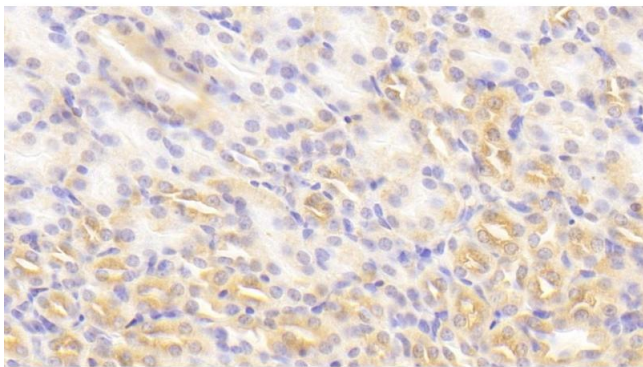
Western Blotting

Image 1. Detection of PKLR in Mouse Cerebrum lysate using Polyclonal Antibody to Pyruvate kinase isozymes R/L (PKLR)



Western Blotting

Image 2. Detection of Recombinant PK, Mouse using Polyclonal Antibody to Pyruvate kinase isozymes R/L (PKLR)



Immunohistochemistry

Image 3. Detection of PKLR in Mouse Kidney Tissue using Polyclonal Antibody to Pyruvate kinase isozymes R/L (PKLR)

Please check the [product details page](#) for more images. Overall 6 images are available for ABIN7431305.