

Datasheet for ABIN7431344
anti-Adrenomedullin antibody (AA 22-147)[Go to Product page](#)

4 Images

Overview

Quantity:	100 µL
Target:	Adrenomedullin (ADM)
Binding Specificity:	AA 22-147
Reactivity:	Human
Host:	Rabbit
Clonality:	Polyclonal
Conjugate:	This Adrenomedullin antibody is un-conjugated
Application:	Western Blotting (WB), ELISA, Immunocytochemistry (ICC), Immunohistochemistry (Paraffin-embedded Sections) (IHC (p)), Immunohistochemistry (Frozen Sections) (IHC (fro))

Product Details

Purpose:	Polyclonal Antibody to Adrenomedullin (ADM)
Immunogen:	Recombinant Adrenomedullin (ADM) corresponding to Ala22~Gly147 with N-terminal His Tag
Isotype:	IgG
Specificity:	The antibody is a rabbit polyclonal antibody raised against ADM. It has been selected for its ability to recognize ADM in immunohistochemical staining and western blotting.
Cross-Reactivity:	Mouse, Rat
Purification:	Antigen-specific affinity chromatography followed by Protein A affinity chromatography

Target Details

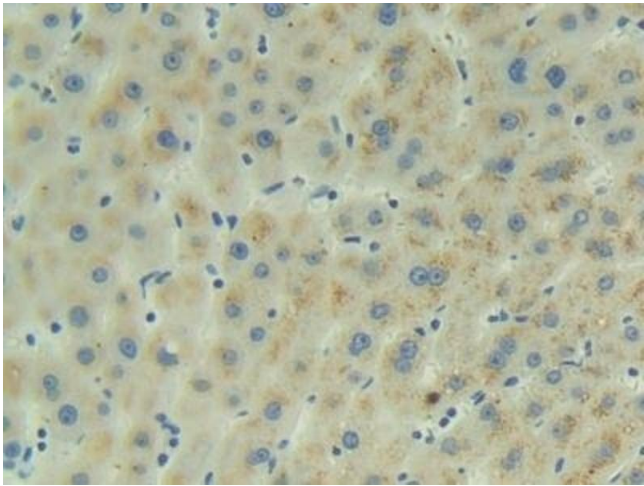
Target:	Adrenomedullin (ADM)
Alternative Name:	Adrenomedullin (ADM Products)
Target Type:	Hormone
Background:	AM, PAMP, Proadrenomedullin N-20 terminal peptide, ProAM N-terminal 20 peptide
Pathways:	Hormone Transport , Hormone Activity , C21-Steroid Hormone Metabolic Process , cAMP Metabolic Process , Myometrial Relaxation and Contraction , Regulation of G-Protein Coupled Receptor Protein Signaling , Tube Formation

Application Details

Application Notes:	Western blotting: 0.5-2 µg/mL Immunohistochemistry: 5-20 µg/mL Immunocytochemistry: 5-20 µg/mL Optimal working dilutions must be determined by end user.
Comment:	The thermal stability is described by the loss rate. The loss rate was determined by accelerated thermal degradation test, that is, incubate the protein at 37°C for 48h, and no obvious degradation and precipitation were observed. The loss rate is less than 5% within the expiration date under appropriate storage condition.
Restrictions:	For Research Use only

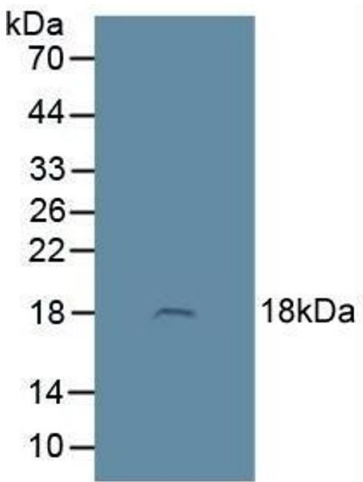
Handling

Format:	Liquid
Buffer:	0.01M PBS, pH 7.4, containing 0.05 % Proclin-300, 50 % glycerol.
Preservative:	ProClin
Precaution of Use:	This product contains ProClin: a POISONOUS AND HAZARDOUS SUBSTANCE which should be handled by trained staff only.
Storage:	4 °C,-20 °C
Storage Comment:	Store at 4°C for frequent use. Stored at -20°C in a manual defrost freezer for two year without detectable loss of activity. Avoid repeated freeze-thaw cycles.
Expiry Date:	24 months



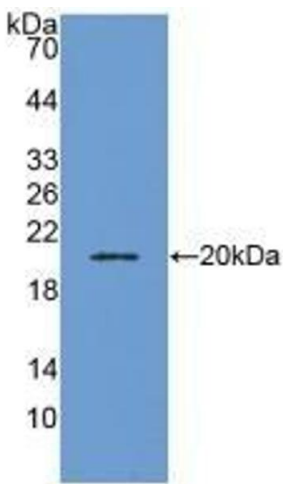
Immunohistochemistry

Image 1. Detection of ADM in Human Liver Tissue using Polyclonal Antibody to Adrenomedullin (ADM)



Western Blotting

Image 2. Detection of ADM in Rat Brain Tissue using Polyclonal Antibody to Adrenomedullin (ADM)



Western Blotting

Image 3. Detection of Recombinant ADM, Human using Polyclonal Antibody to Adrenomedullin (ADM)

Please check the [product details page](#) for more images. Overall 4 images are available for ABIN7431344.