

Datasheet for ABIN7431425  
**anti-PKC eta antibody (AA 355-614)**[Go to Product page](#)

## 1 Image

## Overview

Quantity:	100 µL
Target:	PKC eta (PRKCH)
Binding Specificity:	AA 355-614
Reactivity:	Human
Host:	Rabbit
Clonality:	Polyclonal
Conjugate:	This PKC eta antibody is un-conjugated
Application:	Western Blotting (WB), ELISA, Immunohistochemistry (Paraffin-embedded Sections) (IHC (p)), Immunocytochemistry (ICC), Immunohistochemistry (Frozen Sections) (IHC (fro))

## Product Details

Purpose:	Polyclonal Antibody to Protein Kinase C Eta (PKCh)
Immunogen:	Recombinant Protein Kinase C Eta (PKCh) corresponding to Phe355~Phe614 (Accession # P24723)
Isotype:	IgG
Specificity:	The antibody is a rabbit polyclonal antibody raised against PKCh. It has been selected for its ability to recognize PKCh in immunohistochemical staining and western blotting.
Cross-Reactivity:	Mouse, Rat
Purification:	Antigen-specific affinity chromatography followed by Protein A affinity chromatography

## Target Details

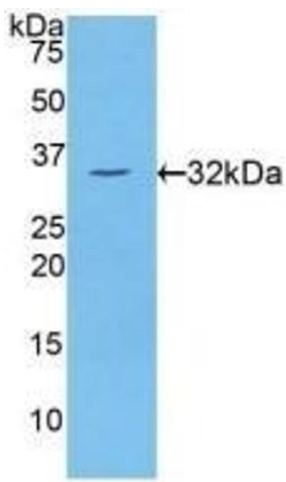
Target:	PKC eta (PRKCH)
Alternative Name:	Protein Kinase C Eta ( <a href="#">PRKCH Products</a> )
Background:	PRKCH, PRKC-H, PKC-L, PRKCL, NPKC-Eta
Pathways:	<a href="#">Myometrial Relaxation and Contraction</a> , <a href="#">Thromboxane A2 Receptor Signaling</a>

## Application Details

Application Notes:	Western blotting: 1-5 µg/mL Immunocytochemistry in formalin fixed cells: 5-20 µg/mL Immunohistochemistry in formalin fixed frozen section: 5-20 µg/mL Immunohistochemistry in paraffin section: 5-20 µg/mL Enzyme-linked Immunosorbent Assay: 0.05-2 µg/mL Optimal working dilutions must be determined by end user.
Comment:	The thermal stability is described by the loss rate. The loss rate was determined by accelerated thermal degradation test, that is, incubate the protein at 37°C for 48h, and no obvious degradation and precipitation were observed. The loss rate is less than 5% within the expiration date under appropriate storage condition.
Restrictions:	For Research Use only

## Handling

Format:	Liquid
Buffer:	0.01M PBS, pH 7.4, containing 0.05 % Proclin-300, 50 % glycerol.
Preservative:	ProClin
Precaution of Use:	This product contains ProClin: a POISONOUS AND HAZARDOUS SUBSTANCE which should be handled by trained staff only.
Storage:	4 °C,-20 °C
Storage Comment:	Store at 4°C for frequent use. Stored at -20°C in a manual defrost freezer for two year without detectable loss of activity. Avoid repeated freeze-thaw cycles.
Expiry Date:	24 months



Western Blotting

**Image 1.** Detection of Recombinant PKCh, Human using Polyclonal Antibody to Protein Kinase C Eta (PKCh)