

Datasheet for ABIN7431470
anti-CKMT1A antibody (AA 41-250)

5 Images

[Go to Product page](#)

Overview

Quantity:	100 µL
Target:	CKMT1A
Binding Specificity:	AA 41-250
Reactivity:	Human
Host:	Rabbit
Clonality:	Polyclonal
Conjugate:	This CKMT1A antibody is un-conjugated
Application:	Western Blotting (WB), Immunohistochemistry (IHC), Immunoprecipitation (IP), Immunocytochemistry (ICC)

Product Details

Purpose:	Polyclonal Antibody to Creatine Kinase, Mitochondrial 1A (CKMT1A)
Immunogen:	Recombinant Creatine Kinase, Mitochondrial 1A (CKMT1A) corresponding to Ser41~Ile250 (Accession # P12532)
Isotype:	IgG
Specificity:	The antibody is a rabbit polyclonal antibody raised against CKMT1A. It has been selected for its ability to recognize CKMT1A in immunohistochemical staining and western blotting.
Cross-Reactivity:	Mouse, Rat
Purification:	Antigen-specific affinity chromatography followed by Protein A affinity chromatography

Target Details

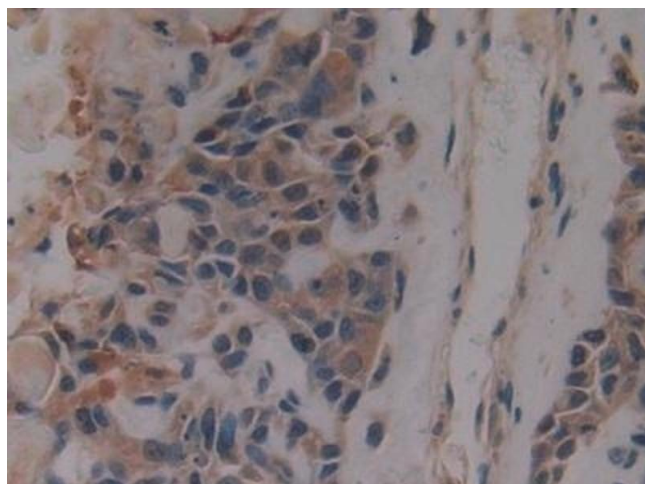
Target:	CKMT1A
Alternative Name:	Creatine Kinase, Mitochondrial 1A (CKMT1A Products)
Background:	CKMT, CKMT1-A, Mia-CK, U-MtCK, Creatine kinase U-type, mitochondrial, Ubiquitous mitochondrial creatine kinase, Acidic-type mitochondrial creatine kinase

Application Details

Application Notes:	Western blotting: 0.5-2 µg/mL Immunohistochemistry: 5-20 µg/mL Immunocytochemistry: 5-20 µg/mL Optimal working dilutions must be determined by end user.
Comment:	The thermal stability is described by the loss rate. The loss rate was determined by accelerated thermal degradation test, that is, incubate the protein at 37°C for 48h, and no obvious degradation and precipitation were observed. The loss rate is less than 5% within the expiration date under appropriate storage condition.
Restrictions:	For Research Use only

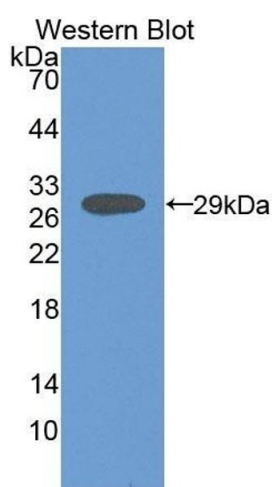
Handling

Format:	Liquid
Buffer:	0.01M PBS, pH 7.4, containing 0.05 % Proclin-300, 50 % glycerol.
Preservative:	ProClin
Precaution of Use:	This product contains ProClin: a POISONOUS AND HAZARDOUS SUBSTANCE which should be handled by trained staff only.
Storage:	4 °C, -20 °C
Storage Comment:	Store at 4°C for frequent use. Stored at -20°C in a manual defrost freezer for two year without detectable loss of activity. Avoid repeated freeze-thaw cycles.
Expiry Date:	24 months



Immunohistochemistry

Image 1. Detection of CKMT1A in Human Lung cancer Tissue using Polyclonal Antibody to Creatine Kinase, Mitochondrial 1A (CKMT1A)



Western Blotting

Image 2. Detection of Recombinant CKMT1A, Human using Polyclonal Antibody to Creatine Kinase, Mitochondrial 1A (CKMT1A)



Immunohistochemistry

Image 3. Detection of CKMT1A in Human Kidney Tissue using Polyclonal Antibody to Creatine Kinase, Mitochondrial 1A (CKMT1A)

Please check the [product details page](#) for more images. Overall 5 images are available for ABIN7431470.