

Datasheet for ABIN7431485

**anti-Phospholipase C gamma 1 antibody (AA 1091-1290)**[Go to Product page](#)

## 7 Images

## Overview

Quantity:	100 µL
Target:	Phospholipase C gamma 1 (PLCG1)
Binding Specificity:	AA 1091-1290
Reactivity:	Human
Host:	Rabbit
Clonality:	Polyclonal
Conjugate:	This Phospholipase C gamma 1 antibody is un-conjugated
Application:	Western Blotting (WB), Immunohistochemistry (IHC), Immunoprecipitation (IP), Immunocytochemistry (ICC)

## Product Details

Purpose:	Polyclonal Antibody to Phospholipase C Gamma 1 (PLCg1)
Immunogen:	Recombinant Phospholipase C Gamma 1 (PLCg1) corresponding to Ser1091~Leu1290 with N-terminal His Tag
Isotype:	IgG
Specificity:	The antibody is a rabbit polyclonal antibody raised against PLCg1. It has been selected for its ability to recognize PLCg1 in immunohistochemical staining and western blotting.
Cross-Reactivity:	Mouse, Rat
Purification:	Antigen-specific affinity chromatography followed by Protein A affinity chromatography

## Target Details

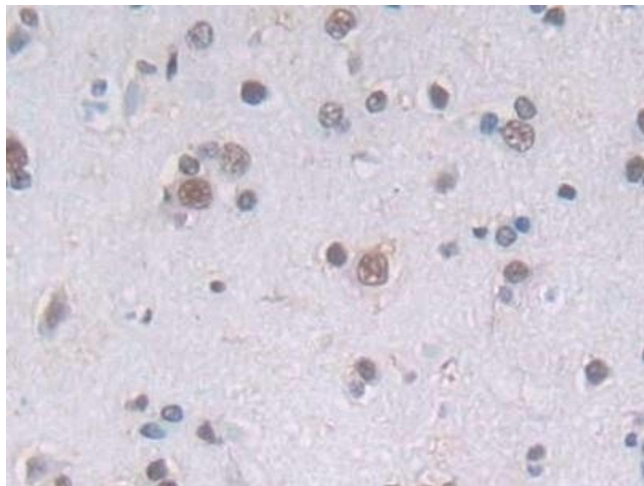
Target:	Phospholipase C gamma 1 (PLCG1)
Alternative Name:	Phospholipase C Gamma 1 ( <a href="#">PLCG1 Products</a> )
Background:	NCKAP3, PLC-G1, PLC-II, PLC1, PLC148, PLCgamma1, 1-phosphatidylinositol 4,5-bisphosphate phosphodiesterase gamma-1, Phosphoinositide phospholipase C-gamma-1
Pathways:	<a href="#">RTK Signaling</a> , <a href="#">WNT Signaling</a> , <a href="#">TCR Signaling</a> , <a href="#">Fc-epsilon Receptor Signaling Pathway</a> , <a href="#">EGFR Signaling Pathway</a> , <a href="#">Neurotrophin Signaling Pathway</a> , <a href="#">Thyroid Hormone Synthesis</a> , <a href="#">Inositol Metabolic Process</a> , <a href="#">Myometrial Relaxation and Contraction</a> , <a href="#">Regulation of Muscle Cell Differentiation</a> , <a href="#">Regulation of G-Protein Coupled Receptor Protein Signaling</a> , <a href="#">Skeletal Muscle Fiber Development</a> , <a href="#">G-protein mediated Events</a> , <a href="#">Signaling Events mediated by VEGFR1 and VEGFR2</a> , <a href="#">Interaction of EGFR with phospholipase C-gamma</a> , <a href="#">VEGFR1 Specific Signals</a> , <a href="#">VEGF Signaling</a>

## Application Details

Application Notes:	Western blotting: 0.5-5 µg/mL Immunohistochemistry: 5-20 µg/mL Immunocytochemistry: 5-20 µg/mL Optimal working dilutions must be determined by end user.
Comment:	The thermal stability is described by the loss rate. The loss rate was determined by accelerated thermal degradation test, that is, incubate the protein at 37°C for 48h, and no obvious degradation and precipitation were observed. The loss rate is less than 5% within the expiration date under appropriate storage condition.
Restrictions:	For Research Use only

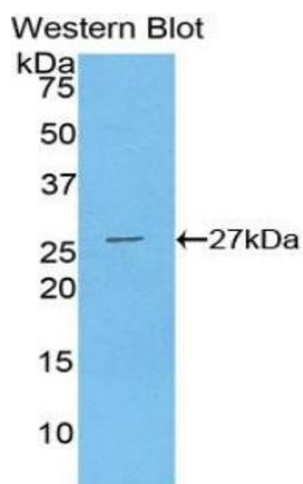
## Handling

Format:	Liquid
Buffer:	0.01M PBS, pH 7.4, containing 0.05 % Proclin-300, 50 % glycerol.
Preservative:	ProClin
Precaution of Use:	This product contains ProClin: a POISONOUS AND HAZARDOUS SUBSTANCE which should be handled by trained staff only.
Storage:	4 °C,-20 °C
Storage Comment:	Store at 4°C for frequent use. Stored at -20°C in a manual defrost freezer for two year without detectable loss of activity. Avoid repeated freeze-thaw cycles.
Expiry Date:	24 months



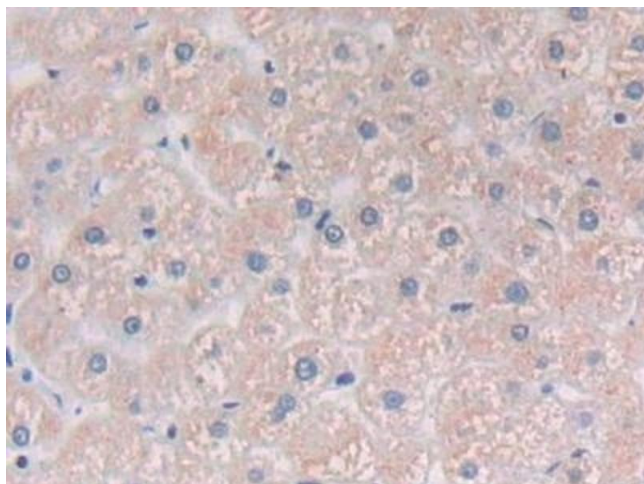
#### Immunohistochemistry

**Image 1.** Detection of PLCg1 in Human Cerebrum Tissue using Polyclonal Antibody to Phospholipase C Gamma 1 (PLCg1)



#### Western Blotting

**Image 2.** Detection of Recombinant PLCg1, Human using Polyclonal Antibody to Phospholipase C Gamma 1 (PLCg1)



#### Immunohistochemistry

**Image 3.** Detection of PLCg1 in Human Liver Tissue using Polyclonal Antibody to Phospholipase C Gamma 1 (PLCg1)

Please check the [product details page](#) for more images. Overall 7 images are available for ABIN7431485.