



[Go to Product page](#)

Datasheet for ABIN7431560  
**anti-Galectin 3 antibody (AA 1-250)**

8 Images

### Overview

|                      |  |
|----------------------|--|
| Quantity:            | 100 µL   |
| Target:              | Galectin 3 (LGALS3)  |
| Binding Specificity: | AA 1-250   |
| Reactivity:          | Human  |
| Host:                | Rabbit   |
| Clonality:           | Polyclonal   |
| Conjugate:           | This Galectin 3 antibody is un-conjugated  |
| Application:         | Western Blotting (WB), Immunohistochemistry (IHC), Immunoprecipitation (IP), Immunocytochemistry (ICC) |

### Product Details

|                   |  |
|-------------------|--|
| Purpose:          | Polyclonal Antibody to Galectin 3 (GAL3)   |
| Immunogen:        | Recombinant Galectin 3 (GAL3) corresponding to Met1~Ile250 with N-terminal His Tag   |
| Isotype:          | IgG  |
| Specificity:      | The antibody is a rabbit polyclonal antibody raised against GAL3. It has been selected for its ability to recognize GAL3 in immunohistochemical staining and western blotting. |
| Cross-Reactivity: | Rat  |
| Purification:     | Antigen-specific affinity chromatography followed by Protein A affinity chromatography   |

## Target Details

---

|                   |   |
|-------------------|---|
| Target:           | Galectin 3 (LGALS3)   |
| Alternative Name: | Galectin 3 ( <a href="#">LGALS3 Products</a> )  |
| Target Type:      | Chemical  |
| Background:       | LGALS3, CBP35, GALBP, GALIG, MAC2, 35 kDa lectin, Carbohydrate-binding protein 35, Galactose-specific lectin 3, Galactoside-binding protein, Laminin-binding protein, Lectin L-29 |
| Pathways:         | <a href="#">RTK Signaling</a>   |

## Application Details

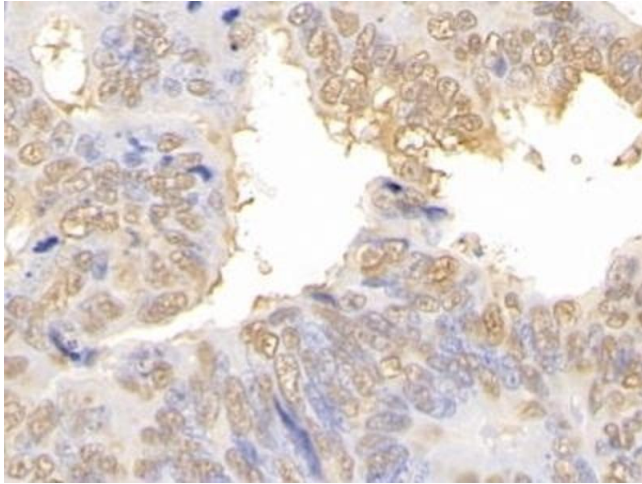
---

|                    |   |
|--------------------|---|
| Application Notes: | Western blotting: 0.5-2 µg/mL<br>Immunohistochemistry: 5-20 µg/mL<br>Immunocytochemistry: 5-20 µg/mL<br>Optimal working dilutions must be determined by end user.   |
| Comment:           | The thermal stability is described by the loss rate. The loss rate was determined by accelerated thermal degradation test, that is, incubate the protein at 37°C for 48h, and no obvious degradation and precipitation were observed. The loss rate is less than 5% within the expiration date under appropriate storage condition. |
| Restrictions:      | For Research Use only   |

## Handling

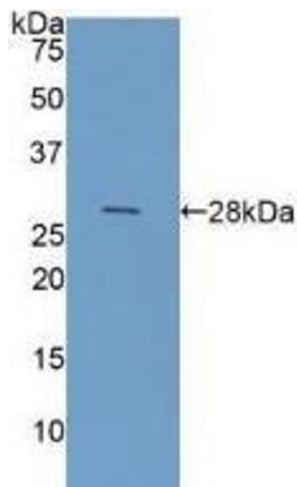
---

|                    |   |
|--------------------|---|
| Format:            | Liquid  |
| Buffer:            | 0.01M PBS, pH 7.4, containing 0.05 % Proclin-300, 50 % glycerol.  |
| Preservative:      | ProClin   |
| Precaution of Use: | This product contains ProClin: a POISONOUS AND HAZARDOUS SUBSTANCE which should be handled by trained staff only.   |
| Storage:           | 4 °C, -20 °C  |
| Storage Comment:   | Store at 4°C for frequent use. Stored at -20°C in a manual defrost freezer for two year without detectable loss of activity. Avoid repeated freeze-thaw cycles. |
| Expiry Date:       | 24 months   |



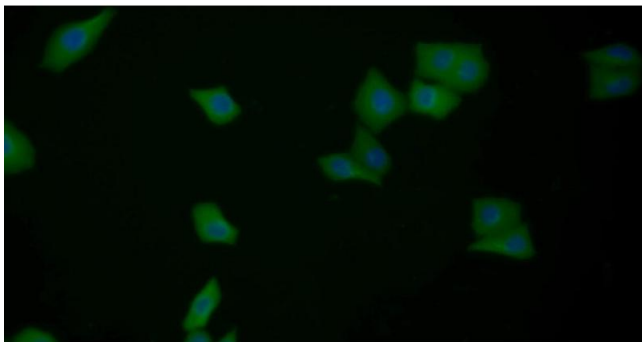
### Immunohistochemistry

**Image 1.** Detection of GAL3 in Human Colorectal cancer Tissue using Polyclonal Antibody to Galectin 3 (GAL3)



### Western Blotting

**Image 2.** Detection of Recombinant GAL3, Human using Polyclonal Antibody to Galectin 3 (GAL3)



### Immunofluorescence

**Image 3.** Detection of GAL3 in Human MCF7 cell using Polyclonal Antibody to Galectin 3 (GAL3)

Please check the [product details page](#) for more images. Overall 8 images are available for ABIN7431560.