



[Go to Product page](#)

Datasheet for ABIN7431584

anti-Cathepsin L antibody (AA 115-288)

1 Image

Overview

Quantity:	100 µL
Target:	Cathepsin L (CTSL1)
Binding Specificity:	AA 115-288
Reactivity:	Pig
Host:	Rabbit
Clonality:	Polyclonal
Conjugate:	This Cathepsin L antibody is un-conjugated
Application:	Western Blotting (WB), Immunohistochemistry (IHC), Immunoprecipitation (IP), Immunocytochemistry (ICC)

Product Details

Purpose:	Polyclonal Antibody to Cathepsin L (CTSL)
Immunogen:	Recombinant Cathepsin L (CTSL) corresponding to Pro115~Gly288 (Accession # Q28944) with N-terminal His and GST Tag
Isotype:	IgG
Specificity:	The antibody is a rabbit polyclonal antibody raised against CTSL. It has been selected for its ability to recognize CTSL in immunohistochemical staining and western blotting.
Purification:	Antigen-specific affinity chromatography followed by Protein A affinity chromatography

Target Details

Target:	Cathepsin L (CTSL1)
---------	---------------------

Target Details

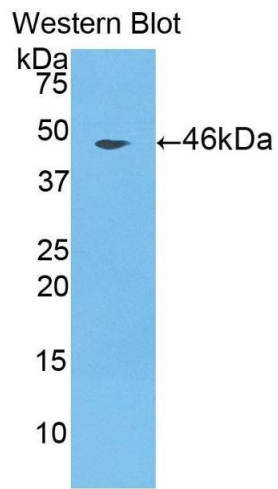
Alternative Name:	Cathepsin L (CTSL1 Products)
Background:	CTSL1, CATL, CTS-L, MEP, Cathepsin L1, Major excreted protein
Pathways:	Activation of Innate immune Response , Toll-Like Receptors Cascades

Application Details

Application Notes:	Western blotting: 0.5-2 µg/mL Immunohistochemistry: 5-20 µg/mL Immunocytochemistry: 5-20 µg/mL Optimal working dilutions must be determined by end user.
Comment:	The thermal stability is described by the loss rate. The loss rate was determined by accelerated thermal degradation test, that is, incubate the protein at 37°C for 48h, and no obvious degradation and precipitation were observed. The loss rate is less than 5% within the expiration date under appropriate storage condition.
Restrictions:	For Research Use only

Handling

Format:	Liquid
Buffer:	PBS, pH 7.4, containing 0.02 % Sodium azide, 50 % glycerol.
Preservative:	Sodium azide
Precaution of Use:	This product contains Sodium azide: a POISONOUS AND HAZARDOUS SUBSTANCE which should be handled by trained staff only.
Storage:	4 °C,-20 °C
Storage Comment:	Store at 4°C for frequent use. Stored at -20°C in a manual defrost freezer for two year without detectable loss of activity. Avoid repeated freeze-thaw cycles.
Expiry Date:	24 months



Western Blotting

Image 1. Detection of Recombinant CTSL, Porcine using Polyclonal Antibody to Cathepsin L (CTSL)