

Datasheet for ABIN7431623  
**anti-XRCC6 antibody (AA 319-538)**[Go to Product page](#)

## 7 Images

## Overview

|                      |  |
|----------------------|--|
| Quantity:            | 100 µL   |
| Target:              | XRCC6  |
| Binding Specificity: | AA 319-538   |
| Reactivity:          | Mouse  |
| Host:                | Rabbit   |
| Clonality:           | Polyclonal   |
| Conjugate:           | This XRCC6 antibody is un-conjugated   |
| Application:         | Western Blotting (WB), Immunohistochemistry (IHC), Immunoprecipitation (IP), Immunocytochemistry (ICC) |

## Product Details

|                   |  |
|-------------------|--|
| Purpose:          | Polyclonal Antibody to X-Ray Repair Cross Complementing 6 (XRCC6)  |
| Immunogen:        | Recombinant X-Ray Repair Cross Complementing 6 (XRCC6) corresponding to Thr319~Val538 (Accession # P23475)   |
| Isotype:          | IgG  |
| Specificity:      | The antibody is a rabbit polyclonal antibody raised against XRCC6. It has been selected for its ability to recognize XRCC6 in immunohistochemical staining and western blotting. |
| Cross-Reactivity: | Human, Rat   |
| Purification:     | Antigen-specific affinity chromatography followed by Protein A affinity chromatography   |

## Target Details

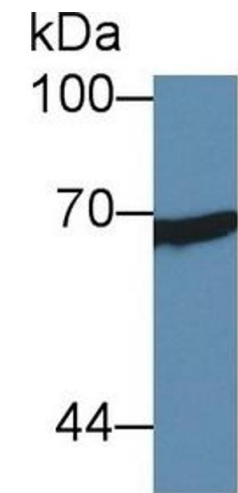
|                   |  |
|-------------------|--|
| Target:           | XRCC6  |
| Alternative Name: | X-Ray Repair Cross Complementing 6 ( <a href="#">XRCC6 Products</a> )  |
| Background:       | Ku70, CTC75, CTCBF, G22P1, ML8, TLAA, Lupus Ku Autoantigen Protein P70, ATP-Dependent DNA Helicase 2 Subunit 1, CTC box-binding factor 75 kDa, Thyroid-lupus autoantigen |
| Pathways:         | <a href="#">DNA Damage Repair</a>  |

## Application Details

|                    |   |
|--------------------|---|
| Application Notes: | Western blotting: 0.5-3 µg/mL<br>Immunohistochemistry: 5-30 µg/mL<br>Immunocytochemistry: 5-30 µg/mL<br>Optimal working dilutions must be determined by end user.   |
| Comment:           | The thermal stability is described by the loss rate. The loss rate was determined by accelerated thermal degradation test, that is, incubate the protein at 37°C for 48h, and no obvious degradation and precipitation were observed. The loss rate is less than 5% within the expiration date under appropriate storage condition. |
| Restrictions:      | For Research Use only   |

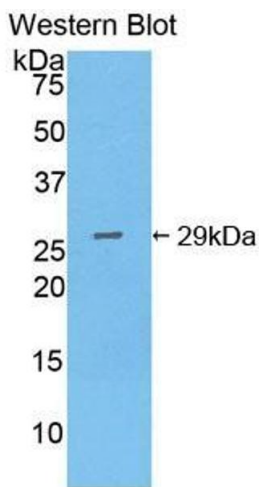
## Handling

|                    |   |
|--------------------|---|
| Format:            | Liquid  |
| Buffer:            | PBS, pH 7.4, containing 0.02 % Sodium azide, 50 % glycerol.   |
| Preservative:      | Sodium azide  |
| Precaution of Use: | This product contains Sodium azide: a POISONOUS AND HAZARDOUS SUBSTANCE which should be handled by trained staff only.  |
| Storage:           | 4 °C,-20 °C   |
| Storage Comment:   | Store at 4°C for frequent use. Stored at -20°C in a manual defrost freezer for two year without detectable loss of activity. Avoid repeated freeze-thaw cycles. |
| Expiry Date:       | 24 months   |



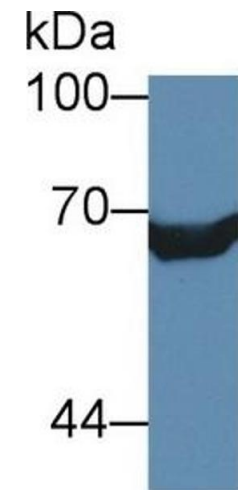
**Western Blotting**

**Image 1.** Detection of XRCC6 in Human MCF7 cell lysate using Polyclonal Antibody to X-Ray Repair Cross Complementing 6 (XRCC6)



**Western Blotting**

**Image 2.** Detection of Recombinant XRCC6, Mouse using Polyclonal Antibody to X-Ray Repair Cross Complementing 6 (XRCC6)



**Western Blotting**

**Image 3.** Detection of recombinant XRCC6 using Polyclonal Antibody to X-Ray Repair Cross Complementing 6 (XRCC6)

Please check the [product details page](#) for more images. Overall 7 images are available for ABIN7431623.