

Datasheet for ABIN7431635  
**anti-MAP1A antibody (AA 2552-2759)**[Go to Product page](#)

## 7 Images

## Overview

Quantity:	100 µL
Target:	MAP1A
Binding Specificity:	AA 2552-2759
Reactivity:	Mouse
Host:	Rabbit
Clonality:	Polyclonal
Conjugate:	This MAP1A antibody is un-conjugated
Application:	Immunohistochemistry (IHC), Western Blotting (WB), Immunoprecipitation (IP), Immunocytochemistry (ICC)

## Product Details

Purpose:	Polyclonal Antibody to Microtubule Associated Protein 1A (MAP1A)
Immunogen:	Recombinant Microtubule Associated Protein 1A (MAP1A) corresponding to Asp2552~Ser2759 (Accession # Q9QYR6)
Isotype:	IgG
Specificity:	The antibody is a rabbit polyclonal antibody raised against MAP1A. It has been selected for its ability to recognize MAP1A in immunohistochemical staining and western blotting.
Cross-Reactivity:	Human
Purification:	Antigen-specific affinity chromatography followed by Protein A affinity chromatography

## Target Details

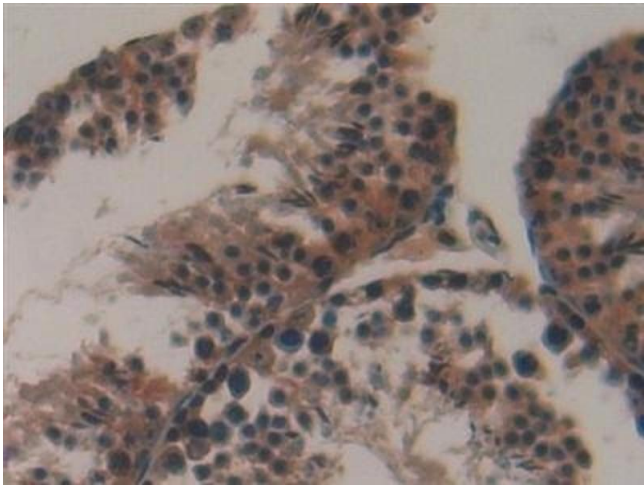
Target:	MAP1A
Alternative Name:	Microtubule Associated Protein 1A ( <a href="#">MAP1A Products</a> )
Background:	MAP-1A, MAP1-A, MAP1L, MTAP1A, Proliferation-related protein p80
Pathways:	<a href="#">Microtubule Dynamics</a> , <a href="#">Sensory Perception of Sound</a>

## Application Details

Application Notes:	Western blotting: 0.5-2 µg/mL 1:100-400 Immunohistochemistry: 5-20 µg/mL 1:10-40 Immunocytochemistry: 5-20 µg/mL 1:10-40 Optimal working dilutions must be determined by end user.
Comment:	The thermal stability is described by the loss rate. The loss rate was determined by accelerated thermal degradation test, that is, incubate the protein at 37°C for 48h, and no obvious degradation and precipitation were observed. The loss rate is less than 5% within the expiration date under appropriate storage condition.
Restrictions:	For Research Use only

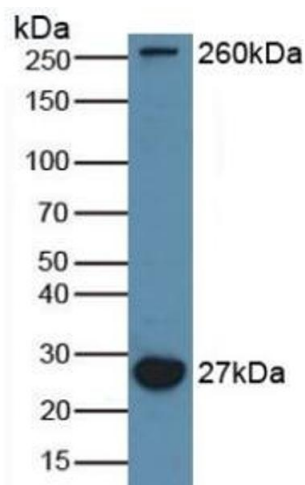
## Handling

Format:	Liquid
Buffer:	0.01M PBS, pH 7.4, containing 0.05 % Proclin-300, 50 % glycerol.
Preservative:	ProClin
Precaution of Use:	This product contains ProClin: a POISONOUS AND HAZARDOUS SUBSTANCE which should be handled by trained staff only.
Storage:	4 °C, -20 °C
Storage Comment:	Store at 4°C for frequent use. Stored at -20°C in a manual defrost freezer for two year without detectable loss of activity. Avoid repeated freeze-thaw cycles.
Expiry Date:	24 months



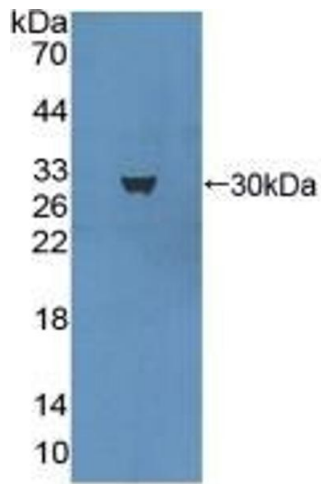
#### Immunohistochemistry

**Image 1.** Detection of MAP1A in Mouse Testis Tissue using Polyclonal Antibody to Microtubule Associated Protein 1A (MAP1A)



#### Western Blotting

**Image 2.** Detection of MAP1A in Mouse Brain Tissue using Polyclonal Antibody to Microtubule Associated Protein 1A (MAP1A)



#### Western Blotting

**Image 3.** Detection of Recombinant MAP1A, Mouse using Polyclonal Antibody to Microtubule Associated Protein 1A (MAP1A)

Please check the [product details page](#) for more images. Overall 7 images are available for ABIN7431635.