

Datasheet for ABIN7431716

**anti-C4A antibody**

## 2 Images

[Go to Product page](#)

## Overview

Quantity:	100 µL
Target:	C4A (C4a)
Reactivity:	Mouse
Host:	Rabbit
Clonality:	Polyclonal
Conjugate:	This C4A antibody is un-conjugated
Application:	Western Blotting (WB), Immunohistochemistry (IHC), Immunoprecipitation (IP), Immunocytochemistry (ICC)

## Product Details

Purpose:	Polyclonal Antibody to Complement Component 4a (C4a)
Immunogen:	Recombinant Complement Component 4a (C4a)
Isotype:	IgG
Specificity:	The antibody is a rabbit polyclonal antibody raised against C4a. It has been selected for its ability to recognize C4a in immunohistochemical staining and western blotting.
Cross-Reactivity:	Rat
Purification:	Antigen-specific affinity chromatography followed by Protein A affinity chromatography

## Target Details

Target:	C4A (C4a)
---------	-----------

## Target Details

Alternative Name: Complement Component 4a ([C4a Products](#))

Background: C4a anaphylatoxin

Pathways: [Complement System](#)

## Application Details

Application Notes: Western blotting: 0.5-3 µg/mL  
Immunohistochemistry: 5-30 µg/mL  
Immunocytochemistry: 5-30 µg/mL  
Optimal working dilutions must be determined by end user.

Comment: The thermal stability is described by the loss rate. The loss rate was determined by accelerated thermal degradation test, that is, incubate the protein at 37°C for 48h, and no obvious degradation and precipitation were observed. The loss rate is less than 5% within the expiration date under appropriate storage condition.

Restrictions: For Research Use only

## Handling

Format: Liquid

Buffer: PBS, pH 7.4, containing 0.02 % Sodium azide, 50 % glycerol.

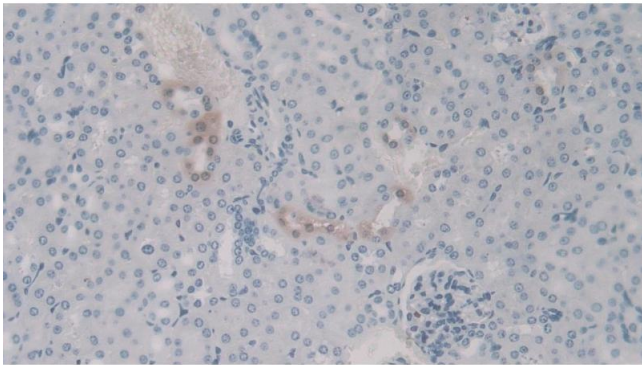
Preservative: Sodium azide

Precaution of Use: This product contains Sodium azide: a POISONOUS AND HAZARDOUS SUBSTANCE which should be handled by trained staff only.

Storage: 4 °C,-20 °C

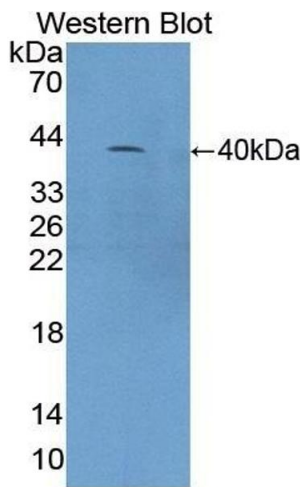
Storage Comment: Store at 4°C for frequent use. Stored at -20°C in a manual defrost freezer for two year without detectable loss of activity. Avoid repeated freeze-thaw cycles.

Expiry Date: 24 months



Immunohistochemistry

**Image 1.** Detection of C4a in Mouse Kidney Tissue using Polyclonal Antibody to Complement Component 4a (C4a)



Western Blotting

**Image 2.** Detection of Recombinant C4a, Mouse using Polyclonal Antibody to Complement Component 4a (C4a)