

Datasheet for ABIN7431728
anti-TFPI antibody (AA 29-210)[Go to Product page](#)

3 Images

Overview

Quantity:	100 µL
Target:	TFPI
Binding Specificity:	AA 29-210
Reactivity:	Human
Host:	Rabbit
Clonality:	Polyclonal
Conjugate:	This TFPI antibody is un-conjugated
Application:	Western Blotting (WB), Immunohistochemistry (IHC), Immunoprecipitation (IP), Immunocytochemistry (ICC)

Product Details

Purpose:	Polyclonal Antibody to Tissue Factor Pathway Inhibitor (TFPI)
Immunogen:	Recombinant Tissue Factor Pathway Inhibitor (TFPI) corresponding to Asp29~Glu210 (Accession # P10646)
Isotype:	IgG
Specificity:	The antibody is a rabbit polyclonal antibody raised against TFPI. It has been selected for its ability to recognize TFPI in immunohistochemical staining and western blotting.
Cross-Reactivity:	Pig
Purification:	Antigen-specific affinity chromatography followed by Protein A affinity chromatography

Target Details

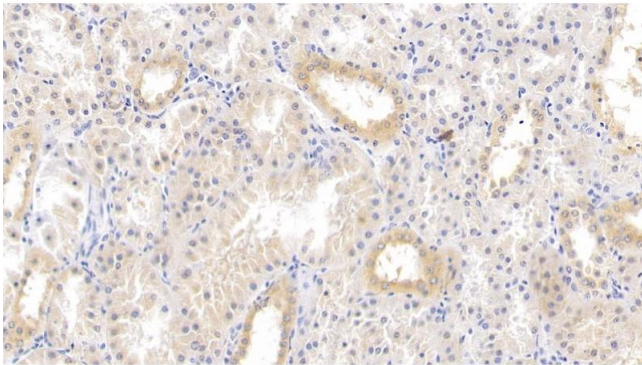
Target:	TFPI
Alternative Name:	Tissue Factor Pathway Inhibitor (TFPI Products)
Background:	TFI, EPI, LACI, TFPI1, Lipoprotein-Associated Coagulation Inhibitor, Extrinsic pathway inhibitor

Application Details

Application Notes:	Western blotting: 0.5-2 µg/mL Immunohistochemistry: 5-20 µg/mL Immunocytochemistry: 5-20 µg/mL Optimal working dilutions must be determined by end user.
Comment:	The thermal stability is described by the loss rate. The loss rate was determined by accelerated thermal degradation test, that is, incubate the protein at 37°C for 48h, and no obvious degradation and precipitation were observed. The loss rate is less than 5% within the expiration date under appropriate storage condition.
Restrictions:	For Research Use only

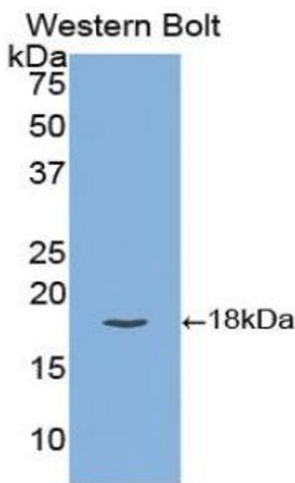
Handling

Format:	Liquid
Buffer:	PBS, pH 7.4, containing 0.02 % Sodium azide, 50 % glycerol.
Preservative:	Sodium azide
Precaution of Use:	This product contains Sodium azide: a POISONOUS AND HAZARDOUS SUBSTANCE which should be handled by trained staff only.
Storage:	4 °C, -20 °C
Storage Comment:	Store at 4°C for frequent use. Stored at -20°C in a manual defrost freezer for two year without detectable loss of activity. Avoid repeated freeze-thaw cycles.
Expiry Date:	24 months



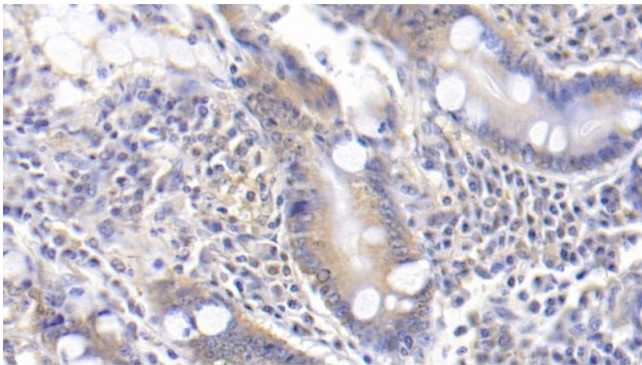
Immunohistochemistry

Image 1. Detection of TFPI in Human Kidney Tissue using Polyclonal Antibody to Tissue Factor Pathway Inhibitor (TFPI)



Western Blotting

Image 2. Detection of Recombinant TFPI, Human using Polyclonal Antibody to Tissue Factor Pathway Inhibitor (TFPI)



Immunohistochemistry

Image 3. Detection of TFPI in Human Small intestine Tissue using Polyclonal Antibody to Tissue Factor Pathway Inhibitor (TFPI)