



[Go to Product page](#)

Datasheet for ABIN7431758
anti-PNPLA2 antibody (AA 484-701)

3 Images

Overview

Quantity:	100 µL
Target:	PNPLA2
Binding Specificity:	AA 484-701
Reactivity:	Human
Host:	Rabbit
Clonality:	Polyclonal
Conjugate:	This PNPLA2 antibody is un-conjugated
Application:	Western Blotting (WB), Immunocytochemistry (ICC), ELISA, Immunohistochemistry (Frozen Sections) (IHC (fro)), Immunohistochemistry (Paraffin-embedded Sections) (IHC (p))

Product Details

Purpose:	Polyclonal Antibody to Phospholipase A2, Calcium Independent (iPLA2)
Immunogen:	Recombinant Phospholipase A2, Calcium Independent (iPLA2) corresponding to Arg484~Ile701 with N-terminal His Tag
Isotype:	IgG
Specificity:	The antibody is a rabbit polyclonal antibody raised against iPLA2. It has been selected for its ability to recognize iPLA2 in immunohistochemical staining and western blotting.
Cross-Reactivity:	Mouse, Rat
Purification:	Antigen-specific affinity chromatography followed by Protein A affinity chromatography

Target Details

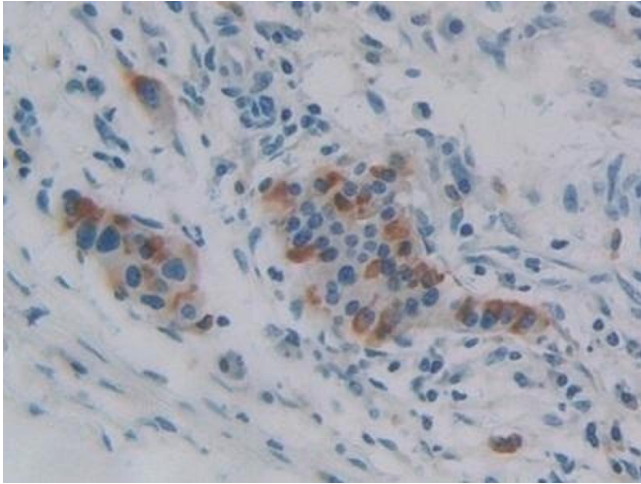
Target:	PNPLA2
Alternative Name:	Phospholipase A2, Calcium Independent (PNPLA2 Products)
Background:	PLA2G6, CaI-PLA2, GVI, INAD1, PNPLA9, Ca ²⁺ Independent PLA2, 85 kDa Calcium-Independent Phospholipase A2, Phospholipase A2,group VI(Cytosolic,Calcium-Independent)

Application Details

Application Notes:	Western blotting: 1-5 µg/mL Immunocytochemistry in formalin fixed cells: 5-20 µg/mL Immunohistochemistry in formalin fixed frozen section: 5-20 µg/mL Immunohistochemistry in paraffin section: 5-20 µg/mL Enzyme-linked Immunosorbent Assay: 0.05-2 µg/mL Optimal working dilutions must be determined by end user.
Comment:	The thermal stability is described by the loss rate. The loss rate was determined by accelerated thermal degradation test, that is, incubate the protein at 37°C for 48h, and no obvious degradation and precipitation were observed. The loss rate is less than 5% within the expiration date under appropriate storage condition.
Restrictions:	For Research Use only

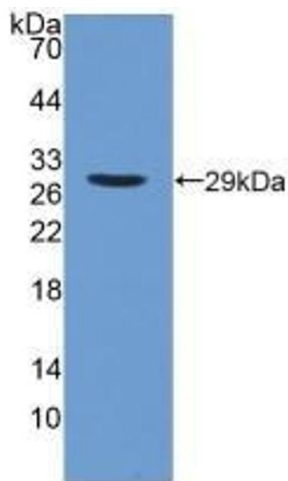
Handling

Format:	Liquid
Buffer:	0.01M PBS, pH 7.4, containing 0.05 % Proclin-300, 50 % glycerol.
Preservative:	ProClin
Precaution of Use:	This product contains ProClin: a POISONOUS AND HAZARDOUS SUBSTANCE which should be handled by trained staff only.
Storage:	4 °C,-20 °C
Storage Comment:	Store at 4°C for frequent use. Stored at -20°C in a manual defrost freezer for two year without detectable loss of activity. Avoid repeated freeze-thaw cycles.
Expiry Date:	24 months



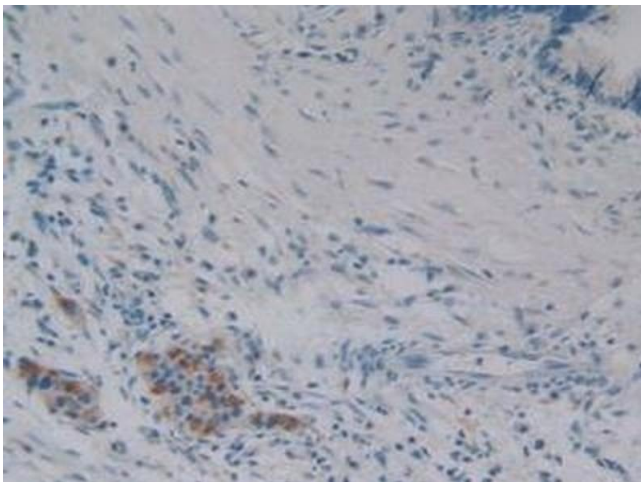
Immunohistochemistry

Image 1. Detection of iPLA2 in Human Pancreatic cancer Tissue using Polyclonal Antibody to Phospholipase A2, Calcium Independent (iPLA2)



Western Blotting

Image 2. Detection of Recombinant iPLA2, Human using Polyclonal Antibody to Phospholipase A2, Calcium Independent (iPLA2)



Immunohistochemistry

Image 3. Detection of iPLA2 in Human Pancreas Tissue using Polyclonal Antibody to Phospholipase A2, Calcium Independent (iPLA2)