



[Go to Product page](#)

Datasheet for ABIN7431761
anti-PNPLA2 antibody (AA 481-702)

5 Images

Overview

Quantity:	100 µL
Target:	PNPLA2
Binding Specificity:	AA 481-702
Reactivity:	Mouse
Host:	Rabbit
Clonality:	Polyclonal
Conjugate:	This PNPLA2 antibody is un-conjugated
Application:	Western Blotting (WB), Immunohistochemistry (IHC), Immunoprecipitation (IP), Immunocytochemistry (ICC)

Product Details

Purpose:	Polyclonal Antibody to Phospholipase A2, Calcium Independent (iPLA2)
Immunogen:	Recombinant Phospholipase A2, Calcium Independent (iPLA2) corresponding to Leu481~Val702 (Accession # P97819)
Isotype:	IgG
Specificity:	The antibody is a rabbit polyclonal antibody raised against iPLA2. It has been selected for its ability to recognize iPLA2 in immunohistochemical staining and western blotting.
Cross-Reactivity:	Human, Rat
Purification:	Antigen-specific affinity chromatography followed by Protein A affinity chromatography

Target Details

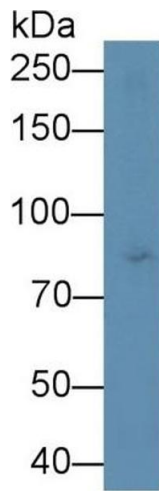
Target:	PNPLA2
Alternative Name:	Phospholipase A2, Calcium Independent (PNPLA2 Products)
Background:	PLA2G6, CaI-PLA2, GVI, INAD1, PNPLA9, Ca ²⁺ Independent PLA2, 85 kDa Calcium-Independent Phospholipase A2, Phospholipase A2,group VI(Cytosolic,Calcium-Independent)

Application Details

Application Notes:	Western blotting: 0.5-2 µg/mL Immunohistochemistry: 5-20 µg/mL Immunocytochemistry: 5-20 µg/mL Optimal working dilutions must be determined by end user.
Comment:	The thermal stability is described by the loss rate. The loss rate was determined by accelerated thermal degradation test, that is, incubate the protein at 37°C for 48h, and no obvious degradation and precipitation were observed. The loss rate is less than 5% within the expiration date under appropriate storage condition.
Restrictions:	For Research Use only

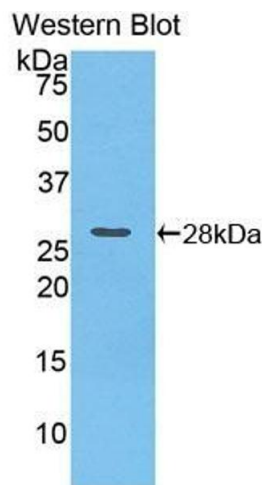
Handling

Format:	Liquid
Buffer:	PBS, pH 7.4, containing 0.02 % Sodium azide, 50 % glycerol.
Preservative:	Sodium azide
Precaution of Use:	This product contains Sodium azide: a POISONOUS AND HAZARDOUS SUBSTANCE which should be handled by trained staff only.
Storage:	4 °C,-20 °C
Storage Comment:	Store at 4°C for frequent use. Stored at -20°C in a manual defrost freezer for two year without detectable loss of activity. Avoid repeated freeze-thaw cycles.
Expiry Date:	24 months



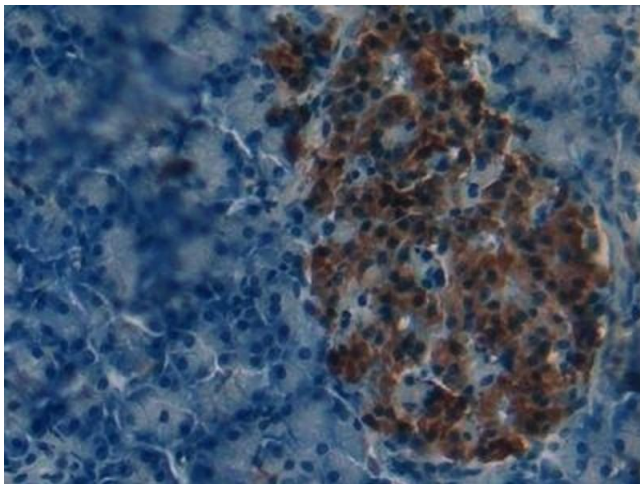
Western Blotting

Image 1. Detection of iPLA2 in Mouse Testis lysate using Polyclonal Antibody to Phospholipase A2, Calcium Independent (iPLA2)



Western Blotting

Image 2. Detection of Recombinant iPLA2, Mouse using Polyclonal Antibody to Phospholipase A2, Calcium Independent (iPLA2)



Immunohistochemistry

Image 3. Detection of iPLA2 in Mouse Pancreas Tissue using Polyclonal Antibody to Phospholipase A2, Calcium Independent (iPLA2)

Please check the [product details page](#) for more images. Overall 5 images are available for ABIN7431761.