

Datasheet for ABIN7432037
anti-LIFR antibody (AA 151-290)[Go to Product page](#)

2 Images

Overview

Quantity:	100 µL
Target:	LIFR
Binding Specificity:	AA 151-290
Reactivity:	Mouse
Host:	Rabbit
Clonality:	Polyclonal
Conjugate:	This LIFR antibody is un-conjugated
Application:	Western Blotting (WB), Immunohistochemistry (IHC), Immunoprecipitation (IP), Immunocytochemistry (ICC)

Product Details

Purpose:	Polyclonal Antibody to Leukemia Inhibitory Factor Receptor (LIFR)
Immunogen:	Recombinant Leukemia Inhibitory Factor Receptor (LIFR) corresponding to Lys151~Gln290 (Accession # P42703)
Isotype:	IgG
Specificity:	The antibody is a rabbit polyclonal antibody raised against LIFR. It has been selected for its ability to recognize LIFR in immunohistochemical staining and western blotting.
Cross-Reactivity:	Rat
Purification:	Antigen-specific affinity chromatography followed by Protein A affinity chromatography

Target Details

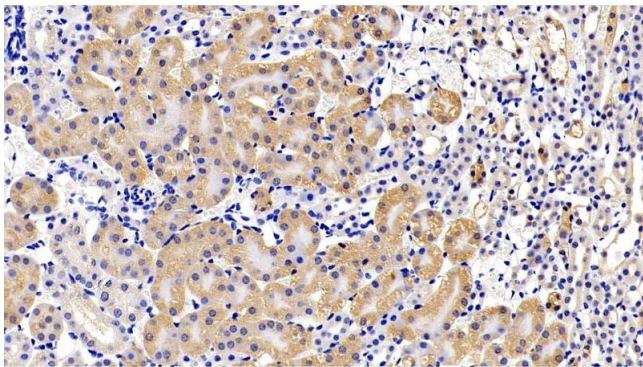
Target:	LIFR
Alternative Name:	Leukemia Inhibitory Factor Receptor (LIFR Products)
Background:	CD118, SJS2, STWS, SWS
Pathways:	JAK-STAT Signaling , Growth Factor Binding

Application Details

Application Notes:	Western blotting: 0.5-2 µg/mL Immunohistochemistry: 5-20 µg/mL Immunocytochemistry: 5-20 µg/mL Optimal working dilutions must be determined by end user.
Comment:	The thermal stability is described by the loss rate. The loss rate was determined by accelerated thermal degradation test, that is, incubate the protein at 37°C for 48h, and no obvious degradation and precipitation were observed. The loss rate is less than 5% within the expiration date under appropriate storage condition.
Restrictions:	For Research Use only

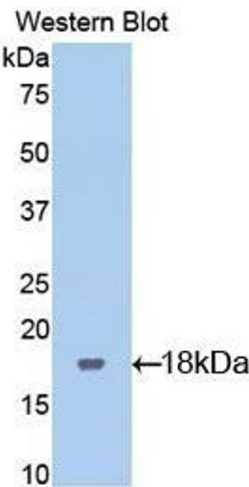
Handling

Format:	Liquid
Buffer:	PBS, pH 7.4, containing 0.02 % Sodium azide, 50 % glycerol.
Preservative:	Sodium azide
Precaution of Use:	This product contains Sodium azide: a POISONOUS AND HAZARDOUS SUBSTANCE which should be handled by trained staff only.
Storage:	4 °C, -20 °C
Storage Comment:	Store at 4°C for frequent use. Stored at -20°C in a manual defrost freezer for two year without detectable loss of activity. Avoid repeated freeze-thaw cycles.
Expiry Date:	24 months



Immunohistochemistry

Image 1. Detection of LIFR in Mouse Kidney Tissue using Polyclonal Antibody to Leukemia Inhibitory Factor Receptor (LIFR)



Western Blotting

Image 2. Detection of Recombinant LIFR, Rat using Polyclonal Antibody to Leukemia Inhibitory Factor Receptor (LIFR)