

Datasheet for ABIN7432046
anti-IL-1 beta antibody (AA 103-260)



[Go to Product page](#)

2 Images

Overview

Quantity:	100 µL
Target:	IL-1 beta (IL1B)
Binding Specificity:	AA 103-260
Reactivity:	Dog
Host:	Rabbit
Clonality:	Polyclonal
Conjugate:	This IL-1 beta antibody is un-conjugated
Application:	Western Blotting (WB), Immunohistochemistry (IHC), Immunoprecipitation (IP), Immunocytochemistry (ICC)

Product Details

Purpose:	Polyclonal Antibody to Interleukin 1 Beta (IL1b)
Immunogen:	Recombinant Interleukin 1 Beta (IL1b) corresponding to Cys103~Thr260 (Accession # Q2VCE2)
Isotype:	IgG
Specificity:	The antibody is a rabbit polyclonal antibody raised against IL1b. It has been selected for its ability to recognize IL1b in immunohistochemical staining and western blotting.
Purification:	Antigen-specific affinity chromatography followed by Protein A affinity chromatography

Target Details

Target:	IL-1 beta (IL1B)
---------	------------------

Target Details

Alternative Name:	Interleukin 1 Beta (IL1B Products)
Background:	IL1-B, IL1-Beta, IL1F2, IL-1 β , Interleukin-1 Family Member 2, Catabolin
Pathways:	NF-kappaB Signaling , Interferon-gamma Pathway , TLR Signaling , Negative Regulation of Hormone Secretion , Cellular Response to Molecule of Bacterial Origin , Carbohydrate Homeostasis , Glycosaminoglycan Metabolic Process , Myometrial Relaxation and Contraction , Regulation of Leukocyte Mediated Immunity , Positive Regulation of Immune Effector Process , Autophagy , Cancer Immune Checkpoints , Inflammasome

Application Details

Application Notes:	Western blotting: 0.5-2 μ g/mL Immunohistochemistry: 5-20 μ g/mL Immunocytochemistry: 5-20 μ g/mL Optimal working dilutions must be determined by end user.
Comment:	The thermal stability is described by the loss rate. The loss rate was determined by accelerated thermal degradation test, that is, incubate the protein at 37°C for 48h, and no obvious degradation and precipitation were observed. The loss rate is less than 5% within the expiration date under appropriate storage condition.
Restrictions:	For Research Use only

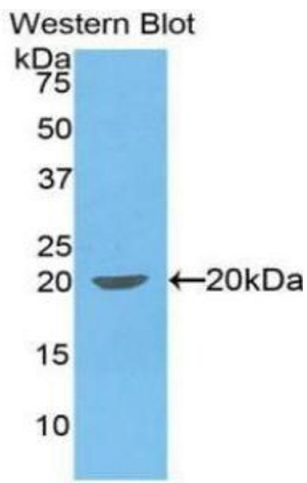
Handling

Format:	Liquid
Buffer:	PBS, pH 7.4, containing 0.02 % Sodium azide, 50 % glycerol.
Preservative:	Sodium azide
Precaution of Use:	This product contains Sodium azide: a POISONOUS AND HAZARDOUS SUBSTANCE which should be handled by trained staff only.
Storage:	4 °C, -20 °C
Storage Comment:	Store at 4°C for frequent use. Stored at -20°C in a manual defrost freezer for two year without detectable loss of activity. Avoid repeated freeze-thaw cycles.
Expiry Date:	24 months



Western Blotting

Image 1. Detection of IL1b in Canine Pancreas lysate using Polyclonal Antibody to Interleukin 1 Beta (IL1b)



Western Blotting

Image 2. Detection of Recombinant IL1b, Canine using Polyclonal Antibody to Interleukin 1 Beta (IL1b)