

Datasheet for ABIN7432130
anti-Cyclin D2 antibody (AA 68-278)

3 Images

[Go to Product page](#)

Overview

Quantity:	100 µL
Target:	Cyclin D2 (CCND2)
Binding Specificity:	AA 68-278
Reactivity:	Human
Host:	Rabbit
Clonality:	Polyclonal
Conjugate:	This Cyclin D2 antibody is un-conjugated
Application:	Western Blotting (WB), Immunohistochemistry (IHC), Immunoprecipitation (IP), Immunocytochemistry (ICC)

Product Details

Purpose:	Polyclonal Antibody to Cyclin D2 (CCND2)
Immunogen:	Recombinant Cyclin D2 (CCND2) corresponding to Glu68~Ala278
Isotype:	IgG
Specificity:	The antibody is a rabbit polyclonal antibody raised against CCND2. It has been selected for its ability to recognize CCND2 in immunohistochemical staining and western blotting.
Cross-Reactivity:	Mouse
Purification:	Antigen-specific affinity chromatography followed by Protein A affinity chromatography

Target Details

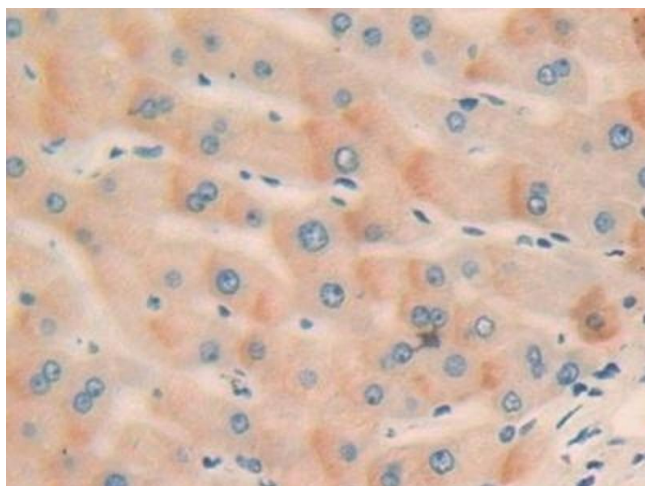
Target:	Cyclin D2 (CCND2)
Alternative Name:	Cyclin D2 (CCND2 Products)
Background:	CCN-D2, G1/S-Specific Cyclin-D2
Pathways:	Cell Division Cycle, Mitotic G1-G1/S Phases

Application Details

Application Notes:	Western blotting: 0.5-2 µg/mL Immunohistochemistry: 5-20 µg/mL Immunocytochemistry: 5-20 µg/mL Optimal working dilutions must be determined by end user.
Comment:	The thermal stability is described by the loss rate. The loss rate was determined by accelerated thermal degradation test, that is, incubate the protein at 37°C for 48h, and no obvious degradation and precipitation were observed. The loss rate is less than 5% within the expiration date under appropriate storage condition.
Restrictions:	For Research Use only

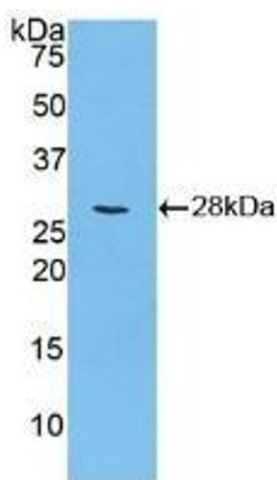
Handling

Format:	Liquid
Buffer:	0.01M PBS, pH 7.4, containing 0.05 % Proclin-300, 50 % glycerol.
Preservative:	ProClin
Precaution of Use:	This product contains ProClin: a POISONOUS AND HAZARDOUS SUBSTANCE which should be handled by trained staff only.
Storage:	4 °C,-20 °C
Storage Comment:	Store at 4°C for frequent use. Stored at -20°C in a manual defrost freezer for two year without detectable loss of activity. Avoid repeated freeze-thaw cycles.
Expiry Date:	24 months



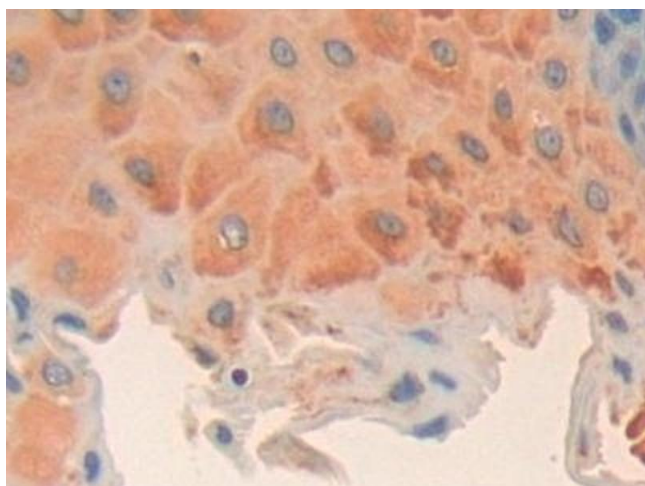
Immunohistochemistry

Image 1. Detection of CCND2 in Human Liver Tissue using Polyclonal Antibody to Cyclin D2 (CCND2)



Western Blotting

Image 2. Detection of Recombinant CCND2, Human using Polyclonal Antibody to Cyclin D2 (CCND2)



Immunohistochemistry

Image 3. Detection of CCND2 in Human Esophagus Tissue using Polyclonal Antibody to Cyclin D2 (CCND2)