

Datasheet for ABIN7432280

anti-Complement Factor H antibody (AA 975-1217)

5 Images

[Go to Product page](#)

Overview

Quantity:	100 µL
Target:	Complement Factor H (CFH)
Binding Specificity:	AA 975-1217
Reactivity:	Rat
Host:	Rabbit
Clonality:	Polyclonal
Conjugate:	This Complement Factor H antibody is un-conjugated
Application:	Western Blotting (WB), Immunohistochemistry (IHC), Immunoprecipitation (IP), Immunocytochemistry (ICC)

Product Details

Purpose:	Polyclonal Antibody to Complement Factor H (CFH)
Immunogen:	Recombinant Complement Factor H (CFH) corresponding to Ala975~Ser1217 with N-terminal His Tag
Isotype:	IgG
Specificity:	The antibody is a rabbit polyclonal antibody raised against CFH. It has been selected for its ability to recognize CFH in immunohistochemical staining and western blotting.
Purification:	Antigen-specific affinity chromatography followed by Protein A affinity chromatography

Target Details

Target:	Complement Factor H (CFH)
---------	---------------------------

Target Details

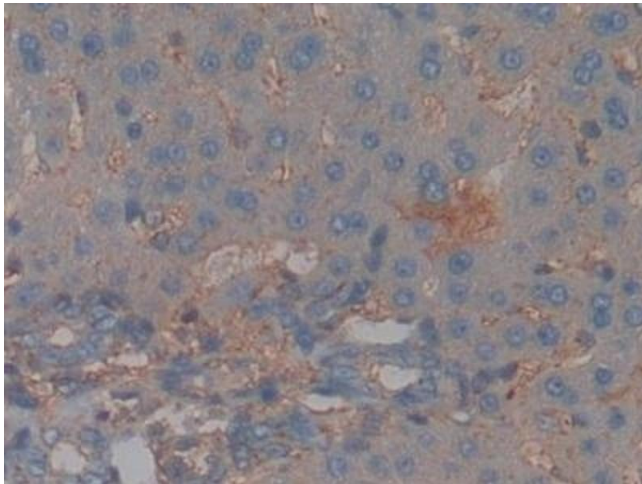
Alternative Name:	Complement Factor H (CFH Products)
Background:	CF-H, FH, FHL1, ARMD4, ARMS1, CFHL3, HF1, HF2, HUS, H Factor 2, Age-Related Maculopathy Susceptibility 1, Adrenomedullin binding protein
Pathways:	Complement System , Cellular Response to Molecule of Bacterial Origin

Application Details

Application Notes:	Western blotting: 0.5-2 µg/mL 1:200-800 Immunohistochemistry: 5-20 µg/mL 1:20-80 Immunocytochemistry: 5-20 µg/mL 1:20-80 Optimal working dilutions must be determined by end user.
Comment:	The thermal stability is described by the loss rate. The loss rate was determined by accelerated thermal degradation test, that is, incubate the protein at 37°C for 48h, and no obvious degradation and precipitation were observed. The loss rate is less than 5% within the expiration date under appropriate storage condition.
Restrictions:	For Research Use only

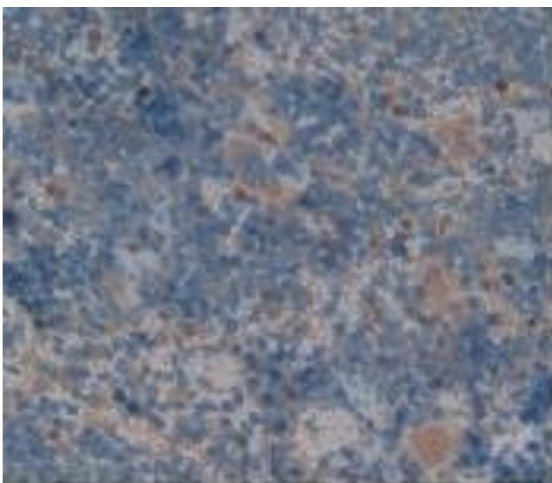
Handling

Format:	Liquid
Buffer:	PBS, pH 7.4, containing 0.02 % Sodium azide, 50 % glycerol.
Preservative:	Sodium azide
Precaution of Use:	This product contains Sodium azide: a POISONOUS AND HAZARDOUS SUBSTANCE which should be handled by trained staff only.
Storage:	4 °C, -20 °C
Storage Comment:	Store at 4°C for frequent use. Stored at -20°C in a manual defrost freezer for two year without detectable loss of activity. Avoid repeated freeze-thaw cycles.
Expiry Date:	24 months



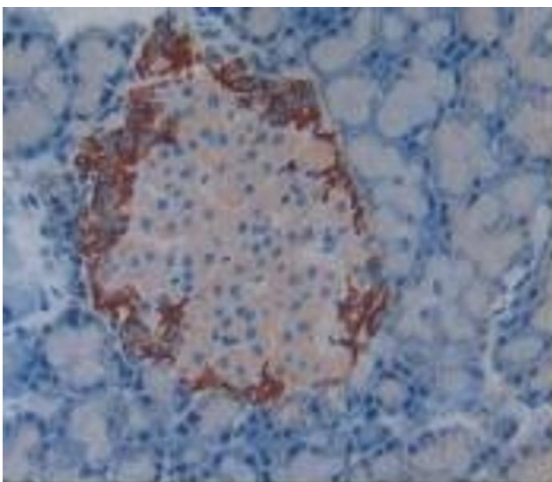
Immunohistochemistry

Image 1. Detection of CFH in Rat Liver Tissue using Polyclonal Antibody to Complement Factor H (CFH)



Immunohistochemistry

Image 2. Detection of CFH in Rat Spleen Tissue using Polyclonal Antibody to Complement Factor H (CFH)



Immunohistochemistry

Image 3. Detection of CFH in Rat Pancreas Tissue using Polyclonal Antibody to Complement Factor H (CFH)

Please check the [product details page](#) for more images. Overall 5 images are available for ABIN7432280.