

Datasheet for ABIN7432361

**anti-Dopamine d2 Receptor antibody**[Go to Product page](#)**1** Image

## Overview

Quantity:	100 µL
Target:	Dopamine d2 Receptor (DRD2)
Reactivity:	Dog
Host:	Rabbit
Clonality:	Polyclonal
Conjugate:	This Dopamine d2 Receptor antibody is un-conjugated
Application:	Western Blotting (WB), Immunohistochemistry (IHC), Immunoprecipitation (IP), Immunocytochemistry (ICC)

## Product Details

Purpose:	Polyclonal Antibody to Dopamine Receptor D2 (DRD2)
Immunogen:	Recombinant Dopamine Receptor D2 (DRD2) corresponding to N-terminal His Tag
Isotype:	IgG
Specificity:	The antibody is a rabbit polyclonal antibody raised against DRD2. It has been selected for its ability to recognize DRD2 in immunohistochemical staining and western blotting.
Purification:	Antigen-specific affinity chromatography followed by Protein A affinity chromatography

## Target Details

Target:	Dopamine d2 Receptor (DRD2)
Alternative Name:	Dopamine Receptor D2 ( <a href="#">DRD2 Products</a> )

## Target Details

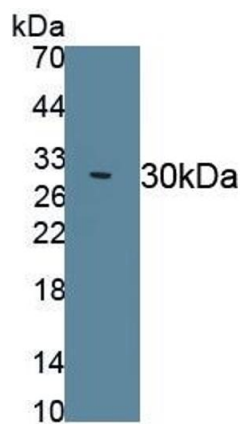
Background:	DR-D2, D2DR, D2R
Pathways:	<a href="#">Positive Regulation of Peptide Hormone Secretion</a> , <a href="#">Negative Regulation of Hormone Secretion</a> , <a href="#">cAMP Metabolic Process</a> , <a href="#">Inositol Metabolic Process</a> , <a href="#">Regulation of G-Protein Coupled Receptor Protein Signaling</a> , <a href="#">Feeding Behaviour</a> , <a href="#">Negative Regulation of Transporter Activity</a> , <a href="#">Regulation of long-term Neuronal Synaptic Plasticity</a>

## Application Details

Application Notes:	Western blotting: 0.5-2 µg/mL 1:500-2000 Immunohistochemistry: 5-20 µg/mL 1:50-200 Immunocytochemistry: 5-20 µg/mL 1:50-200 Optimal working dilutions must be determined by end user.
Comment:	The thermal stability is described by the loss rate. The loss rate was determined by accelerated thermal degradation test, that is, incubate the protein at 37°C for 48h, and no obvious degradation and precipitation were observed. The loss rate is less than 5% within the expiration date under appropriate storage condition.
Restrictions:	For Research Use only

## Handling

Format:	Liquid
Buffer:	PBS, pH 7.4, containing 0.02 % Sodium azide, 50 % glycerol.
Preservative:	Sodium azide
Precaution of Use:	This product contains Sodium azide: a POISONOUS AND HAZARDOUS SUBSTANCE which should be handled by trained staff only.
Storage:	4 °C,-20 °C
Storage Comment:	Store at 4°C for frequent use. Stored at -20°C in a manual defrost freezer for two year without detectable loss of activity. Avoid repeated freeze-thaw cycles.
Expiry Date:	24 months



Western Blotting

**Image 1.** Detection of Recombinant DRD2, Canine using Polyclonal Antibody to Dopamine Receptor D2 (DRD2)