

Datasheet for ABIN7432415
anti-MIF antibody (AA 3-111)

8 Images

[Go to Product page](#)

Overview

| | |
|----------------------|--|
| Quantity: | 100 µL |
| Target: | MIF |
| Binding Specificity: | AA 3-111 |
| Reactivity: | Human |
| Host: | Rabbit |
| Clonality: | Polyclonal |
| Conjugate: | This MIF antibody is un-conjugated |
| Application: | Western Blotting (WB), Immunohistochemistry (IHC), Immunoprecipitation (IP), Immunocytochemistry (ICC) |

Product Details

| | |
|-------------------|--|
| Purpose: | Polyclonal Antibody to Macrophage Migration Inhibitory Factor (MIF) |
| Immunogen: | Recombinant Macrophage Migration Inhibitory Factor (MIF) corresponding to Met3~Asn111 with N-terminal His Tag |
| Isotype: | IgG |
| Specificity: | The antibody is a rabbit polyclonal antibody raised against MIF. It has been selected for its ability to recognize MIF in immunohistochemical staining and western blotting. |
| Cross-Reactivity: | Mouse, Rat |
| Purification: | Antigen-specific affinity chromatography followed by Protein A affinity chromatography |

Target Details

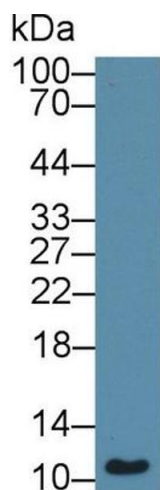
| | |
|-------------------|--|
| Target: | MIF |
| Alternative Name: | Macrophage Migration Inhibitory Factor (MIF Products) |
| Background: | GIF, GLIF, MMIF, Glycosylation-Inhibiting Factor, L-dopachrome isomerase, L-dopachrome tautomerase, Phenylpyruvate tautomerase |
| Pathways: | Regulation of Systemic Arterial Blood Pressure by Hormones , Positive Regulation of Immune Effector Process , Production of Molecular Mediator of Immune Response , Regulation of Carbohydrate Metabolic Process , Feeding Behaviour , Smooth Muscle Cell Migration , Negative Regulation of intrinsic apoptotic Signaling |

Application Details

| | |
|--------------------|---|
| Application Notes: | Western blotting: 0.5-2 µg/mL Immunohistochemistry: 5-20 µg/mL Immunocytochemistry: 5-20 µg/mL Optimal working dilutions must be determined by end user. |
| Comment: | The thermal stability is described by the loss rate. The loss rate was determined by accelerated thermal degradation test, that is, incubate the protein at 37°C for 48h, and no obvious degradation and precipitation were observed. The loss rate is less than 5% within the expiration date under appropriate storage condition. |
| Restrictions: | For Research Use only |

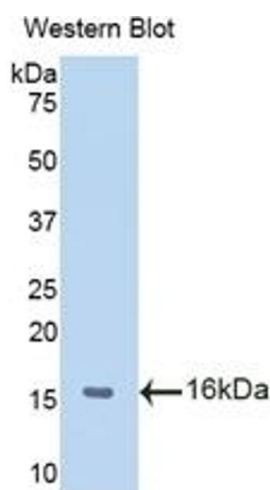
Handling

| | |
|--------------------|---|
| Format: | Liquid |
| Buffer: | 0.01M PBS, pH 7.4, containing 0.05 % Proclin-300, 50 % glycerol. |
| Preservative: | ProClin |
| Precaution of Use: | This product contains ProClin: a POISONOUS AND HAZARDOUS SUBSTANCE which should be handled by trained staff only. |
| Storage: | 4 °C, -20 °C |
| Storage Comment: | Store at 4°C for frequent use. Stored at -20°C in a manual defrost freezer for two year without detectable loss of activity. Avoid repeated freeze-thaw cycles. |
| Expiry Date: | 24 months |



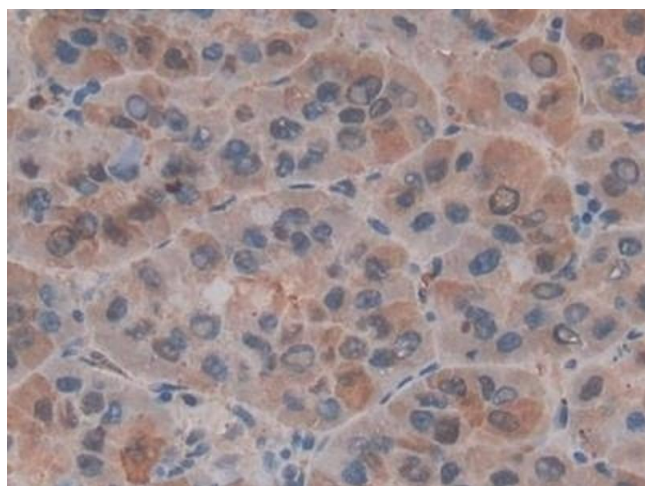
Western Blotting

Image 1. Detection of MIF in Human Hela cell lysate using Polyclonal Antibody to Macrophage Migration Inhibitory Factor (MIF)



Western Blotting

Image 2. Detection of Recombinant MIF, Human using Polyclonal Antibody to Macrophage Migration Inhibitory Factor (MIF)



Immunohistochemistry

Image 3. Detection of MIF in Human Liver cancer Tissue using Polyclonal Antibody to Macrophage Migration Inhibitory Factor (MIF)

Please check the [product details page](#) for more images. Overall 8 images are available for ABIN7432415.