

Datasheet for ABIN7432448
anti-ATP1B3 antibody (AA 61-277)[Go to Product page](#)

3 Images

Overview

Quantity:	100 µL
Target:	ATP1B3
Binding Specificity:	AA 61-277
Reactivity:	Mouse
Host:	Rabbit
Clonality:	Polyclonal
Application:	Western Blotting (WB), Immunohistochemistry (IHC), Immunoprecipitation (IP), Immunocytochemistry (ICC)

Product Details

Purpose:	Polyclonal Antibody to Sodium/potassium Transporting ATPase Subunit Beta-3 (ATP1b3)
Immunogen:	Recombinant Sodium/potassium Transporting ATPase Subunit Beta-3 (ATP1b3) corresponding to Met61~Arg277 (Accession # P97370)
Isotype:	IgG
Specificity:	The antibody is a rabbit polyclonal antibody raised against ATP1b3. It has been selected for its ability to recognize ATP1b3 in immunohistochemical staining and western blotting.
Purification:	Antigen-specific affinity chromatography followed by Protein A affinity chromatography

Target Details

Target:	ATP1B3
Alternative Name:	Sodium/potassium Transporting ATPase Subunit Beta-3 (ATP1B3 Products)

Target Details

Background: CD298, ATP1-B3, ATPB-3, ATPase, Na⁺/K⁺ Transporting Beta 3 Polypeptide

Pathways: [Thyroid Hormone Synthesis](#)

Application Details

Application Notes: Western blotting: 0.5-3 µg/mL
Immunohistochemistry: 5-30 µg/mL
Immunocytochemistry: 5-30 µg/mL
Optimal working dilutions must be determined by end user.

Comment: The thermal stability is described by the loss rate. The loss rate was determined by accelerated thermal degradation test, that is, incubate the protein at 37°C for 48h, and no obvious degradation and precipitation were observed. The loss rate is less than 5% within the expiration date under appropriate storage condition.

Restrictions: For Research Use only

Handling

Format: Liquid

Buffer: 0.01M PBS, pH 7.4, containing 0.05 % Proclin-300, 50 % glycerol.

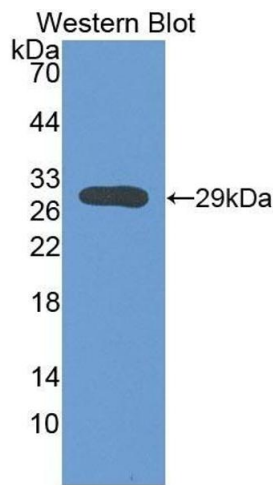
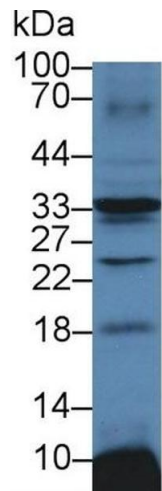
Preservative: ProClin

Precaution of Use: This product contains ProClin: a POISONOUS AND HAZARDOUS SUBSTANCE which should be handled by trained staff only.

Storage: 4 °C, -20 °C

Storage Comment: Store at 4°C for frequent use. Stored at -20°C in a manual defrost freezer for two year without detectable loss of activity. Avoid repeated freeze-thaw cycles.

Expiry Date: 24 months

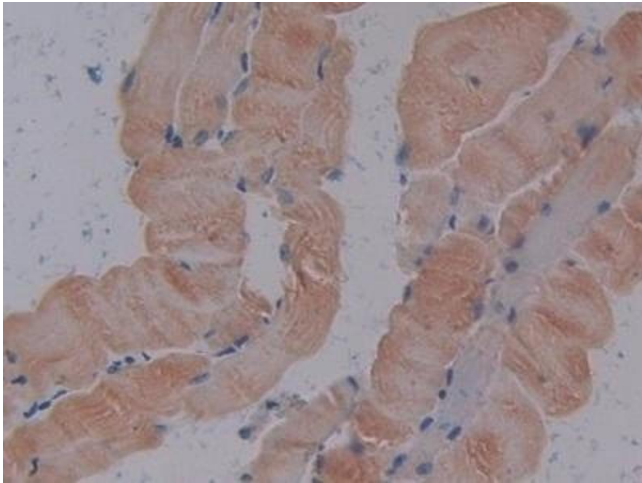


Western Blotting

Image 1. Detection of ATP1b3 in Mouse Heart lysate using Polyclonal Antibody to Sodium/potassium Transporting ATPase Subunit Beta-3 (ATP1b3)

Western Blotting

Image 2. Detection of Recombinant ATP1b3, Mouse using Polyclonal Antibody to Sodium/potassium Transporting ATPase Subunit Beta-3 (ATP1b3)



Immunohistochemistry

Image 3. #VALUE!