

Datasheet for ABIN7432547
anti-C4BPB antibody (AA 18-252)

2 Images

[Go to Product page](#)

Overview

| | |
|----------------------|--|
| Quantity: | 100 µL |
| Target: | C4BPB |
| Binding Specificity: | AA 18-252 |
| Reactivity: | Human |
| Host: | Rabbit |
| Clonality: | Polyclonal |
| Conjugate: | This C4BPB antibody is un-conjugated |
| Application: | Western Blotting (WB), Immunohistochemistry (IHC), Immunoprecipitation (IP), Immunocytochemistry (ICC) |

Product Details

| | |
|-------------------|--|
| Purpose: | Polyclonal Antibody to C4 Binding Protein Beta (C4BPb) |
| Immunogen: | Recombinant C4 Binding Protein Beta (C4BPb) corresponding to Ser18~Leu252 with N-terminal His Tag |
| Isotype: | IgG |
| Specificity: | The antibody is a rabbit polyclonal antibody raised against C4BPb. It has been selected for its ability to recognize C4BPb in immunohistochemical staining and western blotting. |
| Cross-Reactivity: | Mouse, Pig, Rat |
| Purification: | Antigen-specific affinity chromatography followed by Protein A affinity chromatography |

Target Details

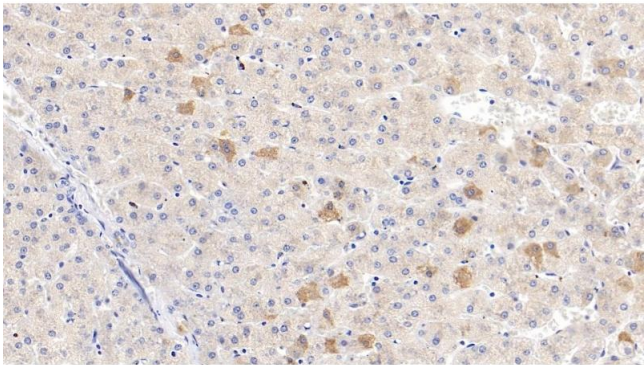
| | |
|-------------------|---|
| Target: | C4BPB |
| Alternative Name: | C4 Binding Protein Beta (C4BPB Products) |
| Background: | C4BP-B, C4-BP, Complement Component 4 Binding Protein, Beta |
| Pathways: | Complement System |

Application Details

| | |
|--------------------|---|
| Application Notes: | Western blotting: 0.5-3 µg/mL Immunohistochemistry: 5-30 µg/mL Immunocytochemistry: 5-30 µg/mL Optimal working dilutions must be determined by end user. |
| Comment: | The thermal stability is described by the loss rate. The loss rate was determined by accelerated thermal degradation test, that is, incubate the protein at 37°C for 48h, and no obvious degradation and precipitation were observed. The loss rate is less than 5% within the expiration date under appropriate storage condition. |
| Restrictions: | For Research Use only |

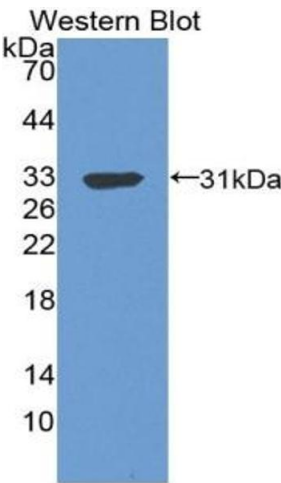
Handling

| | |
|--------------------|---|
| Format: | Liquid |
| Buffer: | PBS, pH 7.4, containing 0.02 % Sodium azide, 50 % glycerol. |
| Preservative: | Sodium azide |
| Precaution of Use: | This product contains Sodium azide: a POISONOUS AND HAZARDOUS SUBSTANCE which should be handled by trained staff only. |
| Storage: | 4 °C,-20 °C |
| Storage Comment: | Store at 4°C for frequent use. Stored at -20°C in a manual defrost freezer for two year without detectable loss of activity. Avoid repeated freeze-thaw cycles. |
| Expiry Date: | 24 months |



Immunohistochemistry

Image 1. Detection of C4BPb in Human Liver Tissue using Polyclonal Antibody to C4 Binding Protein Beta (C4BPb)



Western Blotting

Image 2. Detection of Recombinant C4BPb, Human using Polyclonal Antibody to C4 Binding Protein Beta (C4BPb)