

Datasheet for ABIN7432733
anti-Prolactin antibody (AA 31-229)[Go to Product page](#)

2 Images

Overview

Quantity:	100 µL
Target:	Prolactin (PRL)
Binding Specificity:	AA 31-229
Reactivity:	Pig
Host:	Rabbit
Clonality:	Polyclonal
Conjugate:	This Prolactin antibody is un-conjugated
Application:	Western Blotting (WB), Immunohistochemistry (IHC), Immunoprecipitation (IP), Immunocytochemistry (ICC)

Product Details

Purpose:	Polyclonal Antibody to Prolactin (PRL)
Immunogen:	Recombinant Prolactin (PRL) corresponding to Leu31~Cys229 with N-terminal His Tag
Isotype:	IgG
Specificity:	The antibody is a rabbit polyclonal antibody raised against PRL. It has been selected for its ability to recognize PRL in immunohistochemical staining and western blotting.
Cross-Reactivity:	Horse
Purification:	Antigen-specific affinity chromatography followed by Protein A affinity chromatography

Target Details

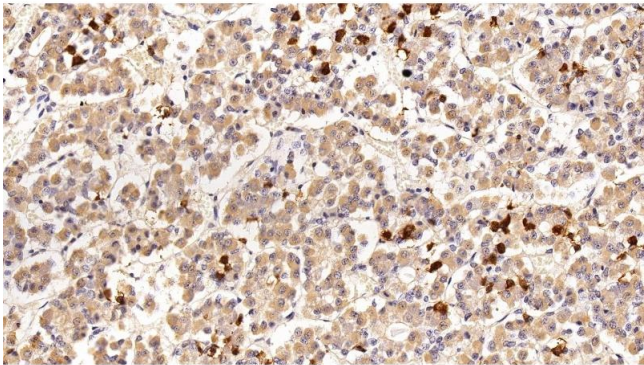
Target:	Prolactin (PRL)
Alternative Name:	Prolactin (PRL Products)
Background:	LTH, Luteotropic Hormone
Pathways:	JAK-STAT Signaling , Peptide Hormone Metabolism , Response to Growth Hormone Stimulus , Protein targeting to Nucleus

Application Details

Application Notes:	Western blotting: 0.5-2 µg/mL 1:450-1800 Immunohistochemistry: 5-20 µg/mL 1:45-180 Immunocytochemistry: 5-20 µg/mL 1:45-180 Optimal working dilutions must be determined by end user.
Comment:	The thermal stability is described by the loss rate. The loss rate was determined by accelerated thermal degradation test, that is, incubate the protein at 37°C for 48h, and no obvious degradation and precipitation were observed. The loss rate is less than 5% within the expiration date under appropriate storage condition.
Restrictions:	For Research Use only

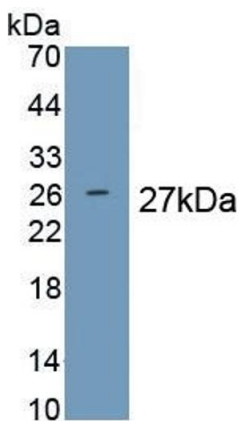
Handling

Format:	Liquid
Buffer:	PBS, pH 7.4, containing 0.02 % Sodium azide, 50 % glycerol.
Preservative:	Sodium azide
Precaution of Use:	This product contains Sodium azide: a POISONOUS AND HAZARDOUS SUBSTANCE which should be handled by trained staff only.
Storage:	4 °C,-20 °C
Storage Comment:	Store at 4°C for frequent use. Stored at -20°C in a manual defrost freezer for two year without detectable loss of activity. Avoid repeated freeze-thaw cycles.
Expiry Date:	24 months



Immunohistochemistry

Image 1. Detection of PRL in Porcine Pituitary Tissue using Polyclonal Antibody to Prolactin (PRL)



Western Blotting

Image 2. Detection of Recombinant PRL, Porcine using Polyclonal Antibody to Prolactin (PRL)