

Datasheet for ABIN7432760
anti-SCGB1A1 antibody (AA 23-91)[Go to Product page](#)

4 Images

Overview

Quantity:	100 µL
Target:	SCGB1A1
Binding Specificity:	AA 23-91
Reactivity:	Human
Host:	Rabbit
Clonality:	Polyclonal
Conjugate:	This SCGB1A1 antibody is un-conjugated
Application:	Western Blotting (WB), Immunohistochemistry (IHC), Immunoprecipitation (IP), Immunocytochemistry (ICC)

Product Details

Purpose:	Polyclonal Antibody to Clara Cell Protein 16 (CC16)
Immunogen:	Recombinant Clara Cell Protein 16 (CC16) corresponding to Ile23~Asn91 with N-terminal His Tag
Isotype:	IgG
Specificity:	The antibody is a rabbit polyclonal antibody raised against CC16. It has been selected for its ability to recognize CC16 in immunohistochemical staining and western blotting.
Purification:	Antigen-specific affinity chromatography followed by Protein A affinity chromatography

Target Details

Target:	SCGB1A1
---------	---------

Target Details

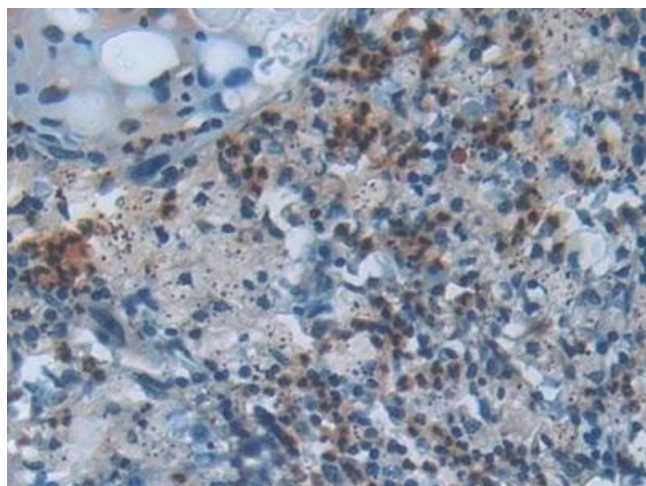
Alternative Name:	Clara Cell Protein 16 (SCGB1A1 Products)
Background:	SCGB1A1, CC10, CCSP, UGB, UG, Uteroglobin, Uteroglobin, Urinary Protein 1, Clara Cell Secretory Protein, Secretoglobin Family 1A Member 1, Clara-Cell Specific 10-kD Protein

Application Details

Application Notes:	Western blotting: 0.5-2 µg/mL Immunocytochemistry in formalin fixed cells: 5-20 µg/mL Immunohistochemistry in formalin fixed frozen section: 5-20 µg/mL Immunohistochemistry in paraffin section: 5-20 µg/mL Enzyme-linked Immunosorbent Assay: 0.05-2 µg/mL Optimal working dilutions must be determined by end user.
Comment:	The thermal stability is described by the loss rate. The loss rate was determined by accelerated thermal degradation test, that is, incubate the protein at 37°C for 48h, and no obvious degradation and precipitation were observed. The loss rate is less than 5% within the expiration date under appropriate storage condition.
Restrictions:	For Research Use only

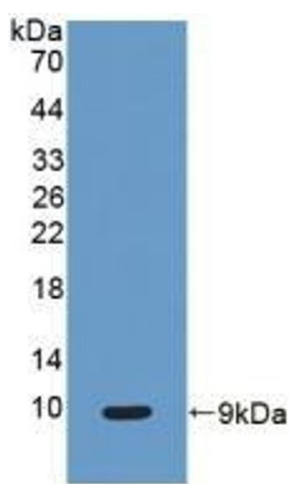
Handling

Format:	Liquid
Buffer:	0.01M PBS, pH 7.4, containing 0.05 % Proclin-300, 50 % glycerol.
Preservative:	ProClin
Precaution of Use:	This product contains ProClin: a POISONOUS AND HAZARDOUS SUBSTANCE which should be handled by trained staff only.
Storage:	4 °C,-20 °C
Storage Comment:	Store at 4°C for frequent use. Stored at -20°C in a manual defrost freezer for two year without detectable loss of activity. Avoid repeated freeze-thaw cycles.
Expiry Date:	24 months



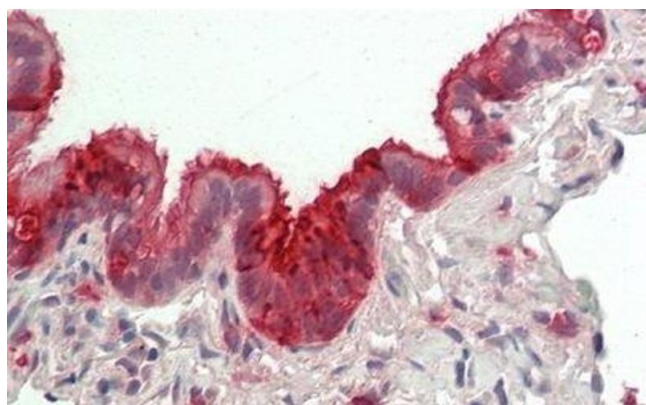
Immunohistochemistry

Image 1. Detection of CC16 in Human Lung cancer Tissue using Polyclonal Antibody to Clara Cell Protein 16 (CC16)



Western Blotting

Image 2. Detection of Recombinant CC16, Human using Polyclonal Antibody to Clara Cell Protein 16 (CC16)



Immunohistochemistry

Image 3. Detection of CC16 in Human Lung Tissue using Polyclonal Antibody to Clara Cell Protein 16 (CC16)

Please check the [product details page](#) for more images. Overall 4 images are available for ABIN7432760.