

Datasheet for ABIN7432763
anti-SCGB1A1 antibody (AA 21-96)[Go to Product page](#)

2 Images

Overview

| | |
|----------------------|--------------------------------------------------------------------------------------------------------|
| Quantity: | 100 µL |
| Target: | SCGB1A1 |
| Binding Specificity: | AA 21-96 |
| Reactivity: | Mouse |
| Host: | Rabbit |
| Clonality: | Polyclonal |
| Conjugate: | This SCGB1A1 antibody is un-conjugated |
| Application: | Western Blotting (WB), Immunohistochemistry (IHC), Immunoprecipitation (IP), Immunocytochemistry (ICC) |

Product Details

| | |
|-------------------|--------------------------------------------------------------------------------------------------------------------------------------------------------------------------------|
| Purpose: | Polyclonal Antibody to Clara Cell Protein 16 (CC16) |
| Immunogen: | Recombinant Clara Cell Protein 16 (CC16) corresponding to Ser21~Phe96 with N-terminal His Tag |
| Isotype: | IgG |
| Specificity: | The antibody is a rabbit polyclonal antibody raised against CC16. It has been selected for its ability to recognize CC16 in immunohistochemical staining and western blotting. |
| Cross-Reactivity: | Rat |
| Purification: | Antigen-specific affinity chromatography followed by Protein A affinity chromatography |

Target Details

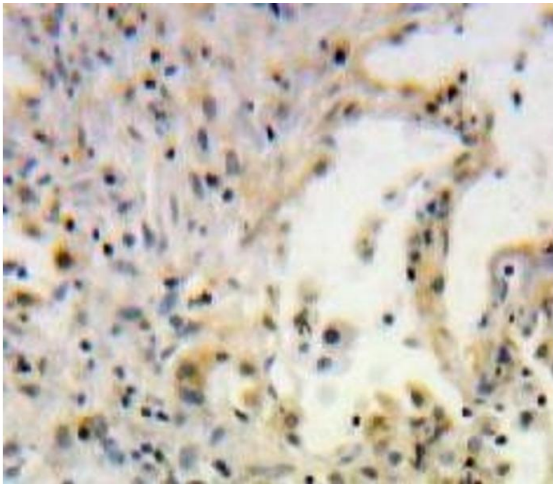
| | |
|-------------------|------------------------------------------------------------------------------------------------------------------------------------------------------------------------------|
| Target: | SCGB1A1 |
| Alternative Name: | Clara Cell Protein 16 (SCGB1A1 Products) |
| Background: | SCGB1A1, CC10, CCSP, UGB, UG, Uteroglobin, Uteroglobin, Urinary Protein 1, Clara Cell Secretory Protein, Secretoglobin Family 1A Member 1, Clara-Cell Specific 10-kD Protein |

Application Details

| | |
|--------------------|-------------------------------------------------------------------------------------------------------------------------------------------------------------------------------------------------------------------------------------------------------------------------------------------------------------------------------------|
| Application Notes: | Western blotting: 0.5-2 µg/mL Immunohistochemistry: 5-20 µg/mL Immunocytochemistry: 5-20 µg/mL Optimal working dilutions must be determined by end user. |
| Comment: | The thermal stability is described by the loss rate. The loss rate was determined by accelerated thermal degradation test, that is, incubate the protein at 37°C for 48h, and no obvious degradation and precipitation were observed. The loss rate is less than 5% within the expiration date under appropriate storage condition. |
| Restrictions: | For Research Use only |

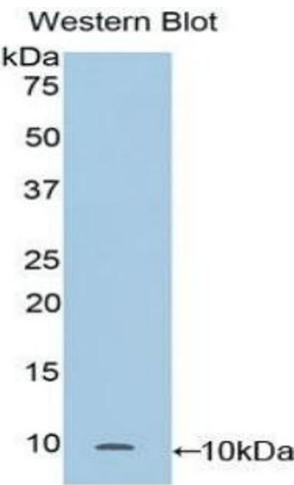
Handling

| | |
|--------------------|-----------------------------------------------------------------------------------------------------------------------------------------------------------------|
| Format: | Liquid |
| Buffer: | 0.01M PBS, pH 7.4, containing 0.05 % Proclin-300, 50 % glycerol. |
| Preservative: | ProClin |
| Precaution of Use: | This product contains ProClin: a POISONOUS AND HAZARDOUS SUBSTANCE which should be handled by trained staff only. |
| Storage: | 4 °C, -20 °C |
| Storage Comment: | Store at 4°C for frequent use. Stored at -20°C in a manual defrost freezer for two year without detectable loss of activity. Avoid repeated freeze-thaw cycles. |
| Expiry Date: | 24 months |



Immunohistochemistry

Image 1. #VALUE!



Western Blotting

Image 2. Detection of Recombinant CC16, Mouse using Polyclonal Antibody to Clara Cell Protein 16 (CC16)