

Datasheet for ABIN7432772
anti-C3 antibody (AA 1000-1326)

6 Images

[Go to Product page](#)

Overview

Quantity:	100 µL
Target:	C3
Binding Specificity:	AA 1000-1326
Reactivity:	Human
Host:	Rabbit
Clonality:	Polyclonal
Conjugate:	This C3 antibody is un-conjugated
Application:	Western Blotting (WB), Immunohistochemistry (IHC), Immunoprecipitation (IP), Immunocytochemistry (ICC)

Product Details

Purpose:	Polyclonal Antibody to Complement Component 3 (C3)
Immunogen:	Recombinant Complement Component 3 (C3) corresponding to Leu1000~Glu1326 with N-terminal His Tag
Isotype:	IgG
Specificity:	The antibody is a rabbit polyclonal antibody raised against C3. It has been selected for its ability to recognize C3 in immunohistochemical staining and western blotting.
Purification:	Antigen-specific affinity chromatography followed by Protein A affinity chromatography

Target Details

Target:	C3
---------	----

Target Details

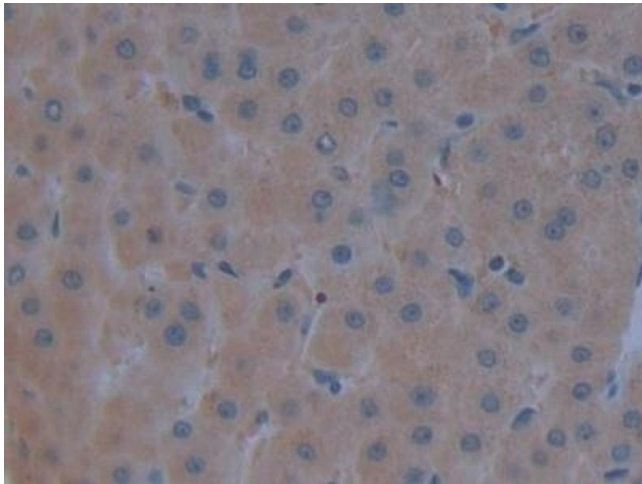
Alternative Name:	Complement Component 3 (C3 Products)
Background:	ASP, CPAMD1, Complement Protein C3, C3 and PZP-like alpha-2-macroglobulin domain-containing protein 1, C3a anaphylatoxin, Acylation stimulating protein
Pathways:	Complement System , Regulation of Leukocyte Mediated Immunity , Positive Regulation of Immune Effector Process , Regulation of G-Protein Coupled Receptor Protein Signaling

Application Details

Application Notes:	Western blotting: 0.1-3 µg/mL Immunohistochemistry: 5-30 µg/mL Immunocytochemistry: 5-30 µg/mL Optimal working dilutions must be determined by end user.
Comment:	The thermal stability is described by the loss rate. The loss rate was determined by accelerated thermal degradation test, that is, incubate the protein at 37°C for 48h, and no obvious degradation and precipitation were observed. The loss rate is less than 5% within the expiration date under appropriate storage condition.
Restrictions:	For Research Use only

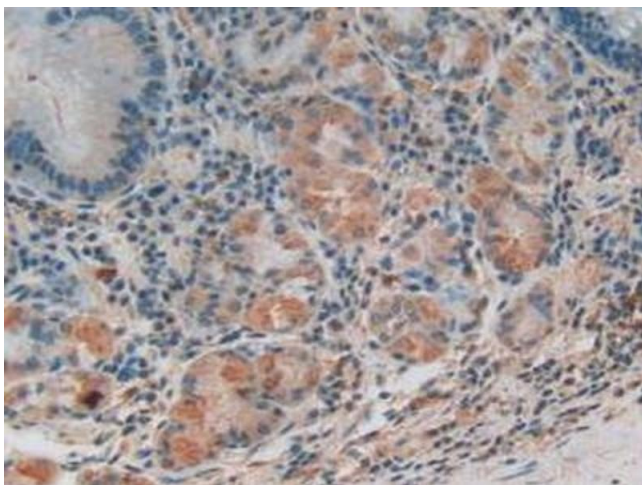
Handling

Format:	Liquid
Buffer:	PBS, pH 7.4, containing 0.02 % Sodium azide, 50 % glycerol.
Preservative:	Sodium azide
Precaution of Use:	This product contains Sodium azide: a POISONOUS AND HAZARDOUS SUBSTANCE which should be handled by trained staff only.
Storage:	4 °C,-20 °C
Storage Comment:	Store at 4°C for frequent use. Stored at -20°C in a manual defrost freezer for two year without detectable loss of activity. Avoid repeated freeze-thaw cycles.
Expiry Date:	24 months



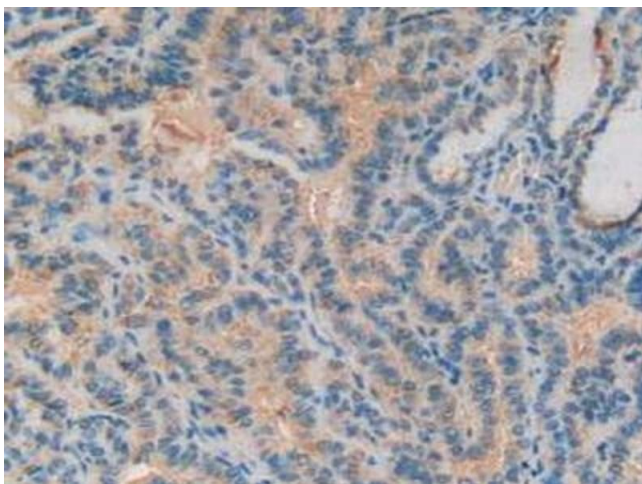
Immunohistochemistry

Image 1. Detection of C3 in Human Liver Tissue using Polyclonal Antibody to Complement Component 3 (C3)



Immunohistochemistry

Image 2. Detection of C3 in Human Stomach Tissue using Polyclonal Antibody to Complement Component 3 (C3)



Immunohistochemistry

Image 3. Detection of C3 in Human Thyroid Cancer Tissue using Polyclonal Antibody to Complement Component 3 (C3)

Please check the [product details page](#) for more images. Overall 6 images are available for ABIN7432772.